

A. About Panduit

Wyr-Grid® Splice Connectors

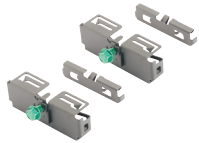
- Integral bonding screw creates a mechanical electrical bond between cable tray pathway sections
- Standard finishes are black powder coat and electro zinc plated
- Sold in pairs

B. Copper Systems



WG SPL 1218 BL

C. Fiber Systems



WG SPL 2430 BL

D. Faceplates, Outlet Frames & Surface Mount Boxes



WG INT SPL BL

E. Keystone Cabling Systems

F. Zone Cabling



WG SPL BL

G. Cable Routing Systems



WG SPL 2430 BL

H. Surface Raceway



WG EX SPL BL

J. Cabinets, Racks & Cable Management Systems

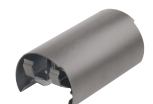


K. Power Management

L. Grounding & Bonding

Wyr-Grid® Waterfalls

- Offered in two different configurations that attach to all pathway sections 8" (203mm), 18" (457mm), 24" (610mm) and 30" (762mm)
- Standard finishes are black powder coat and electro zinc plated



WG BTM W FBL

M. Identification Products

N. Cable Management Accessories



WG SW F4 BL

O. Part Number Index

Part Number	Part Description	Std. Pkg. Qty.	Std. Ctn. Qty.
WG SPL 1218 BL	Straight splice connector quickly joins two 12" (305mm) or 18" (457mm) wide Wyr-Grid® Pathways together. Package contains 2 components needed to join two pathway sections.	1	10
WG SPL 2430 BL	Straight splice connector quickly joins two 24" (610mm) or 30" (762mm) wide Wyr-Grid® Pathways together. Package contains 4 components needed to join two pathway sections.	1	10
WG INT SPL BL	Intersection splice connector quickly joins Wyr-Grid® Pathways at all intersections. Package contains 2 components needed to create one tee or right angle intersection.	1	10
WG SPL BL	Straight splice connector with clips join two 8" (203mm), 12" (305mm) or 18" (457mm) wide Wyr-Grid® Pathways together. A bonded connection is possible with the black powder coated splice when powder coat finish is properly removed from the pathway surfaces that contact the zinc plated clip on the back side of the splice. Package contains 2 components needed to join two pathway sections.	1	10
WG SPL 2430 BL	Straight splice connector with clips join two 24" (610mm) or 30" (762mm) wide Wyr-Grid® Pathways together. A bonded connection is possible with the black powder coated splice when powder coat finish is properly removed from the pathway surfaces that contact the zinc plated clip on the back side of the splice. Package contains 4 components needed to join two pathway sections.	1	10
WG EX SPL BL	Expansion splice connector joins two 8" (203mm), 12" (305mm), 18" (457mm), 24" (610mm) or 30" (762mm) wide Wyr-Grid® Pathways together in applications where small gaps between horizontal pathways prevent the use of standard WG SPL 1218**, WG SPL 2430**, WG SPL** or WG SPL 2430** Wyr-Grid® Splice Components.	1	10

For electro zinc finish replace BL (Black) with EZ.