

## 4 in. Square Boxes

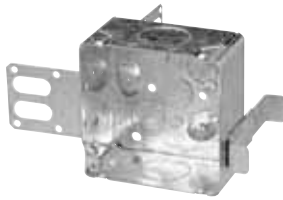
### Conduit Knockouts



**BC52171-HV-KIT**



**BC52171-KSSXHVKIT**



**CI52171-1-SSX-1**

"Wraparound" bracket for 2-1/2 in. and 3-5/8 in. steel studs. With integral support bracket. Present for 2 x 1/2 in. drywall thickness.



**CI52171-1**



**BC52171-K**

Concentric knockouts.



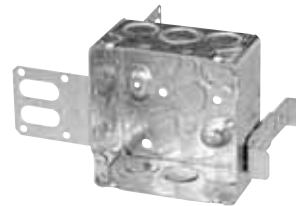
**CI52171-KSB**

Concentric knockouts.



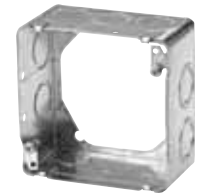
**BC52171-KSSX**

Concentric knockouts. "Wraparound" bracket for 2-1/2 in. and 3-5/8 in. steel studs. With integral support bracket. Present for 1 x 1/2 in. drywall thickness.



**CI52171-KSSX-1**

Concentric knockouts. "Wraparound" bracket for 2-1/2 in. and 3-5/8 in. steel studs. With integral support bracket. Present for 2 x 1/2 in. drywall thickness.



**BC53171-K**

Concentric knockouts.



Cat. No.	Volume (Cu. in.)	Features		Knockouts				
		Bracket	Raised Ground Screw	1/2 in. sides	1/2 in. bottom	3/4 in. sides	3/4 in. bottom	1 in. sides
<b>2-1/8 in. Deep</b>								
<b>BC52171-HV-KIT</b>	33.6	-	yes	6	-	2	-	-
<b>BC52171-KSSXHVKIT</b>	33.6	"SSX"	yes	6	-	2	-	-
<b>CI52171-1</b>	30.0	-	yes	-	4	-	2	4
<b>CI52171-1-SSX-1</b>	21.0	"SSX"	yes	-	4	-	2	2
<b>BC52171-K</b>	30.0	-	yes	10	4	6	2	-
<b>CI52171-KSB</b>	30.0	"SB"	yes	8	4	4	2	-
<b>BC52171-KSSX</b>	30.0	"SSX"	yes	7	4	3	2	-
<b>CI52171-KSSX-1</b>	30.0	"SSX"	yes	7	4	3	2	-
<b>BC53171-K</b>	30.0	-	-	10	-	6	-	-