

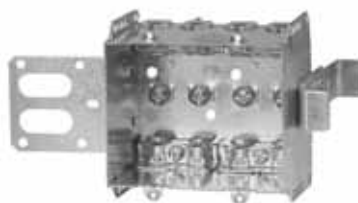
## Device Boxes

### Armoured and Nonmetallic Sheathed Cable Clamps



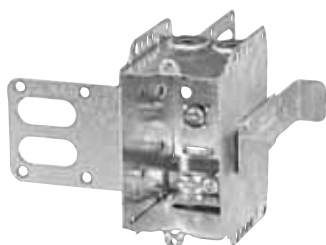
**CI2104-LSSA1X-1**

“Wraparound” bracket for 2-1/2 in. and 3-5/8 in. steel studs. With integral support bracket. Brackets positioned for 2 layers of 1/2 in. drywall.



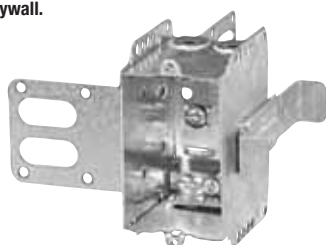
**CI2104-LSSA2X-1**

“Wraparound” bracket for 2-1/2 in. and 3-5/8 in. steel studs. With integral support bracket. Brackets positioned for 2 layers of 1/2 in. drywall.



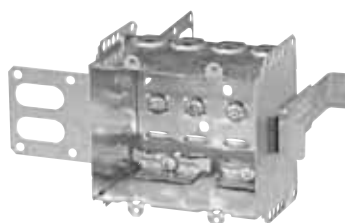
**CI2104-LSSX**

“Wraparound” bracket for 2-1/2 in. and 3-5/8 in. steel studs. With integral support bracket.



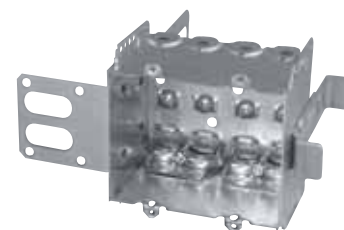
**CI2104-LSS1X-1**

“Wraparound” bracket for 2-1/2 in. and 3-5/8 in. steel studs. With integral support bracket. Brackets positioned for 2 layers of 1/2 in. drywall.



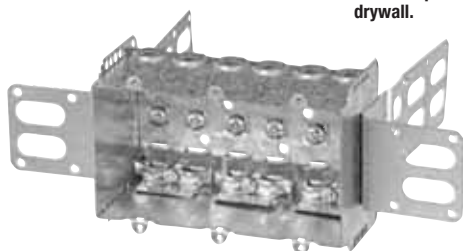
**CI2104-LSS2X-1**

“Wraparound” bracket for 2-1/2 in. and 3-5/8 in. steel studs. With integral support bracket. Brackets positioned for 2 layers of 1/2 in. drywall.



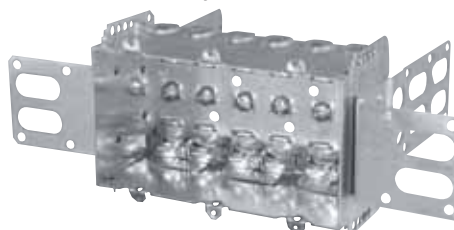
**CI2104-LSS2X**

“Wraparound” bracket for 2-1/2 in. and 3-5/8 in. steel studs. With integral support bracket.



**CI2104-LSS3X-1**

“Wraparound” brackets for 2-1/2 in. and 3-5/8 in. steel studs. With integral support bracket. Brackets positioned for 2 layers of 1/2 in. drywall.



**CI2104-LSS3X**

“Wraparound” brackets for 2-1/2 in. and 3-5/8 in. steel studs. With integral support bracket.



**BC1504-LLE**

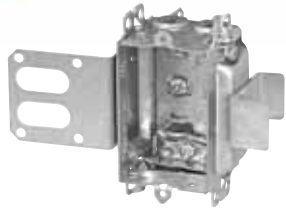
Holding prongs and prepositioned depth tabs on one side.



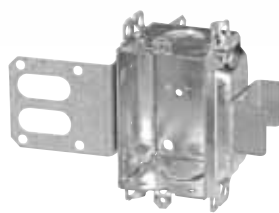
Cat. No.	Width (in.)	Volume (Cu. in.)	Features		Pryouts ends
			Ears	Bracket	
<b>2-1/2 in. Deep — Non-Gangable — 3 in. High</b>					
<b>CI2104-LSSA1X-1</b>	2	12.5	-	“SSX”	4
<b>CI2104-LSSA2X-1</b>	3-3/4	25.0	-	“SSX”	8
<b>CI2104-LSSX</b>	2	12.5	-	“SSX”	4
<b>CI2104-LSS1X-1</b>	2	12.5	-	“SSX”	4
<b>CI2104-LSS2X-1</b>	3-3/4	25.0	-	“SSX”	8
<b>CI2104-LSS2X</b>	3-3/4	25.0	-	“SSX”	8
<b>CI2104-LSS3X-1</b>	5-1/2	37.5	-	“SSX”	12
<b>CI2104-LSS3X</b>	5-1/2	37.5	-	“SSX”	12
<b>2-1/2 in. Deep — Non-Gangable — 3 in. High</b>					
<b>BC1504-LLE</b>	2-1/4	15.0	-	P. Tabs	4

Steel Stud Boxes

Device Boxes



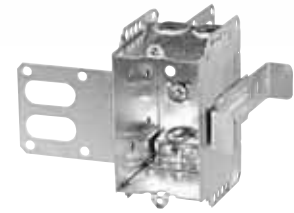
CI3102-LSSAX



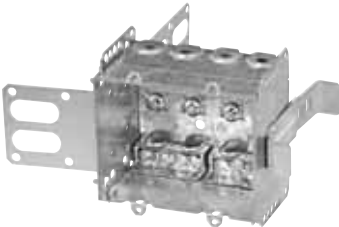
CI3102-SSX



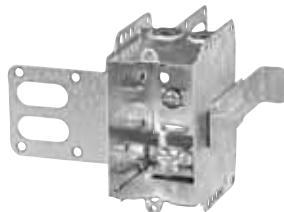
CI1204-3/4-SSX-HV



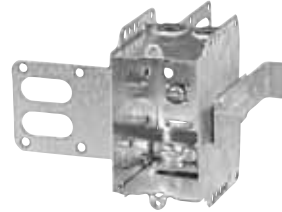
CI2104-LSSAX



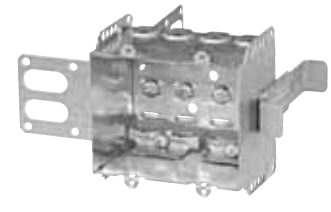
CI2104-LSSA-2X



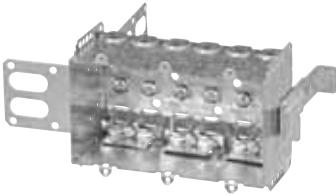
CI2104-LSSX



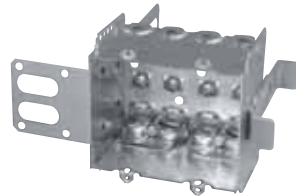
CI2104-LSS1X-1



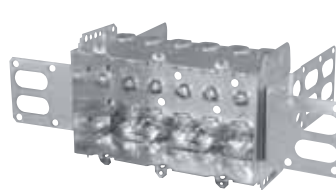
CI2104-LSS2X-1



CI2104-LSS3X-1



CI2104-LSS-2X



CI2104-LSS-3X



CISSX-6



Cat. No.	Volume (Cu. in.)	Width (in.)	Features	Knockouts			Pryouts
			Clamps	1/2 in. ends	1/2 in. bottom	3/4 in. ends	ends
<b>Device Boxes — 2 in. Deep — Gangable — 3 in. High</b>							
CI3102-LSSAX	12.0	2	loomex/BX	-	-	-	4
CI3102-SSX	12.0	2	-	2	-	-	-
<b>Device Boxes — 2-1/2 in. Deep — Pre-Ganged — 3 in. High</b>							
CI1204-3/4-SSX-HV	16.0	2	-	-	-	2	-
CI2104-LSSAX	12.5	2	loomex/BX	-	-	-	4
CI2104-LSSA-2X	25.0	3-3/4	loomex/BX	-	-	-	8
CI2104-LSSA-3X	37.5	5-1/2	loomex/BX	-	-	-	12
CI2104-LSSX	12.5	2	loomex/BX	-	-	-	4
CI2104-LSS1X-1	12.5	2	loomex/BX	-	-	-	4
CI2104-LSS2X-1	25.0	3-3/4	loomex/BX	-	-	-	8
CI2104-LSS3X-1	37.5	5-1/2	loomex/BX	-	-	-	12
CI2104-LSS2X	25.0	3-3/4	loomex/BX	-	-	-	8
CI2104-LSS3X	37.5	5-1/2	loomex/BX	-	-	-	12

Cat. No.	Description
<b>Support Brackets</b>	
CISSX-6	Support bracket extension for 6 in. metal stud