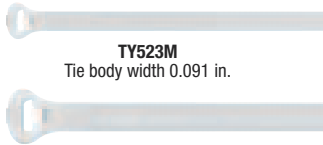
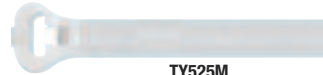


## Cable Ties

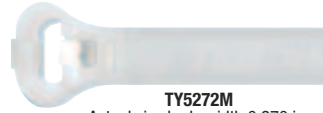


**TY523M**  
Tie body width 0.091 in.

**TY524**  
Tie body width 0.140 in.



**TY525M**  
Tie body width 0.184 in.



**TY5272M**  
Actual size body width 0.270 in.



Std. Cat. No.	Bulk Cat. No.	Body Width (in./mm)	Length (in./mm)	Max. Wire Bundle Dia. (in./mm)	Military Standard Part No.	Tensile Strength (lb./N)	Std. Pkg.	Bulk Pkg.
<b>Ty-Rap® Standard Nylon 6/6 Cable Ties</b>								
<b>TY523M</b>	<b>TY23M</b>	0.09/2.29	3.62/91.95	0.63/16.00	MS3367-4	18/80.07	100	1,000
<b>TY52315M</b>	<b>TYB2315M</b>		7.00/177.80	1.50/38.10	—			
<b>TY5232M</b>	<b>TY232M</b>		8.00/203.20	2.00/50.80	—			
<b>TY5234M</b>	<b>TY234M</b>		14.00/355.60	4.00/101.60	—			
<b>TY524M</b>	<b>TY24M</b>	0.14/3.56	5.50/139.70	1.13/28.70	MS3367-5	40/177.90	100	1,000
<b>TY5242M</b>	<b>TY242M</b>		8.19/208.03	2.00/50.80	—			
<b>TY526M</b>	<b>TY26M</b>		11.10/281.94	3.00/76.20	—	30/133.40		
<b>TY5244M</b>	<b>TY244M</b>		14.50/368.30	4.00/101.60	—			
<b>TY525M</b>	<b>TY25M</b>	0.19/4.83	7.31/185.67	1.75/44.45	MS3367-1	50/222.40	100	1,000
<b>TY5253M</b>	<b>TY253M</b>		11.60/294.64	3.00/76.20	MS3367-7			
<b>TY528M</b>	<b>TY28M</b>		14.20/360.68	4.00/101.60	MS3367-2			
<b>TY5272M*</b>	<b>TY272M*</b>	0.27/6.86	8.75/222.25	2.00/50.80	—	120/533.80	50	500
<b>TY527M*</b>	<b>TY27M</b>		13.40/340.36	3.50/88.90	MS3367-3			
<b>TY5275M</b>	<b>TY275M</b>		18.00/457.20	5.00/127.00	—			
<b>TY5277M</b>	<b>TY277M</b>		24.30/617.22	7.00/177.80	—			
<b>TY529M</b>	<b>TY29M</b>		30.00/762.00	9.00/228.60	MS3367-6			
<b>TY53510M**</b>	—	0.32/8.13	35.00/889.00	10.00/254.00	—	175/778.40	50	—
<b>TY53513M**</b>	—		45.00/1143.00	13.00/330.20	—			

Cable ties made from natural nylon 6/6 are excellent performers in most applications. Nylon 6/6 is recommended for use in temperatures ranging from 185°F to -40°F (85°C to -40°C). CSA Certified. Natural 6/6 Nylon Cable Ties are suitable for use in air handling spaces in accordance with rules 12-010 (3), (4) and (5), and 12-020 of the CEC.

\* Not CSA Certified.

\*\* UL LISTED