

Disconnects and Male Tabs

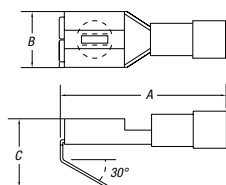
250 Series — Female Disconnects (continued)

7 Non-insulated 90° flag



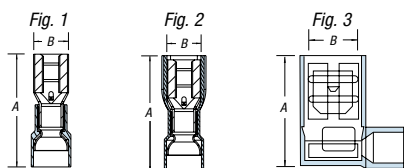
| CAT. NO. | PKG. QTY. | WIRE RANGE | MAX. INS. | TAB SIZE | FIG. | REC. TOOL | DIMENSIONS | |
|----------|-----------|------------|-----------|-------------|------|-----------|------------|-----|
| | | | | | | | A | B |
| A18-250A | 50 | 22-18 | — | .250 x .032 | 3 | ERG4002 | .58 | .61 |
| A252G | 500 | 22-18 | — | .250 x .032 | 3 | | .58 | .61 |
| B14-250A | 50 | 16-14 | — | .250 x .032 | 3 | ERG4002 | .58 | .62 |
| B252G | 500 | 16-14 | — | .250 x .032 | 3 | | .58 | .62 |
| C10-250A | 50 | 12-10 | — | .250 x .032 | 3 | ERG4005 | .64 | .63 |
| C252G | 500 | 12-10 | — | .250 x .032 | 3 | | .64 | .63 |

250 Series — Nylon Piggy Back Disconnects



| CAT. NO. | PKG. QTY. | WIRE RANGE | MAX. INS. | TAB SIZE | REC. TOOL | DIMENSIONS | | |
|------------|-----------|------------|-----------|-------------|-----------|------------|-----|-----|
| | | | | | | A | B | C |
| RA18-250FP | 100 | 22-18 | .136 | .250 x .032 | WT112M | .87 | .30 | .43 |
| RA250P | 1,000 | 22-18 | .136 | .250 x .032 | | .87 | .30 | .43 |
| RB14-250FP | 100 | 16-14 | .163 | .250 x .032 | ERG4001 | .87 | .30 | .43 |
| RB250P | 1,000 | 16-14 | .163 | .250 x .032 | | .87 | .30 | .43 |

187 Series — Female Disconnects



1 Nylon self-insulated



2 Vinyl self-insulated



3 Nylon fully insulated



4 Non-insulated



5 Nylon fully insulated 90° flag



| CAT. NO. | PKG. QTY. | WIRE RANGE | MAX. INS. | TAB SIZE | FIG. | REC. TOOL | DIMENSIONS | | |
|-------------|-----------|------------|-----------|-------------|------|-----------|------------|-----|-----|
| | | | | | | | A | B | |
| RAD18-183 | 100 | 22-18 | .136 | .187 x .032 | 1 | ERG4001 | .83 | .23 | |
| RAD1833 | 1,000 | 22-18 | .136 | .187 x .032 | 1 | | .83 | .23 | |
| RAD18-182 | 100 | 22-18 | .136 | .187 x .020 | 1 | | .83 | .23 | |
| RAD1823 | 1,000 | 22-18 | .136 | .187 x .020 | 1 | | .83 | .23 | |
| RBD14-183 | 100 | 16-14 | .163 | .187 x .032 | 1 | | .83 | .23 | |
| RBD1833 | 1,000 | 16-14 | .163 | .187 x .032 | 1 | | .83 | .23 | |
| RBD14-182 | 100 | 16-14 | .163 | .187 x .020 | 1 | | .83 | .23 | |
| RBD1823 | 1,000 | 16-14 | .163 | .187 x .020 | 1 | | .83 | .23 | |
| 18RAD-183 | 100 | 22-18 | .150 | .187 x .032 | 1 | | ERG4001 | .85 | .23 |
| RAD1837 | 1,000 | 22-18 | .150 | .187 x .032 | 1 | | | .85 | .23 |
| 18RAD-182 | 100 | 22-18 | .150 | .187 x .020 | 1 | | | .85 | .23 |
| RAD1827 | 1,000 | 22-18 | .150 | .187 x .020 | 1 | | | .85 | .23 |
| 14RBD-183 | 100 | 16-14 | .170 | .187 x .032 | 1 | .85 | | .23 | |
| RBD1837 | 1,000 | 16-14 | .170 | .187 x .032 | 1 | .85 | | .23 | |
| 14RBD-182 | 100 | 16-14 | .170 | .187 x .020 | 1 | ERG4001 | .85 | .23 | |
| RBD1827 | 1,000 | 16-14 | .170 | .187 x .020 | 1 | | .85 | .23 | |
| 18RAD-18377 | 100 | 22-18 | .150 | .187 x .032 | 2 | | ERG4001 | .89 | .30 |
| RAD18377 | 1,000 | 22-18 | .150 | .187 x .032 | 2 | | | .89 | .30 |
| 18RAD-18277 | 100 | 22-18 | .150 | .187 x .020 | 2 | | | .89 | .30 |
| RAD18277 | 1,000 | 22-18 | .150 | .187 x .020 | 2 | | | .89 | .30 |
| 14RBD-18377 | 100 | 16-14 | .170 | .187 x .032 | 2 | .89 | | .30 | |
| RBD18377 | 1,000 | 16-14 | .170 | .187 x .032 | 2 | .89 | | .30 | |
| 14RBD-18277 | 100 | 16-14 | .170 | .187 x .020 | 2 | ERG4002 | .89 | .30 | |
| RBD18277 | 1,000 | 16-14 | .170 | .187 x .020 | 2 | | .89 | .30 | |
| AD18-183 | 100 | 22-18 | — | .187 x .032 | 1 | | ERG4002 | .64 | .23 |
| AD183 | 1,000 | 22-18 | — | .187 x .032 | 1 | | | .64 | .23 |
| AD18-182 | 100 | 22-18 | — | .187 x .020 | 1 | | | .64 | .23 |
| AD182 | 1,000 | 22-18 | — | .187 x .020 | 1 | | | .64 | .23 |
| BD14-183 | 100 | 16-14 | — | .187 x .032 | 1 | .64 | | .23 | |
| BD183 | 1,000 | 16-14 | — | .187 x .032 | 1 | .64 | | .23 | |
| BD14-182 | 100 | 16-14 | — | .187 x .020 | 1 | ERG4001 | .64 | .23 | |
| RAD18-187A | 50 | 22-18 | .150 | .187 x .032 | 3 | | .74 | .59 | |
| RAD1877F | 500 | 22-18 | .150 | .187 x .032 | 3 | | .74 | .59 | |
| RAD18-188A | 50 | 22-18 | .150 | .187 x .020 | 3 | | .74 | .59 | |
| RAD1887F | 500 | 22-18 | .150 | .187 x .020 | 3 | | .74 | .59 | |
| RBD14-187A | 50 | 16-14 | .170 | .187 x .032 | 3 | | .74 | .61 | |
| RBD1877F | 500 | 16-14 | .170 | .187 x .032 | 3 | | .74 | .61 | |
| RBD14-188A | 50 | 16-14 | .170 | .187 x .020 | 3 | | .74 | .61 | |
| RBD1887F | 500 | 16-14 | .170 | .187 x .020 | 3 | | .74 | .61 | |

UL Listed E66716