

FS and FD Cast Hub Device Boxes

UNILETS™ for use with Threaded Rigid Conduit and IMC. All Device Boxes have Ridge Top Construction. Furnished with Internal Ground Screw.

NEC/CEC:
Listed for Ordinary Locations

Applications

- Accommodate wiring devices such as switches and receptacles.
- Provide excellent service in areas where boxes are subject to rough usage.
- Serve as pull boxes for conductors.
- Permit access to conductors for maintenance.
- Provide openings for making splices.
- Allow connections for branch conduit runs.
- Blank bodies for special conduit entrance arrangements.

Features

- Corrosion-resistant — ideal for indoor and outdoor installations.
- Weatherproof, raintight and dust-tight when used with cast gasketed covers.
- FS and FD boxes take standard flush wiring devices.
- FD boxes take devices exceeding 41.4 mm (1.63 in) in depth under fastening ears.
- Malleable iron for high tensile strength and ductility — provides greater resistance to impact and shock.
- Both malleable iron and aluminum boxes have ridge top construction for positive cover/gasket/box fit.
- Accurately tapped, tapered threads for tight, rigid joints, ground continuity.
- Complete selection of covers, receptacles, plugs, gaskets and accessories.
- Covers have captive stainless steel screws to speed installation, prevents loss of screws.
- Internal grounding screws standard.
- Available in single, two and three gang and tandem.
- Smooth, rounded integral bushing in each hub protects conductor insulation.

Standard Materials

- Boxes: malleable iron or copperfree (4/10 of 1% max.) aluminum
- Covers: malleable iron, steel, or copperfree (4/10 of 1% max.) aluminum
- Screws: stainless steel
- Gaskets: neoprene

Standard Finishes

- Malleable iron boxes and covers: triple-coat — (1) zinc electroplate, (2) chromate, and (3) epoxy powder coat
- Aluminum boxes and covers: epoxy powder coat
- Steel covers: zinc electroplate

NEC/CEC Certifications and Compliances

- UL Standard: 514A
- UL Listed: E2527
- CSA Standard: C22.2 No. 18.1
- CSA Certified: 001472
- NEMA Standard: FB-1



Illustrated Features



Gasket is designed so that it wraps around ridge top of Appleton™ aluminum or malleable iron device box. Result is a positive seal against moisture.



Gasket construction. Cover tightens on largest perimeter of gasket and fits snugly against portion of gasket that wraps around ridge top of box.




COMMERCIAL AND INDUSTRIAL FITTINGS: CAST DEVICE BOXES

Appleton

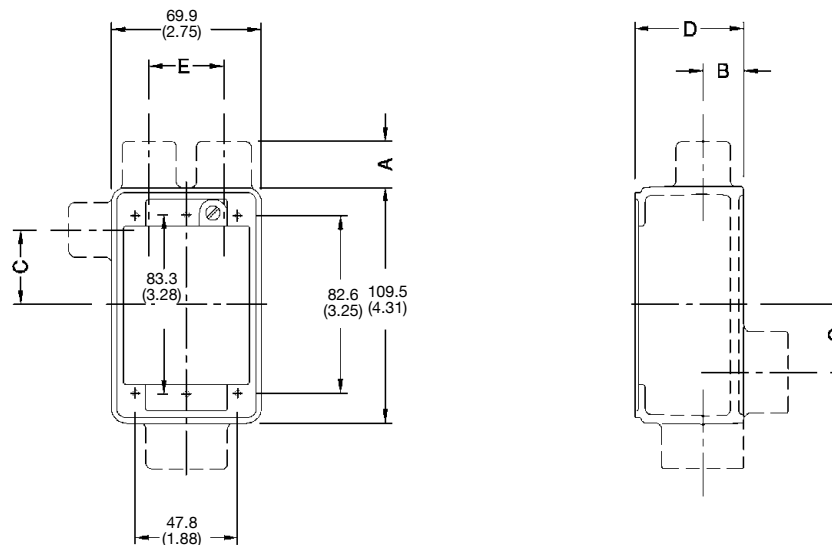
FS and FD Cast Hub Device Boxes

UNILETS™ for use with Threaded Rigid Conduit and IMC. All device boxes have ridge top construction.

CEC:
Listed for Ordinary Locations

| | Size | | Malleable Iron Weight kg (lb) | Catalog Number | | Aluminum Weight kg (lb) | Catalog Number |
|---|------|---------|----------------------------------|----------------|---------|----------------------------|----------------|
|  | 1/2 | Shallow | 0.82 (1.80) | FSS-1 | Shallow | 0.27 (0.60) | FSS-1A |
| | 3/4 | | 0.82 (1.80) | FSS-2 | | 0.27 (0.60) | FSS-2A |
|  | 1/2 | Shallow | 1.12 (2.46) | FST-1 | Shallow | 0.37 (0.82) | FST-1A |
| | 3/4 | | 1.06 (2.33) | FST-2 | | 0.35 (0.78) | FST-2A |
| | 1 | Deep | 1.45 (3.20) | FDT-3 | Deep | 0.49 (1.07) | FDT-3A |
|  | 1/2 | Shallow | 1.25 (2.75) | FSX-1 | Shallow | 0.41 (0.91) | FSX-1A |
| | 3/4 | | 1.06 (2.34) | FSX-2 | | 0.35 (0.78) | FSX-2A |
| | 1/2 | Deep | 1.41 (3.10) | FDX-1 | Deep | 0.47 (1.03) | FDX-1A |
| | 3/4 | | 1.36 (3.00) | FDX-2 | | 0.48 (1.06) | FDX-2A |
| | 1 | | 1.59 (3.50) | FDX-3 | | 0.53 (1.17) | FDX-3A |

Dimensions in Millimeters (Inches)



FS and FD Single Gang Devices

| Hub Size | A | B | C | D | | E |
|----------|------------|------------|------------|------------|------------|------------|
| | | | | FS | FD | |
| 1/2 | 0.3 (0.75) | 0.3 (0.63) | 0.6 (1.38) | 0.9 (2.00) | 1.3 (2.75) | 0.6 (1.38) |
| 3/4 | 0.3 (0.75) | 0.3 (0.75) | 0.6 (1.38) | 0.9 (2.00) | 1.3 (2.75) | 0.6 (1.38) |
| 1 | 0.4 (0.88) | 0.4 (0.88) | 0.8 (1.25) | 0.9 (2.00) | 1.3 (2.75) | 0.6 (1.38) |

COMMERCIAL AND INDUSTRIAL FITTINGS: CAST DEVICE BOXES

Appleton