

Ordering information

Part number example DLL4N/UNV1 S903 TF P

DLL series linear LED, cool white, 4 foot, 1/2" hubs, 80° narrow light pattern, 100-277 VAC driver, polycarbonate lens, through feed hubs, painted

DLL

4

N

/UNV1

S903

TF

P

Series
DLL Pauluhn DLL series linear LED luminaire

Optics
BLANK Wide (120°)
N Narrow (80°)

Finish
BLANK Natural aluminum
P Painted (gray, epoxy)

Through feed
TF Pull wire included in fixture

Length/lumens
4 4 foot length, 7,100 lumens
2 2 foot length, 3,600 lumens

Consult factory/customer service for availability
EM1 EM 100-277VAC; normal mode: 6,700 lumens; battery mode: 14% of full output
EM2 EM 100-277VAC; normal mode: 3,600 lumens; battery mode: 35% of full output
EM3 EM 347-480VAC; normal mode: 6,700 lumens; battery mode: 14% of full output
EM4 EM 347-480VAC; normal mode: 3,600 lumens; battery mode: 35% of full output

Lens
BLANK Glass
S903 Polycarbonate
S891 Diffused glass
S903D Diffused polycarbonate

Voltage
/UNV1 100-277 VAC; 108-250 VDC
/UNV34 347-480 VAC

Accessories (ordered separately)

DP1057MTK	Flush/back mount back plate (compatible with DuraPro)
DP1050MTK	Ceiling/swivel mount (compatible with DuraPro)
DP1053MTK	Ceiling/wall mount offset (compatible with DuraPro)
MP1054MTK KIT	Ceiling mount bracket and adapter kit (compatible with MagnaPro)
DP1052MTK	Offset wall mount (compatible with DuraPro)
PM KIT 1.25	Pole mount kit, 1.25" conduit
PM KIT 1.5	Pole mount kit, 1.50" conduit
PM KIT 2.0	Pole mount kit, 2.00" conduit
PEND HAZ KIT 2	Pendant mount kit for 2 ft. linear
PEND HAZ KIT 4	Pendant mount kit for 4 ft. linear
SS KIT	Safety chain kit
VMVL/UNV1 80W 1A KIT	1 amp driver replacement kit 100-277 VAC for 4 ft. linear
VMVL/UNV34 80W 1A KIT	1 amp driver replacement kit 347-480 VAC for 4 ft. linear
VMVL/UNV1 80W 0.5A KIT	0.5 amp driver replacement kit 100-277 VAC for 2 ft. linear
VMVL/UNV34 80W 0.5A KIT	0.5 amp driver replacement kit 347-480 VAC for 2 ft. linear

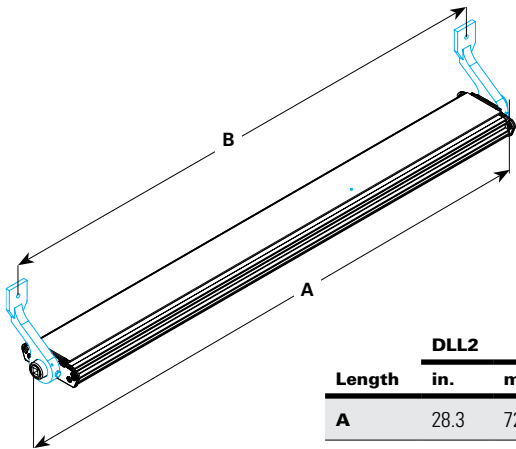
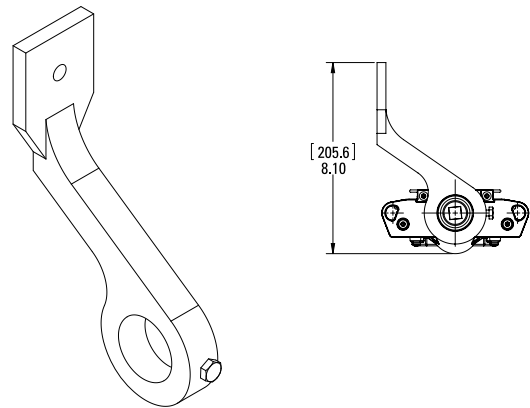
Consult factory/customer service for availability

CABLE KIT 1	TECK armored cable (5 ft.) with TMCX glands
CABLE KIT 2	P Type armored cable (5 ft.) with ADE 6F glands
CABLE KIT 3	Metal clad armored cable (5 ft.) with TMCX glands
EM2 UNV1	Battery back-up 2 ft. LED kit, no cable/gland (loose 3/4" entry hubs)
EM2 UNV34	Battery back-up 2 ft. LED kit, no cable/gland (loose 3/4" entry hubs)
EM4 UNV1	Battery back-up 4 ft. LED kit, no cable/gland (loose 3/4" entry hubs)
EM4 UNV34	Battery back-up 4 ft. LED kit, no cable/gland (loose 3/4" entry hubs)
SRG UNV1	10kV/KA surge protection kit for 100-277 VAC
SRG UNV34	10kV/KA surge protection kit for 347-480 VAC
EM2 UNV1 SRG	Battery back-up 2 ft. LED with integral surge protector
EM2 UNV34 SRG	Battery back-up 2 ft. LED with integral surge protector
EM4 UNV1 SRG	Battery back-up 4 ft. LED with integral surge protector
EM4 UNV34 SRG	Battery back-up 4 ft. LED with integral surge protector

Dimensions & mounting options:

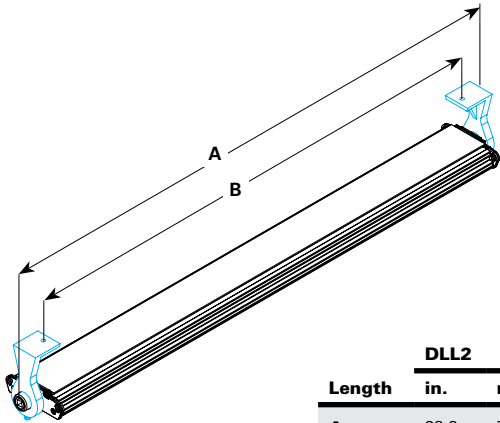
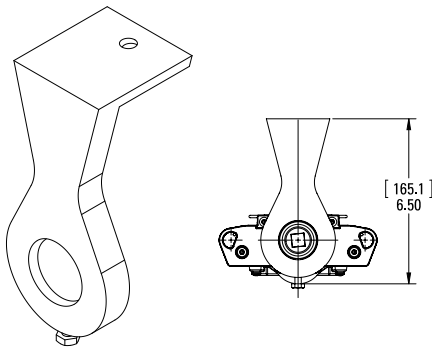
Mounting options

Offset wall DP1052MTK



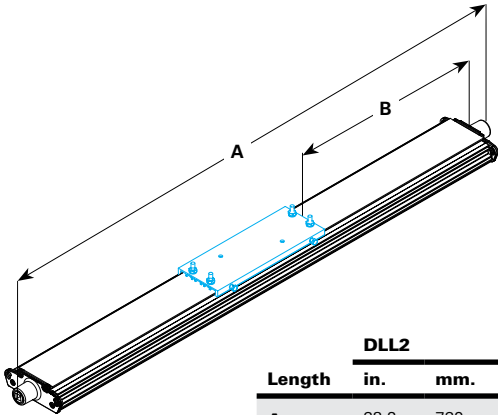
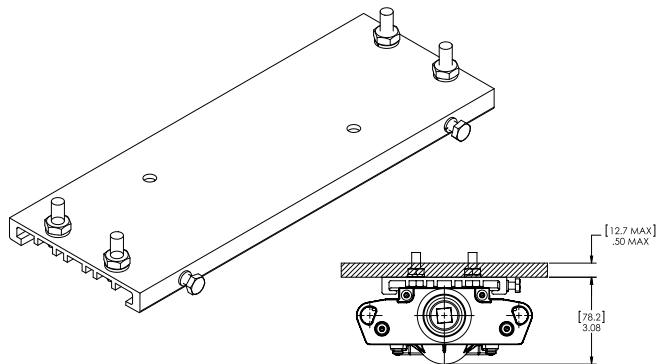
Length	DLL2		DLL4	
	in.	mm.	in.	mm.
A	28.3	720	52.3	1329
B	26.3	669	50.3	1278

Offset ceiling/wall mount DP1053MTK



Length	DLL2		DLL4	
	in.	mm.	in.	mm.
A	28.3	720	52.3	1329
B	26.3	584	47.0	1194

Flush ceiling DP1057MTK



Length	DLL2		DLL4	
	in.	mm.	in.	mm.
A	28.3	720	52.3	1329
B	6.2	157.5	18.2	462