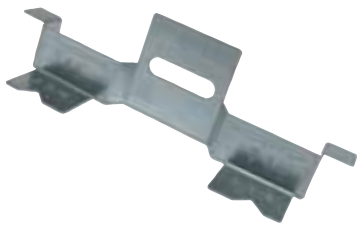
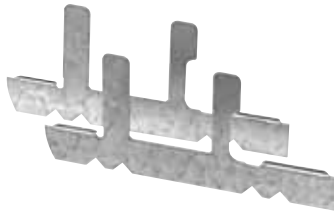


Brackets, Clamps, Partitions



CI820-DX



CI820D



CILRW



CILA CLAMP



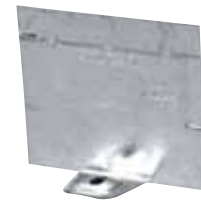
CISSX-6



CI1004-P



CI1104-P



CI2104-P



Cat. No.	Description
Rework Support Brackets	
CI820D	Device box supports. Max. wall thickness 1 in.
CI820-DX	Device box support
CILRW	For installing CI-1104 series of boxes with ears, in closed wall "rework" applications. Complete with an 8-32 x 1-1/2 screw
Universal Cable Clamps (for BX / Loomex)	
CILA CLAMP	Supplied with screws
Support Brackets	
CISSX-6	Support bracket extension for 6 in. metal stud
Device Box Partitions	
CI1004-P	Steel partitions for 2 in., 2-1/2 in. and 3 in. deep outlet boxes
CI1104-P*	Steel partitions for 2-1/2 in. deep gangable boxes. To be used with CI-1104 / CI-3104 Series of boxes
CI2104-P	Steel partitions for 2 in. and 2-1/2 in. deep outlet boxes

*Note: Install partition while ganging boxes

In accordance with C.E.C. 2012 Edition, Rule 12-3030: Conductors that are connected to different power or distribution transformers or other different sources of voltage shall not be installed in the same box, cabinet, or fitting unless a barrier of sheet steel not less than 1.3 mm thick or a flame-retardant nonmetallic insulating material not less than 1.6 mm in thickness is used to divide the space into separate compartments for the conductors of each system.