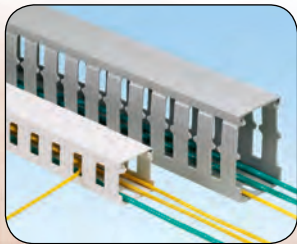
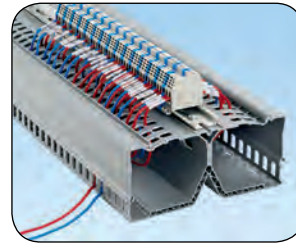
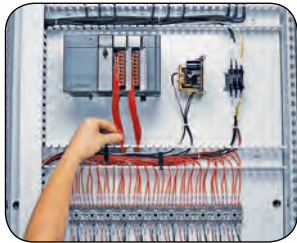
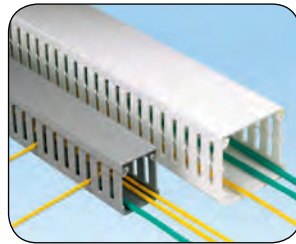
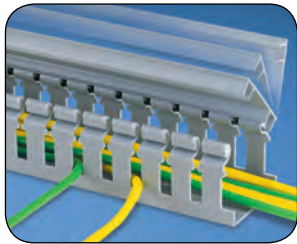
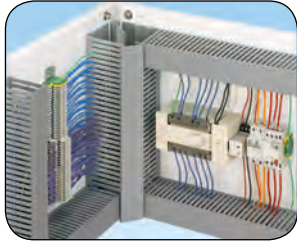


Wiring Duct

From the smallest wall mounted panels to the largest integrated turnkey systems Panduit® Panduct® Wiring Duct is the premium wire management solution for routing and concealing wiring in electrical control panels. Panduct® Wiring Duct provide solutions for the original equipment manufacturing, transportation, contract manufacturing, maintenance and repair and communications markets. Panduct® Wiring Duct is UL recognized and CSA Certified and most carry the CE mark.



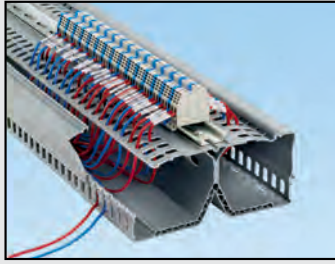
Some of the features and benefits found in Panduct® Wiring Duct include:

- **Smooth corners and edges that will not abrade wiring or irritate hands**
- **Integrated nonskid liners and unique cover designs insure the duct cover will not slide once installed or during vibration**
- **Specially formulated lead-free PVC material meets the NFPA79: 2015 flame retardancy requirements and carries a UL 94V-0 flammability rating**
- **Scorelines for easy removal of duct fingers and sidewalls**
- **Accessories and tools that increase productivity and lower the installed cost**

Panduit continues to develop new Panduct® Wiring Duct solutions to satisfy the challenges facing our customers worldwide. Maximize the utilization of enclosure space with PanelMax™ Corner Wiring Duct, DIN Rail Wiring Duct, and Noise Shield. PanelMax™ Corner Wiring Duct fits into unused space in the corner of enclosures providing up to 20% enclosure space savings*. Integrate component mounting with wire management with PanelMax™ DIN Rail Wiring Duct for up to 30% enclosure space savings. PanelMax™ Noise Shield provides noise mitigation between noisy and sensitive cabling and can reduce air space requirements within the enclosure.

*Versus panel layouts using conventional wiring duct.

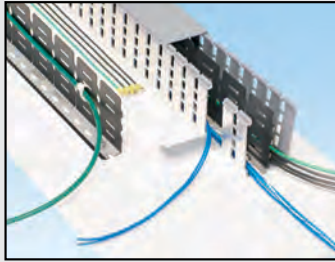
Wiring Duct for Control Panel Applications



PanelMax™ DIN Rail Wiring Duct **1**

Up to 30% space savings vs. conventional duct/rail layouts.

(pages C1.4 – C1.5)



PanelMax™ Shielded Wiring Duct and Noise Shield **2**

Shielded products help mitigate noise up to 20 dB or create up to 6 inches of air space.

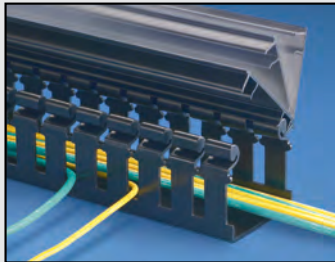
(pages C1.6 – C1.7)



PanelMax™ Corner Wiring Duct **3**

Up to 20% space savings in layouts with side and back panels

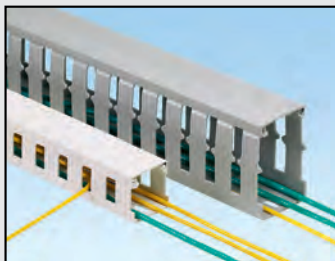
(pages C1.8 – C1.9)



Hinged Cover Wiring Duct **4**

Wide slot, narrow slot, and solid wall wiring duct with hinging cover.

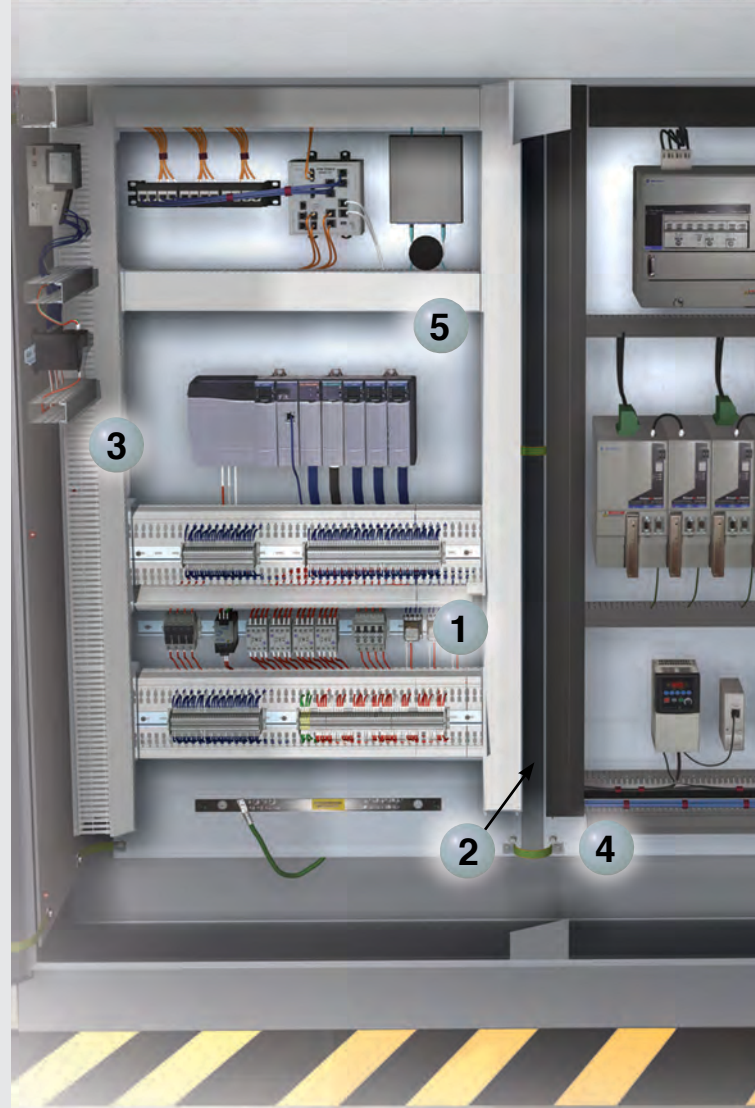
(pages C1.10 – C1.12)

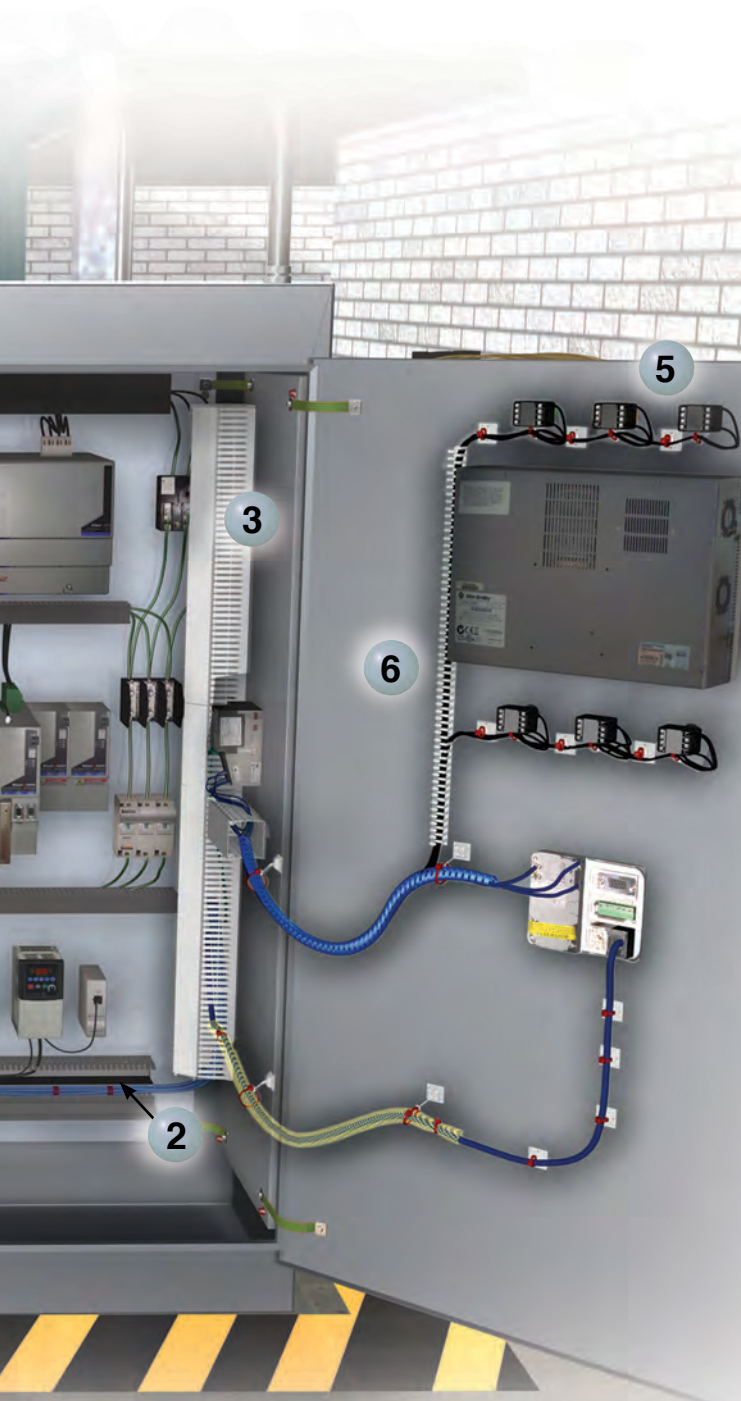


Type NE and NNC Halogen Free Wiring Duct
Up to 203°F (95°C) operating temperature

Type TNC Low-Smoke, Halogen Free Wiring Duct
Up to 221°F (105°C) operating temperature

(pages C1.24 – C1.28)





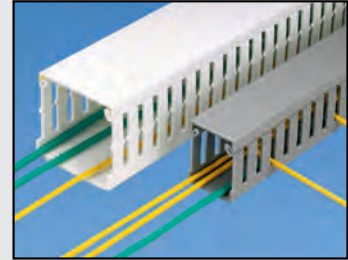
Accessories
(pages C1.29 – C1.36)

5

Type F Narrow Slot Wiring Duct

Narrow slot, narrow finger design fits the spacing of high-density terminal blocks.

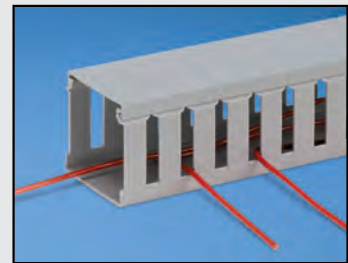
(pages C1.16 – C1.17)



Type G Wide Slot Wiring Duct

Wide slot, wide finger design.

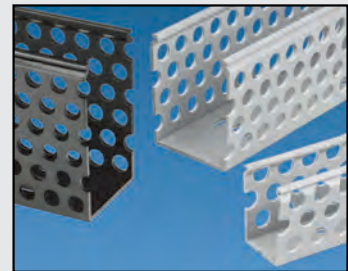
(pages C1.14 – C1.15)



Type D Round Hole Wiring Duct

Multiple rows of holes to retain and support wire of variable heights and positions.

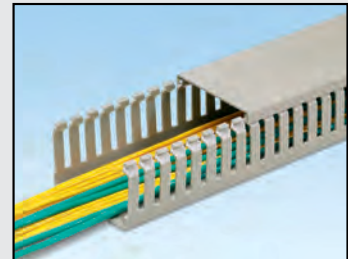
(pages C1.18 – C1.19)



Type MC Metric Wiring Duct

Narrow slot, narrow finger design with DIN 43 659 mounting holes.

(pages C1.20 – C1.21)



6

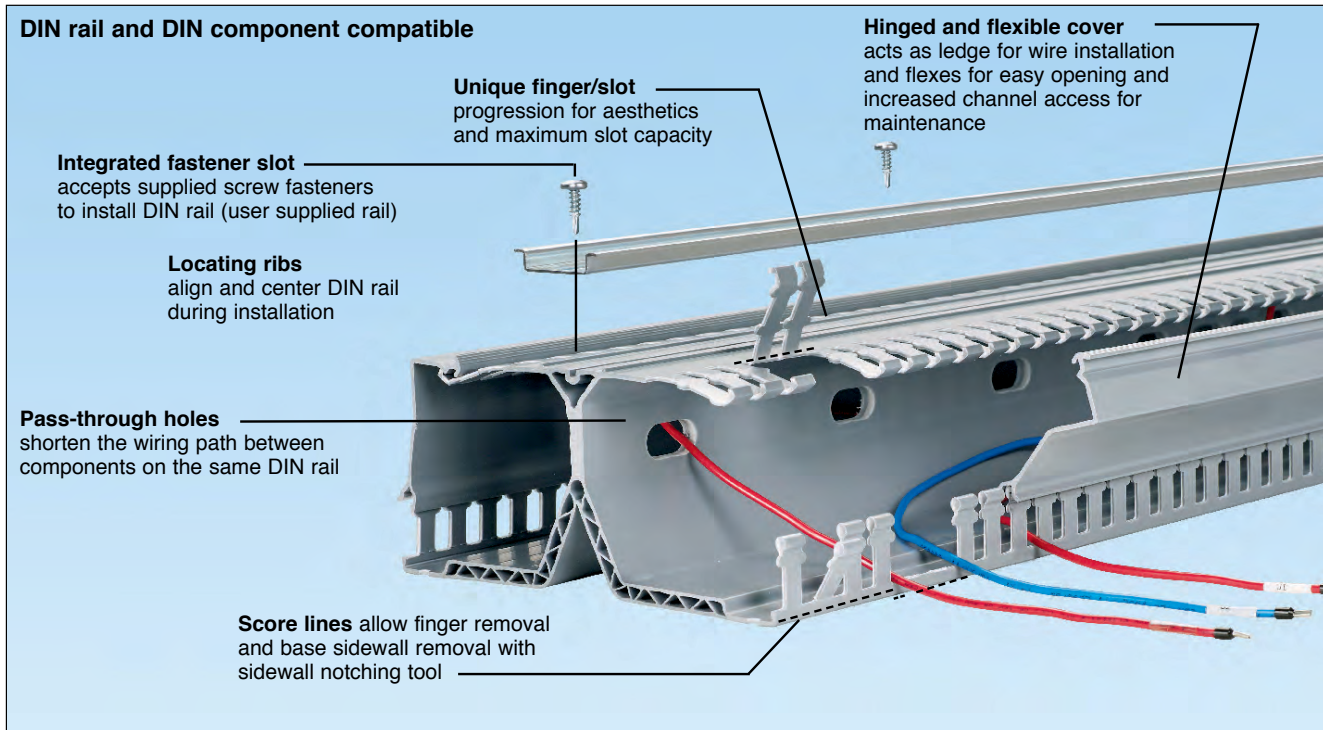
Type FL Flexible Wiring Duct

Solution for door mounted push-button wiring or tight spaces without cover access.

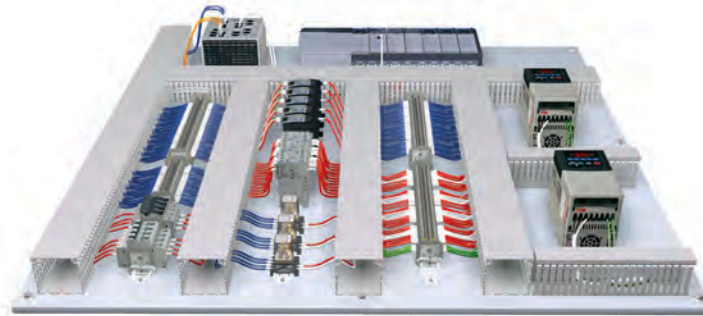
(page C1.30)



Features and Benefits – Panduit® PanelMax™ DIN Rail Wiring Duct



Conventional Wiring Duct Panel Layout:



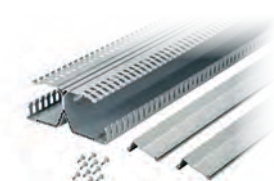
DIN Rail Wiring Duct Panel Layout with 30% Space Savings:



Panduit® PanelMax™ DIN Rail Wiring Duct positions DIN rail and components off the panel directly above an integrated wire management channel for a 30%+ smaller footprint to the panel layout.

Panduct® PanelMax™ DIN Rail Wiring Duct

- Space saving design positions DIN rail and components off the panel directly above an integrated wire management channel for up to a 30% smaller footprint for duct and components; increased design flexibility and component access for easier installation and maintenance
- DIN rail and DIN component compatible with standard 35mm or 15mm rails and many DIN rail mount components for design flexibility
- Integrated DIN rail fastening slot allows the DIN rail to mount directly to product with plastic thread cutting screws for up to 40% faster duct and rail installation and reduced labor costs
- Hinged cover remains attached during maintenance and upgrades preventing lost covers, ensuring panel integrity, safety and aesthetics; L-shaped cover acts as ledge to aid wire installation for ease of use
- Slotted platform (horizontal) manage the wire from channel mounted components, outer sidewall slots (vertical) manage wire from adjacent panel mounted components; unique finger and slot progression for optimal wire management and aesthetics
- Channel pass through slots allows wires to transition internally between channels to ease wire connections to either side of components mounted on the same rail minimizing wire length and reducing material cost
- Optional wire retainer accessory retains cabling with cover opened or removed easing wire installation and future wire additions



DRD



DRDWR



DRDCS

Part Number	Part Description	Std. Pkg. Qty.	Std. Ctn. Qty.
DRD22LG6	2" height PanelMax™ DIN Rail Wiring Duct with dual wiring channels. 6.25" W x 2.12" H (158.7mm x 54.0mm). Base, covers and DIN rail fasteners included.	6 Ft.	6 Ft.
DRD33LG6	3" height PanelMax™ DIN Rail Wiring Duct with dual wiring channels. 7.25" W x 3.14" H (184.1mm x 79.9mm). Base, covers and DIN rail fasteners included.	6 Ft.	6 Ft.
DRD44LG6	4" height PanelMax™ DIN Rail Wiring Duct with dual wiring channels. 8.23" W x 4.12" H (209.0mm x 104.8mm). Base, covers and DIN rail fasteners included.	6 Ft.	6 Ft.
DRDC2LG6	2" replacement cover for PanelMax™ DIN Rail Wiring Duct. 1.58" W x 72" L (40.1mm x 1828.8mm)	6 Ft.	24 Ft.
DRDC3LG6	3" replacement cover for PanelMax™ DIN Rail Wiring Duct. 2.26" W x 72" L (57.4mm x 1828.8mm)	6 Ft.	24 Ft.
DRDC4LG6	4" replacement cover for PanelMax™ DIN Rail Wiring Duct. 2.76" W x 72" L (70.1mm x 1828.8mm)	6 Ft.	24 Ft.
DRDSF-C	Replacement DIN rail fasteners for PanelMax™ DIN Rail Wiring Duct.	100	—
DRDWR2-X	2" wire retainer for PanelMax™ DIN Rail Wiring Duct.	10	100
DRDWR3-X	3" wire retainer for PanelMax™ DIN Rail Wiring Duct.	10	100
DRDWR4-X	4" wire retainer for PanelMax™ DIN Rail Wiring Duct.	10	100
DRDCS2-X	2" corner strip for PanelMax™ DIN Rail Wiring Duct.	10	100
DRDCS3-X	3" corner strip for PanelMax™ DIN Rail Wiring Duct.	10	100
DRDCS4-X	4" corner strip for PanelMax™ DIN Rail Wiring Duct.	10	100

Product sold base and cover together in 6 ft. lengths. Replace LG with WH for white color. Dimensions in parenthesis are metric.