

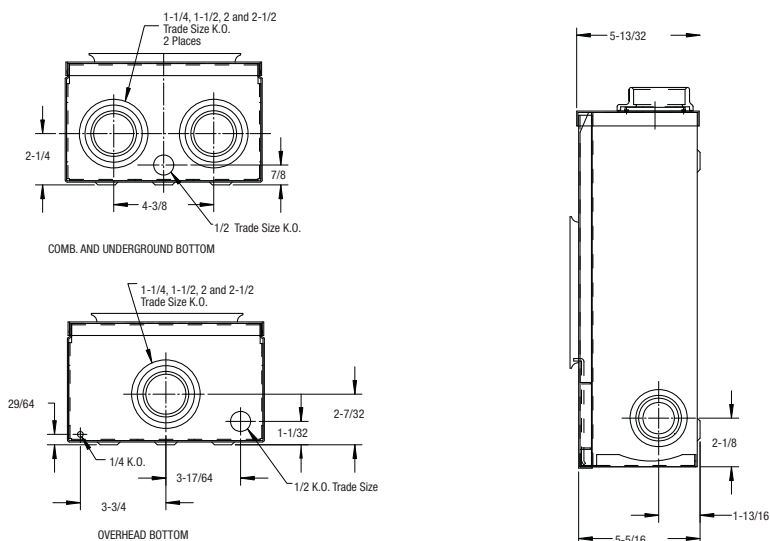
STANDARD ENCLOSURE METER SOCKETS • 200 AMP. 600 VOLTS MAX.



Product Specifications

- Conductor range: 6 AWG-250 kcmil
- Aluminum tunnel type connectors
- Supplied with screw type ring
- Weatherproof Type 3R enclosure
- **Primarily used in:** All provinces

NOTE: Supply from an underground network often requires use of stud type receptacle. Consult your local utility.



Dimensions are in inches

Ordering Information

CATALOGUE NUMBER	DESCRIPTION	DIMENSIONS (inches)			WEIGHT EACH	
		H	W	D	lb	kg
4 JAW						
BQ2-V	Overhead, hub opening	15-5/8	8-47/64	5-13/32	12	5.4
BQ2-1 1/2 V	Overhead, hub opening c/w 1-1/2" hub	15-5/8	8-47/64	5-13/32	12	5.4
BQ2-2V	Overhead, hub opening c/w 2" hub	15-5/8	8-47/64	5-13/32	12	5.4
BQ2-TV	Underground	15-5/8	8-47/64	5-13/32	12	5.4
BQ2-TCV	Combination, overhead-underground	15-5/8	8-47/64	5-13/32	12	5.4
BQ2-22VNH	Overhead, twin hub opening	15-5/8	8-47/64	5-13/32	12	5.4
BQ2-22V	Overhead, twin hub opening c/w 2" hubs	15-5/8	8-47/64	5-13/32	12	5.4
BQ2-2VR	Overhead, hub opening c/w 2" hub for B.C.	15-5/8	8-47/64	5-13/32	12	5.4
FACTORY INSTALLED ACCESSORIES						
Include: -GN	Ground lug on neutral					
-5	5 th jaw standard capacity					
-6	5 th jaw full capacity, 6 o'c position					