

New

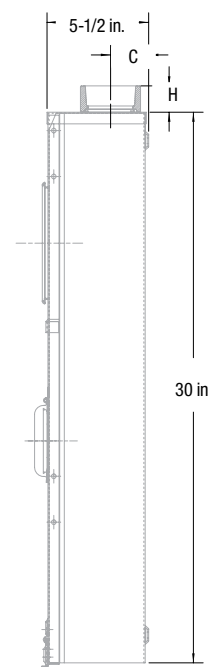
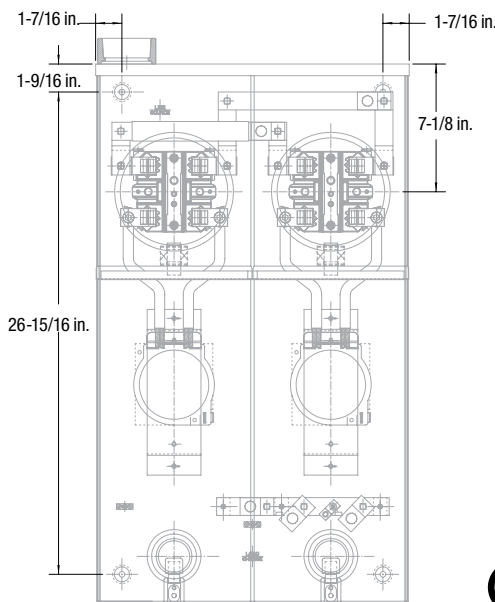
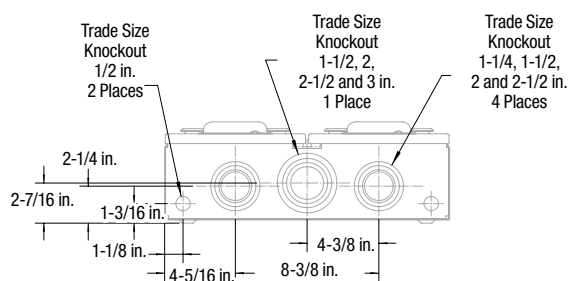
CO22 Series

**200 A (Main Lugs), 200 A per Position, Single Phase 120/240 V;
Multiple Position Combination with or without Breaker**

Product Specifications

- Conductor range: Line: 6 AWG-250 kcmil, Load: 6 AWG-250 kcmil
- Aluminum tunnel type connectors for both load and line sides
- For overhead and underground services
- Factory pre-bussed from main lugs to each position
- Supplied with hub opening closure plate for underground service
- Internal locking system for covers
- Supplied with screw type sealing rings
- Factory installed 2 pole circuit breaker, 10,000 A rms interrupting capacity
- Siemens Type "QJ" breaker
- Weatherproof Type 3R enclosure
- **Primarily used in: All provinces**
Quebec only: As per Hydro-Québec spec
(supplied with 22 kA Siemens breaker)

Note: Consult your Regional Sales Office for right-hand entry option.



Hub Cat. No.	Hub Size	C (in.)	H (in.)
MH10X	1	1-7/16	1-1/8
MH12X	1-1/4	1-5/8	1-1/32
MH15	1-1/2	1-11/16	1-1/32
MH20	2	1-15/16	1-1/32
MH25	2-1/2	2-1/8	1-7/16



Approved for copper or aluminum

Cat. No.	Type	Description	Position	Dimensions (in.)			Weight Each	
				H	W	D	lb.	kg
Left-Hand Entry								
C022	Combination OH/UG*	2 gang, provision for Siemens 2 x (QJ), 200 A 2 pole 10 kA rated circuit breakers	2	30	17-3/4	5-1/2	40	18.14
C022-200		2 gang, c/w Siemens 2 x QJ 200 A 2 pole 10 kA rated circuit breakers						
C022-200HI		2 gang, c/w Siemens 2 x QJH 200 A 2 pole 22 kA rated circuit breakers						
C023		3 gang, provision for Siemens 3 x (QJ), 200 A 2 pole 10 kA rated circuit breakers	3		26-1/2	80	27.21	
C023-200		3 gang, c/w Siemens 3 x QJ 200 A 2 pole 10 kA rated circuit breakers						
C023-200HI		3 gang, c/w Siemens 3 x QJH 200 A 2 pole 22 kA rated circuit breakers						
C024		4 gang, provision for Siemens 4 x (QJ), 200 A 2 pole 10 kA rated circuit breakers	4		35-1/4	80	36.28	
C024-200		4 gang, c/w Siemens 4 x QJ 200 A 2 pole 10 kA rated circuit breakers						
C024-200HI		4 gang, c/w Siemens 4 x QJH 200 A 2 pole 22 kA rated circuit breakers						

Note: Ex. C022-XXX, suffix (XXX) can be replaced by any of the following breaker amperage options: 100, 125 or 150. Consult your Regional Sales Office for price and availability.

*Only allowed for underground use if local utility authority does not require a blank compartment. If blank compartment is required, recommend C022-U.

Accessories



BS087 / BS089 / BS090



CM-BS100



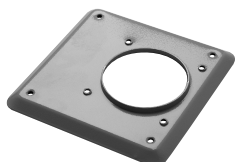
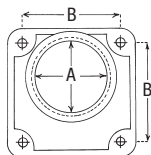
LS500



MH200



MH10X



BS052

Blank Meter Cover Plates

Cat. No.	Description
BS087	Grey ABS
BS089	Plastic "throw-away" cover
BS090	Clear unbreakable polycarbonate

Jumper Bar



Cat. No.	Description
CM-BS100	200 A Max.

Meter Jaw Safety Shroud

Cat. No.	Description
LS500	Red polycarbonate, 100/200 A

Mast Coupler



Cat. No.	Description
MH200	Fits all sockets with regular 2-1/2 in. hub opening

Masts Coupler



Cat. No.	PVC Cat. No.	A Hub Size (in.)	B
MH10X	—	1	For 2-1/2 in. regular hub opening (add hub adapter plate BS052 if used with units having 4 in. hub openings)
MH12X	PH12	1-1/4	
MH15	PH15	1-1/2	
MH20	PH20	2	
MH25	PH25	2-1/2	For 4 in. hub opening
MH30	—	3	
MH35	—	3-1/2	
MH40	—	4	

Supplied with 4 Robertson head screws.

Hub Adapter Plate



Cat. No.	Description
BS052	Permits use of regular size hubs on larger hub openings