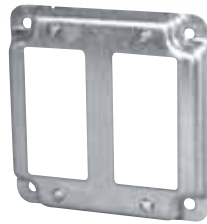


## 4 in. Square Boxes

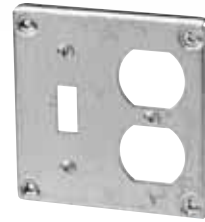
### Covers



BC8368



BC8371



BC8375



BC8376



BC8377



BC8378



BC97002



| Cat. No.  | Description  |
|---|--|
| <b>3/8 in. Raised Surface Covers (4.6 cu. in.)</b>    |  |
| <b>BC8368</b>   | 2 Decora/GFCI  |
| <b>BC8371</b>   | Two duplex receptacles   |
| <b>BC8375</b>   | One toggle switch, one duplex receptacle                             |
| <b>BC8376</b>   | One Decora/GFCI  |
| <b>BC8377</b>   | One toggle switch, one Decora/GFCI                                   |
| <b>BC8378</b>   | One duplex receptacle, one Decora/GFCI                               |
| <b>GFCI Conversion Kits (Stainless Steel / Steel)</b> |  |
| <b>BC97002</b>  | To install GFCI on 4 in. square boxes. Complete with mounting screws |

Complete with device mounting screws

When extra capacity is required, the 8300 Series of 4 in. square covers can be mounted on a 72 Series of 4-11/16 in. square boxes using a CI72-A-52 adaptor. (see page A41)