

Catalogue Number Designation

Technical Specifications

Catalogic

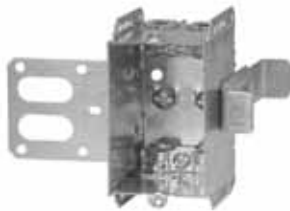
- LN Clamps for nonmetallic sheathed cable or armoured cable. Staked nails.
- LRB Clamps for nonmetallic sheathed cable or armoured cable and pivoting ends for “rework” installation.
- LRE Clamps for nonmetallic sheathed cable or armoured cable. Recessed ears.
- LRW Clamps for nonmetallic sheathed cable or armoured cable and spring mounting device for installation in finished walls.
- LSBA Clamps for armoured cable or nonmetallic sheathed cable and side bracket.
- LSSA1X-1 Clamps for armoured cable or nonmetallic sheathed cable, mounting strap for steel stud installations and integral additional support bracket. Recessed 1 in.
- LSSA-2X Clamps for armoured cable or nonmetallic sheathed cable, mounting strap for steel stud installations and integral additional support bracket. 2 gangs.
- LSSA-3X Clamps for armoured cable or nonmetallic sheathed cable, mounting strap for steel stud installations and integral additional support bracket. 3 gangs.
- LSSAX Clamps for armoured cable or nonmetallic sheathed cable, mounting strap for steel stud installations and integral additional support bracket.
- LSSAX-HV Clamps for nonmetallic sheathed cable or armoured cable, mounting strap for steel stud installations and integral additional support bracket. High voltage.
- LSSAX-1 Clamps for armoured cable or nonmetallic sheathed cable, mounting strap for steel stud installations and integral additional support bracket. Recessed 1 in.
- LSSX Clamps for nonmetallic sheathed cable or armoured cable, mounting strap for steel stud installations and integral additional support bracket.
- LSS2X Clamps for nonmetallic sheathed cable or armoured cable, mounting strap for steel stud installations and integral additional support bracket. 2 gangs.
- LSS3X Clamps for nonmetallic sheathed cable or armoured cable, mounting strap for steel stud installations and integral additional support bracket. 3 gangs.
- LSSX-1 Clamps for nonmetallic sheathed cable or armoured cable, mounting strap for steel stud installations and integral additional support bracket. Recessed 1 in.
- LSS1X-1 Clamps for nonmetallic sheathed cable or armoured cable, mounting strap for steel stud installations and integral additional support bracket.
Recessed 1 in. 1 gang box.
- LSS2X-1 Clamps for nonmetallic sheathed cable or armoured cable, mounting strap for steel stud installations and integral additional support bracket.
Recessed 1 in. 2 gang box.
- LSS3X-1 Clamps for nonmetallic sheathed cable or armoured cable, mounting strap for steel stud installations and integral additional support bracket.
Recessed 1 in. 3 gang box.
- LX Self-locking spring clamps for nonmetallic sheathed cable.
- LV V style bracket.
- P Partition.
- R Utility box extension.
- SB Side bracket.
- SSX Mounting strap for steel stud installations and integral additional support bracket.
- SSX-HV Mounting strap for steel stud installations and integral additional support bracket. (Mounting ears spaced for high voltage devices)
- SSX-1 Mounting strap (offset for 2 x 1/2 in. drywall thicknesses) for steel stud installations and integral additional support bracket.
- VB Vapour barrier.
- 1/2 1/2 in. conduit knockouts.
- 1 1 in. conduit knockouts.

When joined together, they identify a particular box and nothing else.

Therefore, **BC2104-LX** represents a non-gangable device box, 2-1/2 in. deep with self-locking clamps for nonmetallic sheathed cable.

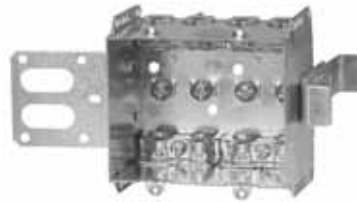
Device Boxes

Armoured and Nonmetallic Sheathed Cable Clamps



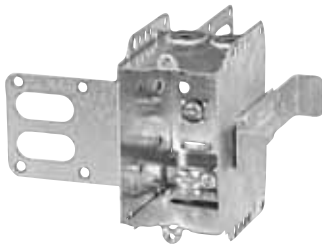
CI2104-LSSA1X-1

“Wraparound” bracket for 2-1/2 in. and 3-5/8 in. steel studs. With integral support bracket. Brackets positioned for 2 layers of 1/2 in. drywall.



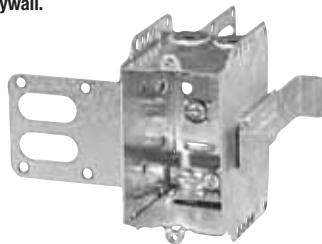
CI2104-LSSA2X-1

“Wraparound” bracket for 2-1/2 in. and 3-5/8 in. steel studs. With integral support bracket. Brackets positioned for 2 layers of 1/2 in. drywall.



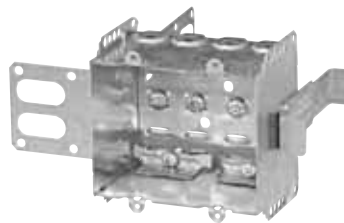
CI2104-LSSX

“Wraparound” bracket for 2-1/2 in. and 3-5/8 in. steel studs. With integral support bracket.



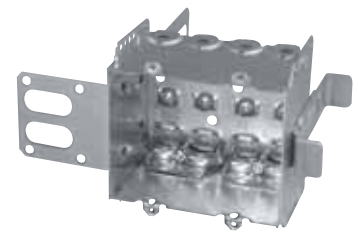
CI2104-LSS1X-1

“Wraparound” bracket for 2-1/2 in. and 3-5/8 in. steel studs. With integral support bracket. Brackets positioned for 2 layers of 1/2 in. drywall.



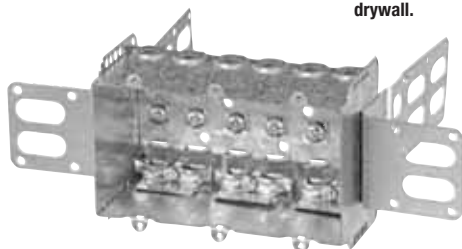
CI2104-LSS2X-1

“Wraparound” bracket for 2-1/2 in. and 3-5/8 in. steel studs. With integral support bracket. Brackets positioned for 2 layers of 1/2 in. drywall.



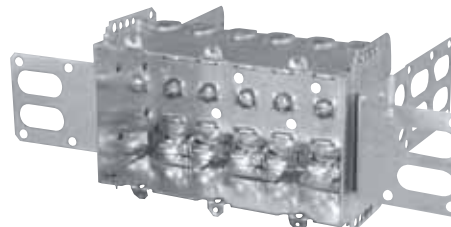
CI2104-LSS2X

“Wraparound” bracket for 2-1/2 in. and 3-5/8 in. steel studs. With integral support bracket.



CI2104-LSS3X-1

“Wraparound” brackets for 2-1/2 in. and 3-5/8 in. steel studs. With integral support bracket. Brackets positioned for 2 layers of 1/2 in. drywall.



CI2104-LSS3X

“Wraparound” brackets for 2-1/2 in. and 3-5/8 in. steel studs. With integral support bracket.



BC1504-LLE

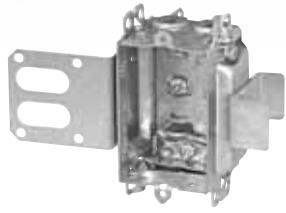
Holding prongs and prepositioned depth tabs on one side.



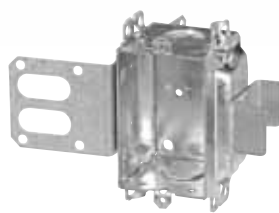
| Cat. No. | Width (in.) | Volume (Cu. in.) | Features | | Pryouts ends |
|---|-------------|------------------|----------|---------|--------------|
| | | | Ears | Bracket | |
| 2-1/2 in. Deep — Non-Gangable — 3 in. High | | | | | |
| CI2104-LSSA1X-1 | 2 | 12.5 | - | “SSX” | 4 |
| CI2104-LSSA2X-1 | 3-3/4 | 25.0 | - | “SSX” | 8 |
| CI2104-LSSX | 2 | 12.5 | - | “SSX” | 4 |
| CI2104-LSS1X-1 | 2 | 12.5 | - | “SSX” | 4 |
| CI2104-LSS2X-1 | 3-3/4 | 25.0 | - | “SSX” | 8 |
| CI2104-LSS2X | 3-3/4 | 25.0 | - | “SSX” | 8 |
| CI2104-LSS3X-1 | 5-1/2 | 37.5 | - | “SSX” | 12 |
| CI2104-LSS3X | 5-1/2 | 37.5 | - | “SSX” | 12 |
| 2-1/2 in. Deep — Non-Gangable — 3 in. High | | | | | |
| BC1504-LLE | 2-1/4 | 15.0 | - | P. Tabs | 4 |

Steel Stud Boxes

Device Boxes



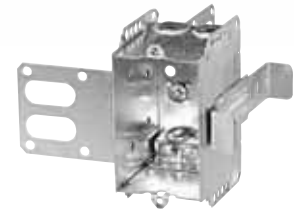
CI3102-LSSAX



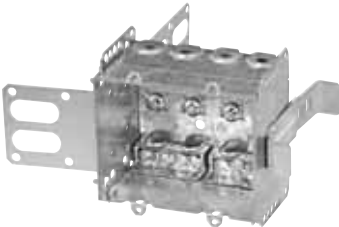
CI3102-SSX



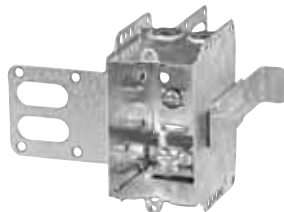
CI1204-3/4-SSX-HV



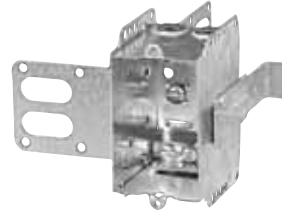
CI2104-LSSAX



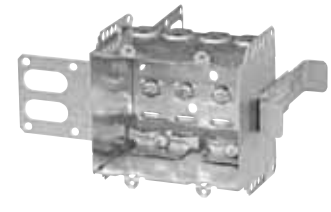
CI2104-LSSA-2X



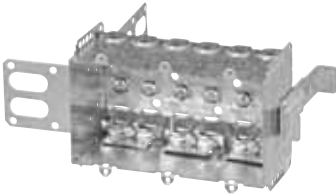
CI2104-LSSX



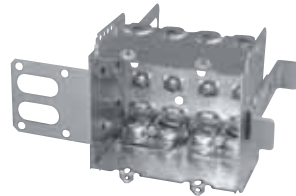
CI2104-LSS1X-1



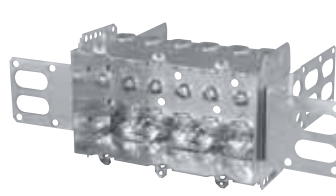
CI2104-LSS2X-1



CI2104-LSS3X-1



CI2104-LSS-2X



CI2104-LSS-3X



CISSX-6



| Cat. No. | Volume (Cu. in.) | Width (in.) | Features | Knockouts | | | Pryouts |
|--|------------------|-------------|-----------|--------------|----------------|--------------|---------|
| | | | Clamps | 1/2 in. ends | 1/2 in. bottom | 3/4 in. ends | ends |
| Device Boxes — 2 in. Deep — Gangable — 3 in. High | | | | | | | |
| CI3102-LSSAX | 12.0 | 2 | loomex/BX | - | - | - | 4 |
| CI3102-SSX | 12.0 | 2 | - | 2 | - | - | - |
| Device Boxes — 2-1/2 in. Deep — Pre-Ganged — 3 in. High | | | | | | | |
| CI1204-3/4-SSX-HV | 16.0 | 2 | - | - | - | 2 | - |
| CI2104-LSSAX | 12.5 | 2 | loomex/BX | - | - | - | 4 |
| CI2104-LSSA-2X | 25.0 | 3-3/4 | loomex/BX | - | - | - | 8 |
| CI2104-LSSA-3X | 37.5 | 5-1/2 | loomex/BX | - | - | - | 12 |
| CI2104-LSSX | 12.5 | 2 | loomex/BX | - | - | - | 4 |
| CI2104-LSS1X-1 | 12.5 | 2 | loomex/BX | - | - | - | 4 |
| CI2104-LSS2X-1 | 25.0 | 3-3/4 | loomex/BX | - | - | - | 8 |
| CI2104-LSS3X-1 | 37.5 | 5-1/2 | loomex/BX | - | - | - | 12 |
| CI2104-LSS2X | 25.0 | 3-3/4 | loomex/BX | - | - | - | 8 |
| CI2104-LSS3X | 37.5 | 5-1/2 | loomex/BX | - | - | - | 12 |

| Cat. No. | Description |
|-------------------------|--|
| Support Brackets | |
| CISSX-6 | Support bracket extension for 6 in. metal stud |