



UL and CSA Certified Braided Bonding Straps:
 BS100445
 BS100445U
 BS201246EU

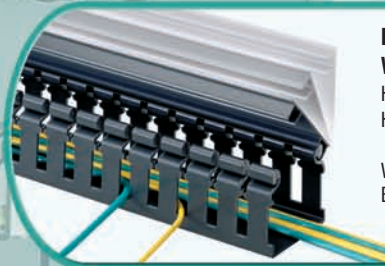


Grounding Busbars and Bonding Hardware:
 RGRB19U
 RGTBSG-C
 TRBSK



Plenum Rated Hook and Loop Cable Ties:
 HLTP21-X12
 HLTP21-X0

Delivers reliability by protecting against over-tensioning high performance cables.



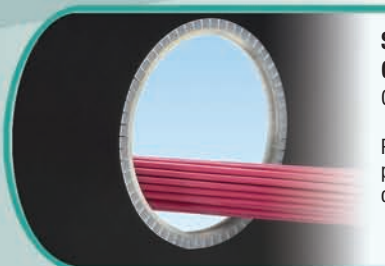
Hinged Cover Wiring Duct:
 H3X3WH6, HC3WH6
 H3X3BL6, HC3BL6

White = clean pathway
 Black = noisy pathway



Adhesive Backed Cable Tie Mount:
 ABMM-A-D
 ABM112-A-D
 (use with) PLT2S-C

Reliable adhesives for maximum dependability in the panel.



Slotted Adhesive Lined Grommet Edging:
 GEE99F-A-C

Provides cable abrasion protection and harnesses cables into a single bundle.



Tower Base – Control

Pan-Ty® and Dome-Top® Barb Ty Cable Ties:

PLT2S-C0
BT2S-C0

Weather resistant cable ties available in a broad selection of sizes, materials, and colors.



Adhesive Backed Cable Tie Mounts:

ABMM-A-D
ABM112-A-D
use with PLT2S-C

Reliable adhesives for maximum dependability in the panel.



Manual Controlled Tension Cable Tie Installation Tools:

GTS
GTH

Weather resistant cable ties with ergonomic hand tool promote worker safety and productivity.



Heavy Duty Insulated and Non-Insulated Ring Terminals:

PN12, PV12 and P12 Series

56% thicker material than standard terminals.



Contour Crimp™ Controlled Cycle Tool:

CT-1550

Ergonomically designed.



UL and CSA Approved Terminals and Disconnects

Designed and manufactured for fast assembly and reliable performance.

