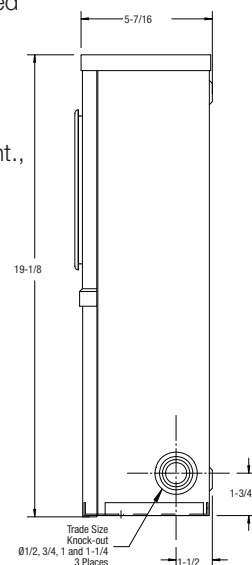
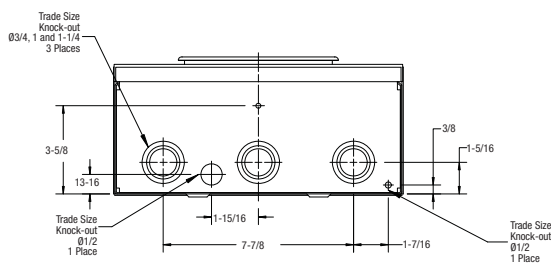
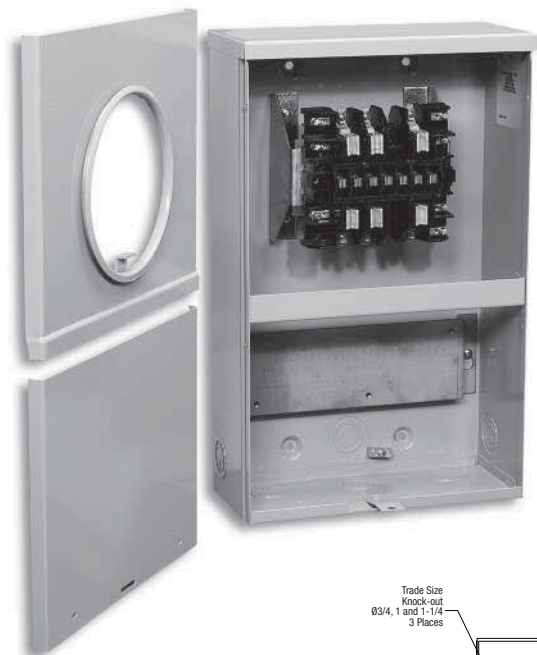


TRANSFORMER RATED METER SOCKETS • 20 AMP. 600 VOLTS MAX.

Product Specifications

- Conductor range: 14-10 AWG
- Meter compartment cover overlaps lower test switch compartment cover; insertion of meter securely holds upper cover in place by means of a catch
- Lower test switch compartment cover securely held by upper cover and a catch at bottom
- A removable mounting bridge is provided for fastening test switches
- Supplied with screw type ring
- Weatherproof Type 3R enclosure
- **Primarily used in:** AB, Sask., Man., Ont., N.B., N.S., P.E.I.



Dimensions are in inches

Ordering Information

CATALOGUE NUMBER	DESCRIPTION	DIMENSIONS (inches)			WEIGHT EACH	
		H	W	D	lb	kg
4 JAW						
CT104	Weatherproof Type 3R enclosure	19-1/8	11-13/16	5-7/16	16	7.2
5 JAW						
CT105	Weatherproof Type 3R enclosure	19-1/8	11-13/16	5-7/16	16	7.2
8 JAW						
CT108	Weatherproof Type 3R enclosure	19-1/8	11-13/16	5-7/16	18	8.1
13 JAW						
CT113	Weatherproof Type 3R enclosure	19-1/8	11-13/16	5-7/16	19	8.6



Approved for copper only.