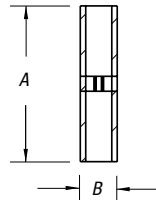


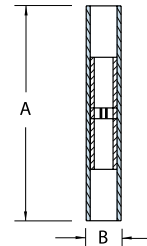
Splice Connectors

Non-Insulated Butt Splices



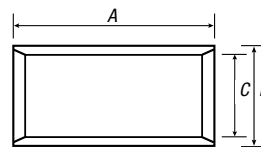
CAT. NO.	PKG. QTY.	WIRE RANGE	REC. TOOL	DIMENSIONS	
				A	B
2A-18	100	22-18	ERG4002	.62	.12
AA2	1,000	22-18		.62	.12
2B-14	100	16-14	ERG4002	.62	.16
BB2	1,000	16-14		.62	.16
2C-10	50	12-10	ERG4005	.72	.22
CC2	500	12-10		.72	.22
2D-8	25	9-8-7	ERG4005	1.03	.28
DD102	200	9-8-7		1.03	.28
2E-6	20	6-5	TBM6S	1.12	.37
EE2	200	6-5		1.12	.37
2F-4	15	4-3	TBM6S	1.25	.44
FF2	200	4-3		1.25	.44
2G21	5	2-1	TBM6S	1.72	.55
GG2	25	2-1		1.72	.55

Nylon-Insulated Parallel Splices



CAT. NO.	PKG. QTY.	WIRE RANGE	REC. TOOL	DIMENSIONS	
				A	B
2A20	100	22-20	ERG4001	.84	.20
RAA24	1,000	22-20		.84	.20
2B-16	100	18-16		.84	.23
RBB25	1,000	18-16		.84	.23
2C-12	50	14-12		.90	.28
RCC26	500	14-12		.90	.28

Sta-Kon® Parallel Splices



CAT. NO.	WIRE RANGE	CIR. MIL RANGE	REC. TOOL	LENGTH (A)	O.D. (B)	I.D. (C)	PKG. QTY.
A18-PS-M	22-16 AWG	509-3,260	ERG4002	.314	.129	.086	1,000
B14-PS-M	16-14 AWG	2,050-5,180	ERG4002	.315	.155	.113	1,000
C10-PS-D	12-10 AWG	5,180-13,100	ERG4005	.380	.220	.170	500
D8-PS-D	8 AWG	13,100-20,800	ERG4005	.375	.260	.180	500
E6-PS-D	6 AWG	20,800-33,100	WT115A	.500	.365	.266	500
F4-PS-W	4 AWG	33,100-52,600	WT115A	.531	.410	.302	250
G2-PS-W	2 AWG	52,600-83,700		.640	.521	.396	250
H1/0-PS-C	1/0 AWG	83,700-119,500	TBM8-750M-1	.750	.571	.446	100
J2/0-PS-C	2/0 AWG	119,500-150,500		.750	.632	.507	100
K3/0-PS-L	3/0 AWG	150,500-190,000		.750	.701	.564	50
L4/0-PS-L	4/0 AWG	190,000-231,100		.770	.766	.629	50
M250-PS-Q	250 kcmil	231,100-300,000		1.063	.926	.749	25
N300-PS-X	300 kcmil	300,000-380,000		1.125	1.100	.882	10
P400-PS-X	400 kcmil	380,000-478,000		1.250	1.200	.956	10
R500-PS-V	500 kcmil	478,000-600,000		1.438	1.330	1.060	5

The total combined cross sectional area of all wires must be within the CMA range.

Rated at 150° C.