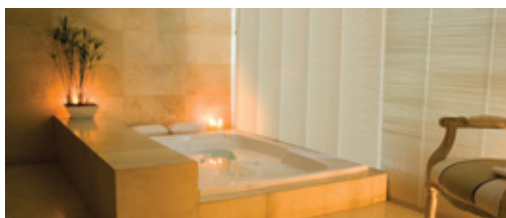


- Programmable hour or minute time delay in 2 modes for preset groups or down to 1 minute increments
- Universal compatibility with all light load types: incandescent/halogen, magnetic low-voltage, electronic low-voltage, fluorescent, compact fluorescent and LED
- No neutral required for installation
- Rated for up to 1800W loads AC at 120V
- Aspire timers match the aesthetics of all Z-Wave and Aspire devices
- Available in all Aspire color combinations as well as 7 standard device colors, color change kits also available for quick changes



Specific timer solutions for today's needs

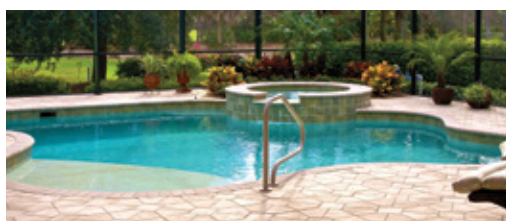


Bathroom controls

Timers are perfect for controlling fans, heat lamps or wall heaters, towel warming rails, radiant floor heating systems, whirlpool tubs, and saunas.

See page A-40

Shown:
PT18M



Pool, spa & outdoor areas

Power-hungry pool heaters and spa motors are ideal candidates for timed controls, as well as patio & landscape lighting, or driveway snow and ice-melting systems.

See page A-40

Shown:
PT18H



Minute and hour timers

Product description

Single-pole

15A, 120V/AC; 1800W

Incandescent/halogen, magnetic low-voltage, electronic low-voltage, fluorescent, compact fluorescent, LED

Design features

- Perfect for both new construction and retrofit with no neutral required for installation
- Available in both hours and minutes versions
- Five (5) preset time intervals
- Easily programmable to alternate time intervals to suit your needs
- Color change faceplate kits available
- Works with all popular load types: incandescent/halogen, magnetic low-voltage, electronic low-voltage, fluorescent, compact fluorescent, and LED
- Horsepower rated for 1/4 HP motor loads
- LED indication of time interval selected and countdown



PT18M



PT18H

Timers



Rating	A	V/AC	W	Description	Color suffix	Catalog no.
	15	120	1800	5-button minute timer with OFF, single-pole	A, B, BK, GY, LA, V, W, C1, C2	<input type="checkbox"/> PT18M__
				5-button hour timer with OFF, single-pole	A, B, BK, GY, LA, V, W, C1, C2	<input type="checkbox"/> PT18H__

cULus Listed to UL60730-1A & 60730-2-7, file no. E325082; certified to E60730-2-9:01; NOM certified

Color change kits for minute and hour timers

Description	Color suffix	Catalog no.
Color change kit 1 (5, 10, 15, 30, 60) for minute timer	A, BK, GY, LA, V, W	<input type="checkbox"/> PT1MK-__-P
Color change kit 2 (5, 10, 20, 30, 60) for minute timer	A, BK, GY, LA, V, W	<input type="checkbox"/> PT2MK-__-P
Color change kit 3 (5, 15, 30, 45, 60) for minute timer	A, BK, GY, LA, V, W	<input type="checkbox"/> PT3MK-__-P
Color change kit 4 (1, 5, 10, 15, 30) for minute timer	A, BK, GY, LA, V, W	<input type="checkbox"/> PT4MK-__-P
Color change kit 5 (1, 10, 15, 20, 30) for minute timer	A, BK, GY, LA, V, W	<input type="checkbox"/> PT5MK-__-P
Color change kit 1 (1, 2, 4, 8, 12) for hour timer	A, BK, GY, LA, V, W	<input type="checkbox"/> PT1HK-__-P
Color change kit 2 (1, 3, 6, 9, 12) for hour timer	A, BK, GY, LA, V, W	<input type="checkbox"/> PT2HK-__-P
Color change kit 3 (2, 4, 8, 12, 24) for hour timer	A, BK, GY, LA, V, W	<input type="checkbox"/> PT3HK-__-P
Color change kit 4 (30, 1, 2, 4, 8) for hour timer	A, BK, GY, LA, V, W	<input type="checkbox"/> PT4HK-__-P
Color change kit 5 (15, 30, 1, 2, 4) for hour timer	A, BK, GY, LA, V, W	<input type="checkbox"/> PT5HK-__-P

Color ordering information:

For ordering devices, include Catalog no. followed by the Color suffix: A (Almond), B (Brown), BK (Black), GY (Gray), LA (Light Almond), V (Ivory), W (White), C1 (Color Change Kit: A, W, V), C2 (Color Change Kit: LA, W, V)

A	B	BK	GY	LA	V	W
(Almond)	(Brown)	(Black)	(Gray)	(Lt. Almond)	(Ivory)	(White)
A	W	V	LA	W	V	
C1 Color Kit			C2 Color Kit			
A (Almond), W (White), V (Ivory)			LA (Light Almond), W (White), V (Ivory)			

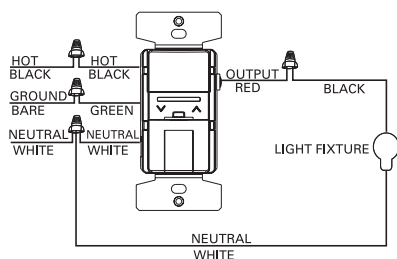
Dimensional information: A-42 **Specification information:** Please visit www.eaton.com/wiringdevices
Compliances, specifications and availability are subject to change without notice.

Occupancy & vacancy sensors

Sensor dimmer

OS106D1, VS106D1

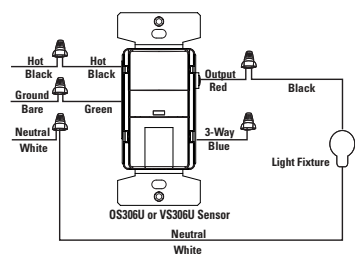
INC, MLV
Single-pole



Standard sensor

OS306U, VS306U

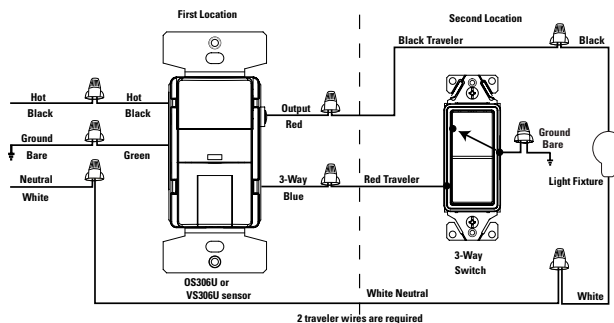
INC, MLV, ELV, FLR, LED, CFL
Single-pole



Standard sensor

OS306U, VS306U

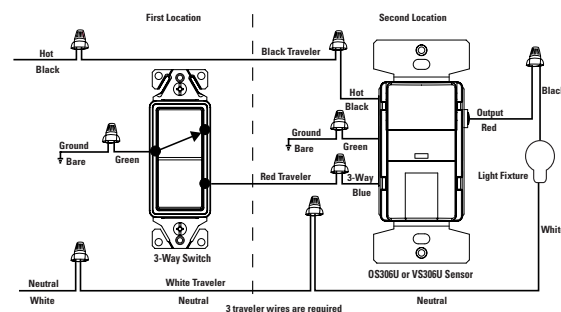
INC, MLV, ELV, FLR, LED, CFL
3-Way with sensor in location with hot wire



Standard sensor

OS306U, VS306U

INC, MLV, ELV, FLR, LED, CFL
3-Way with switch in location with hot wire



Timers

Aspire, Electronic

Timers

9590, 9591, PT18M, PT18H

INC, MLV, ELV, FLR, LED, CFL
Single-pole

