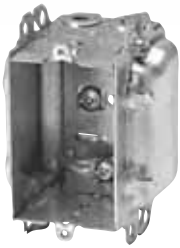


Device Boxes

Armoured and Nonmetallic Sheathed Cable Clamps



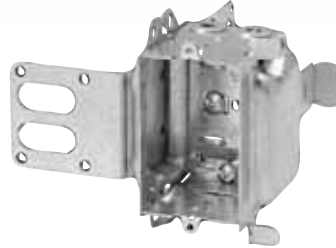
BC3104-LH

Positioning tabs. Provision for external nailing.



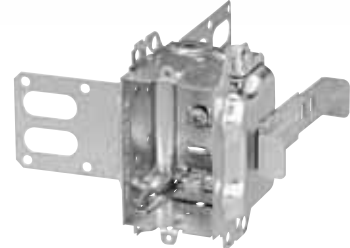
BC3104-LHTQ

One screw mounting. Provision for external nailing. Positioning tabs for 1/2 in. and 3/4 in. drywall.



BC3104-LSSX

"Wraparound" bracket for 2-1/2 in. and 3-5/8 in. steel studs. With integral support bracket.



CI3104-LSS1X-1

"Wraparound" bracket for 2-1/2 in. and 3-5/8 in. steel studs. With integral support bracket. Brackets positioned for 2 layers of 1/2 in. drywall.



CI1804-LH

Positioning tabs. External nailing. Mounting slots for internal screw installation. X-Cube adds 5.5 cu. in.



BC2004-LH

Provision for external nailing. Holding prongs and prepositioned depth tabs on one side.



BC2004-LHTQ

Internally embossed slots for screw mounting. Fixed positioning tabs for single 1/2 in. drywall along with retractable positioning tabs for double 1/2 in. drywall applications. Fixed positioning tabs for outside wall applications. Holding prongs. One screw mounting.

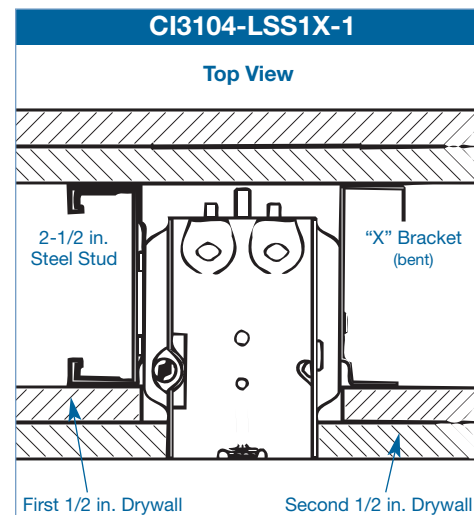


CI2016-LX

Self-locking spring clamps. Holding prongs and prepositioned depth tabs on one side. **Approved for nonmetallic sheathed cable only.**

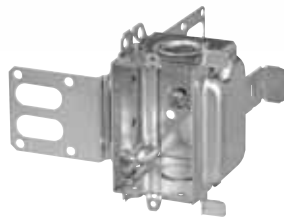


Cat. No.	Volume (Cu. in.)	Features		Pryouts ends
		Ears	Bracket	
2-1/2 in. Deep — Gangable — 3 in. x 2 in.				
BC3104-LH	16.0	-	P. Tabs	4
BC3104-LHTQ	16.0	-	P. Tabs	4
BC3104-LSSX	16.0	-	"SSX"	4
CI3104-LSS1X-1	16.0	-	"SSX"	4
CI1804-LH	18.0	-	P. Tabs	4
2-3/4 in. Deep — Non-Gangable — 3-3/4 in. x 2-3/16 in.				
BC2004-LH	18.5	-	P. Tabs	4
BC2004-LHTQ	20.5	-	P. Tabs	4
2-1/2 in. Deep — Non-Gangable — 3-3/4 in. x 2 in.				
CI2016-LX	18.5	-	P. Tabs	4

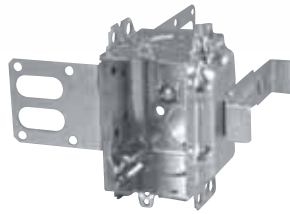


Steel Stud Boxes

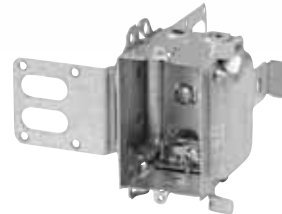
Device Boxes



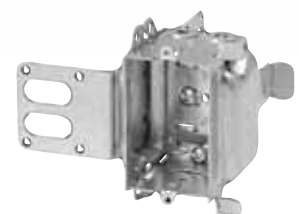
CI3104-KSSX



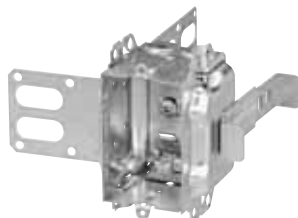
BC3104-KSS1X-1



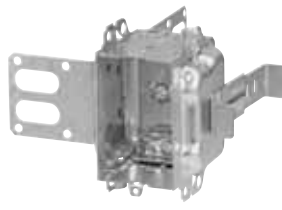
BC3104-LSSAX



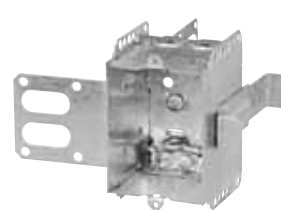
BC3104-LSSX



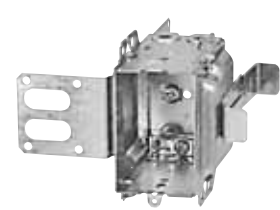
CI3104-LSS1X-1



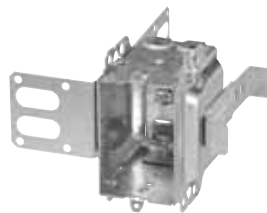
CI3104-LSSA1X-1



CI1504-LSSAX



CI3004-LSSAX-1



CI3004-LSSX-1



CISSX-6



Cat. No.	Volume (Cu. in.)	Features	Knockouts			Pryouts
		Clamps	1/2 in. ends	1/2 in. bottom	3/4 in. ends	ends
Device Boxes — 2-1/2 in. Deep — Gangable — 3 in. x 2 in.						
CI3104-KSSX	16.0	-	2	2	2	-
BC3104-KSS1X-1	16.0	-	2	2	2	-
BC3104-LSSAX	16.0	loomex/BX	-	-	-	4
BC3104-LSSX	16.0	loomex/BX	-	-	-	4
CI3104-LSS1X-1	16.0	loomex/BX	-	-	-	4
CI3104-LSSA1X-1	16.0	loomex/BX	-	-	-	4
CI3104-SSX	16.0	loomex/BX	2	2	-	-
Device Boxes — 2-1/2 in. Deep — Non-Gangable — 3 in. x 2 in.						
CI1504-LSSAX	15.0	loomex/BX	-	-	-	4
Device Boxes — 3 in. Deep — Gangable — 3 in. x 2 in.						
CI3004-LSSAX-1	18.0	loomex/BX	-	-	-	4
CI3004-LSSX	18.0	loomex/BX	-	-	-	4
CI3004-LSSX-1	18.0	loomex/BX	-	-	-	4

Cat. No.	Description
Support Brackets	
CISSX-6	Support bracket extension for 6 in. metal stud