



# Fluorescent & HID lighting solutions

## Delivering installation savings, energy conservation and improved performance

As a leading supplier of area and emergency lighting solutions for installation in hazardous locations and corrosive environments, Pauluhn™ products are specifically designed for drilling and other high abuse applications. Wherever reliable, cost-effective lighting is critical to the safe, secure and productive functioning of your operation, you can count on Pauluhn by Eaton's Crouse-Hinds.

## Pauluhn™ DuraPro Linear Fluorescent Luminaires

### Application

Hazardous area luminaire designed specifically for extreme environments such as drilling.

Shock- and vibration-resistant with spring loaded lampholders and integral primary and secondary retention points for safety.

### Rig Locations

Derrick/mast, perimeter, shale shaker, mud tanks/pumps, SCR house and motor control.

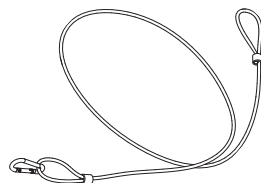
### Certifications

- Class I, Zone 2, Groups IIA, IIB, IIC
- Class I, Division 2, Groups A, B, C, D
- Class II, Division 2, Groups F, G
- Class III
- IP66

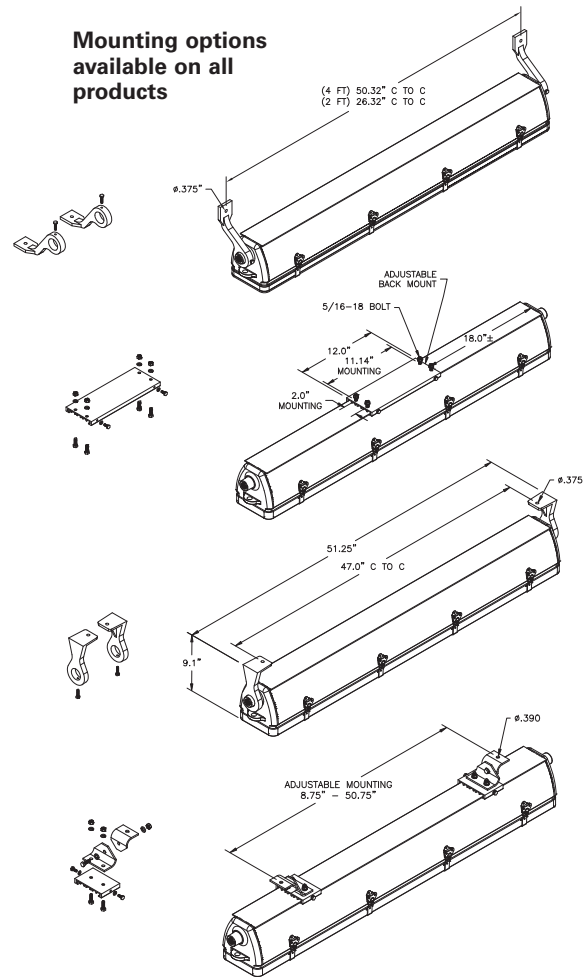
### Features

- Spring loaded lampholders for linear lamps resist shock and vibration
- Acrylic lens withstands constant exposure to sunlight and contact with petroleum-based products
- Neoprene gasket resists petroleum
- Permanent safety cable mounting points at each end
- Extruded aluminum body and cast aluminum end caps

### Secondary retention cable available with all luminaires



### Mounting options available on all products



Model	Length	No. of Lamps	Lamp Wattage	Lamp Type	Voltage/Freq.	Mounting Style
DP42871L	4 foot	4	60W	T12 HO	120-277V 50/60 Hz	Surface/ Ceiling
DP42571L	4 foot	2	54W	T5 HO	120-277V 50/60 Hz	Surface/ Ceiling