

ONE HOLE HYLUG™ FLEX CONDUCTOR STANDARD BARREL BELLED END

C-58

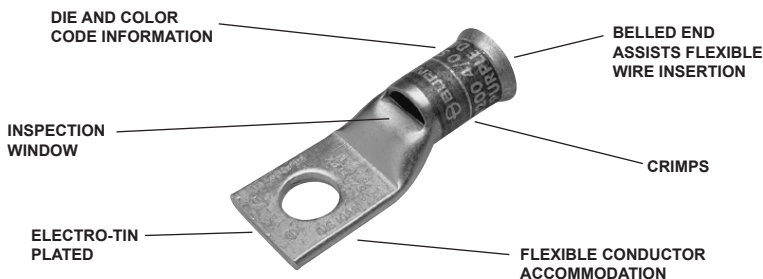
TYPE YA-LB

COPPER COMPRESSION
TERMINAL

UL Listed 90° C, Up to 35 kV ♦

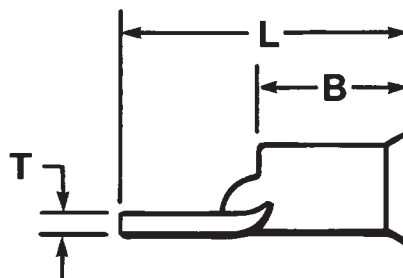
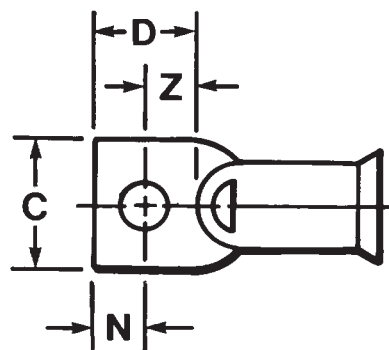


NOTE: Field bending straight lugs to achieve an angular connection will void UL Listing / CSA Certifications and BURNDY will not be liable for the connection.

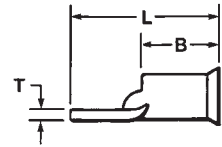
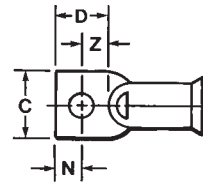


Features & Benefits

- Inspection window allows for visual verification that the wire has been fully inserted prior to crimping the lug
- Barrel is designed with a “belled” end opening at the wire entry, to ensure smooth insertion of highly flexible stranded wire, preventing possible damaging of the wire strands during insertion
- Short/Standard length barrel is recommended for installations with limited space requirements
- 45° and 90° angular lugs are available; please contact Customer Service
- Electro-tin plated unless otherwise specified to reduce galvanic corrosion (bimetallic) and resist corrosive elements
- Connectors are clearly marked with stamping and barrel color coding
- Connectors accommodating wire sizes #10 - 4/0 AWG accommodate both Flex and Code Wire. See Tables on each page for specific details
- Tables in this section identify flex wire as the nominal flex wire size followed by the wire classes and DLO wire size and stranding. For Class Wire Strand counts, see the table at the beginning of this section



**ONE HOLE HYLUG™
FLEX CONDUCTOR
STANDARD BARREL
NO INSPECTION
WINDOW
(Continued)**



NOTE: Field bending straight lugs to achieve an angular connection will void UL Listing / CSA Certifications and BURNDY will not be liable for the connection.

UL Listed 90° C, Up to 35 kV ♦

C-59

Catalog Number	Flex Conductor Size AWG/kcmil	Bolt Hole Size	Wire Strip Length	Installation Tooling Dieless (# of crimps)	Die Index	Dimensions	
						B	L
YA8C-LB	#8 AWG #6 Sol, #8 Sol	#10	7/16"	Y / PAT81KFT (1)	49	0.41"	1.12"
	1013						
YA5C-LB	#5 AWG #6 Flex G,H,I,K,M, DLO (61/24)	1/4"	7/8"	Y / PAT81KFT (1)	7	0.44"	1.73"
	1014						
YA4C-LB	#4 AWG #5 Flex G,H,I,K,M, DLO (105/24)	1/4"	7/8"	Y / PAT81KFT (1)	8	0.50"	1.73"
	1015						
YA3C-LB	#3 AWG #4 Flex G,H,I,K,M, DLO (105/24)	5/16"	15/16"	Y / PAT81KFT (1)	9	0.55"	1.94"
YA2C-LB	#2 AWG #3 Flex G,H,I,K,M, DLO (125/24)	5/16"	15/16"		1016		
YA1C-LB	#1 AWG #2 Flex G,H,I,K,M, DLO (150/24)			5/16"	15/16"	1017	0.61"
YA25-LB	1/0 AWG #1 Flex G,H,I,K,M, DLO (225/24)	5/16"	15/16"			11	
YA26-LB	2/0 AWG 1/0 Flex G,H,I,K,M, DLO (275/24)			3/8"	1"	1018	0.68"
YA27-LB	3/0 AWG 2/0 Flex G,H,I,K,M, DLO (325/24)	1/2"	1-1/16"			12	
						1019	0.75"
				13			
				1020	0.83"	2.61"	
				14			
				1021	0.91"	2.67"	

Catalog Number	Flex Conductor Size AWG/kcmil	Bolt Hole Size	Wire Strip Length	Installation Tooling Dieless (# of crimps)	Die Index	Dimensions	
						B	L
YA28-LB	4/0 AWG 3/0 Flex G,H,I,K,M, DLO (450/24)	1/2"	1-1/16"	Y / PAT81KFT (1)	15	1.02"	2.77"
	1022						
YA29-LB	250 kcmil 4/0 Flex G,H	1/2"	1-1/16"	Y / PAT81KFT (1)	16	1.11"	2.82"
	1023						
YA30-LB	300 kcmil 250 Flex G,H 4/0 Flex I, K, M DLO (550/24)	1/2"	1-1/8"	Y / PAT81KFT (1)	17	1.20"	2.93"
	1024						
YA31-LB	350 kcmil 250 Flex I,K,M, DLO 262 (650/24)	1/2"	1-3/16"	Y / PAT81KFT (1)	18	1.29"	3.31"
YA32-LB	400 kcmil 300 Flex G,H,I,K,M, DLO 313 (775/24)	5/8"	1 1/4"		1025		
YA34-LB	500 kcmil 350 Flex G,H,I,K,M, DLO 373 (925/24) 400 Flex G,H,I			5/8"	1-7/16"	Y / PAT81KFT (1)	19
YA36-LB	600 kcmil 450 Flex I,K,M DLO 444 (1100/24) 500 Flex G,H	5/8"	1-3/4"				1026
YA38-LB	700 kcmil 500 Flex I,K,M DLO 535 (1325/24) 550 Flex G,H,I			5/8"	1-15/16"	Y / PAT81KFT (1)	20
YA39-LB	750 kcmil 600 Flex G 550 Flex M	5/8"	1-15/16"				1027
YA40-LB	800 kcmil 600 Flex H,I,K,M 1000 kcmil			5/8"	1-15/16"	Y / PAT81KFT (2)	21
YA44-LB	650 Flex I 750 Flex G,H DLO 777 (1925/24)	5/8"	1-15/16"				1028
						Y / PAT81KFT (2)	22
				1029			
				Y / PAT81KFT (2)	23	1.81"	4.27"
					1030		
				Y / PAT81KFT (2)	24	1.89"	4.27"
					1031		
				Y / PAT81KFT (2)	25	1.95"	4.27"
					1032		
				Y / PAT81KFT (2)	27	2.17"	4.5"
					1033		

Note: All dimensions shown are for reference only.