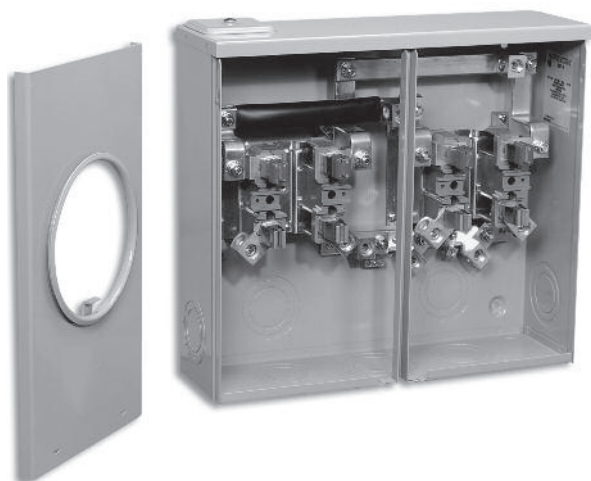


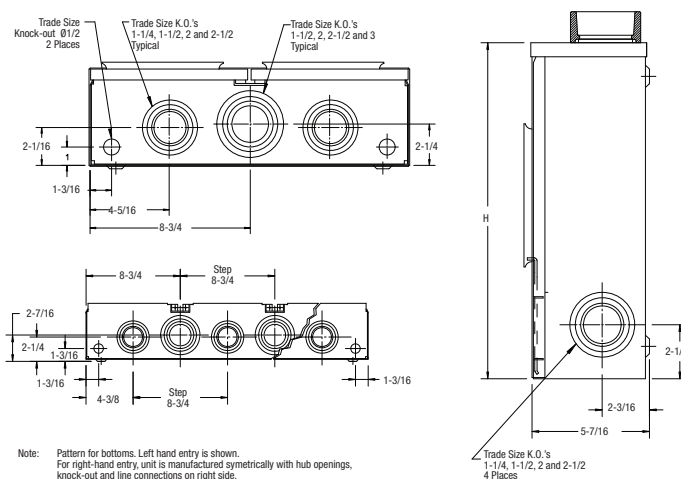
HORIZONTAL METER TROUGHS, 200 AMP. PER POSITION • 200 AMP. 600 VOLTS MAX. MAIN LUGS



Product Specifications

- Conductor range: Line: 6 AWG-250 kcmil
Load: 6 AWG-250 kcmil
- Aluminum tunnel type connectors
- Factory prebussed from main lugs to each position
- Supplied with hub opening closure plate for underground service
- Combination overhead underground
- Supplied with screw type ring
- Weatherproof Type 3R enclosure
- **Primarily used in:** All provinces


NOTE: Supply from an underground network often requires use of stud type receptacle. Consult your local utility.



Ordering Information

Dimensions are in inches

CATALOGUE NUMBER		METER POSITION	DIMENSIONS (inches)			WEIGHT EACH	
			H	W	D	lb	kg
4 JAW							
LEFT-HAND ENTRY	RIGHT-HAND ENTRY						
BD2-V	BD2-VH	2 position	15-1/2	17-1/2	5-7/16	23	10.4
BD3-V	BD3-VH	3 position	15-1/2	26-1/4	5-7/16	35	15.9
BD4-V	BD4-VH	4 position	15-1/2	35	5-7/16	47	21.3
BD2-VBC	—	2 position for British Columbia	20	17-1/2	5-7/16	27	12.2

 Approved for copper or aluminum.