

## Shrink-Kon® Splice Insulators and Insulating Covers

### Motor Stub Splice Insulators

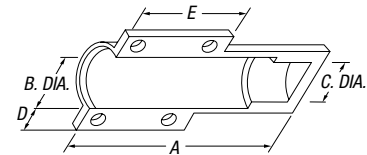
- Re-enterable motor stub insulator
- Easy installation
- No special tools required

This innovative product has been designed to insulate motor stub splices quickly, easily, and dependably. It consists of a boot-type insulator with integral Ty-Rap® cable ties. To install, simply position the insulator over the bolted splice and tighten the cable ties. That's all there is to it. It produces uniform, high-quality installations every time... in about 30 seconds. The completed installation is immediately ready for inspection and use. If required, the insulator can be easily removed. Simply snip the cable ties and slide the insulator off the splice. It leaves no sticky residue.



CAT. NO.	WIRE RANGE	LENGTH (IN.)	BOLT MAX. A (IN.)	B DIA. (IN.)	C DIA. (IN.)	D (IN.)	E (IN.)	STD. PKG. QTY.
MSC14*	#14-#10 AWG	3.38	1.5	.56	.50	.38	.35	15
MSC8	#12-#8 AWG	3.38	2.39	.73	.67	.38	1.20	10
MSC2	#12-#2 AWG	.75	3.25	.95	.88	.38	1.5	10
MSC20	#2-2/0 AWG	1.5	4.25	1.39	1.05	.43	1.70	4
MSC250	3/0 AWG-300 kcmil	1.5	7.56	1.88	1.80	.45	1.90	2
MSC500	350-500 kcmil	1.75	8.88	2.56	2.48	.45	2.10	5

Order in multiples of std. pkg.  
\*One Ty-Rap® cable tie only



#### Specifications .....

- UL File E9809. UL and CSA Certified (94V-1 Flammability Class)
- Rated for 600V and 90° C application

#### Material

- Body: Modified Neoprene Elastomer
- Straps: Nylon

### Insulator Connectors

INSULATOR CAT. NO.	WIRE RANGE	LUGS						TERMINALS		BOLT MAXIMUM LENGTH (IN.)
		2-HOLE COLOR-KEYED® LUGS (AL-CU WIRE)	1-HOLE COLOR-KEYED® LUGS (AL-CU WIRE)	2-HOLE CAST COPPER LUGS (CU WIRE)	1-HOLE CAST COPPER LUGS (CU WIRE)	2-HOLE COLOR-KEYED® LUGS (CU WIRE)	1-HOLE COLOR-KEYED® LUGS (AL-CU WIRE)			
MSC14	#14-#10 AWG	—	—	—	—	—	—	14RB4-14RB10 RB14-4-RB14-10	10RC6-10R1C0 RC10-6-RC10-10	3/8
MSC8	#12-#8 AWG	—	60096	—	53104	—	54104	—	—	3/8
			60097 60101 60102							
MSC2	#12-#2 AWG	—	60099	60103-60118	53204	54105	54204	54105	—	3/4
			60230 60236		53205 53206	54106	54205 54206	54106		
MSC20	#2-2/0 AWG	60230 60236	60118-60138	53207	53107	54207	54107	—	—	1
				53208	53108	54208	54108			
MSC250	3/0 AWG-300 kcmil	20238-60256	60140-60157	53209-53113	53109-53113	53209-54214	54109-54114	—	—	1 1/2
MSC500	350-500 kcmil	60260-60273	60165-60172	53115-53118	53115 53118	54215-54218	54115-54118	—	—	1 3/4