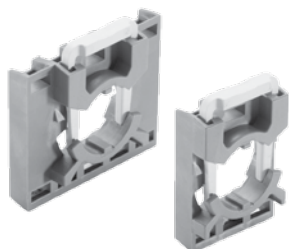
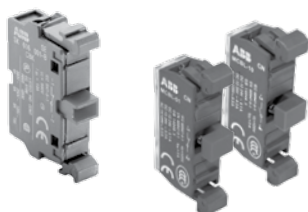


## Accessories

### Contact blocks and holders



Holders for contact block

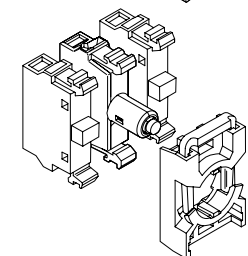
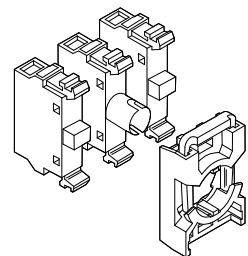
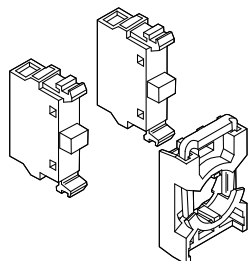


Contact block

Micro switch blocks



Double contact blocks



Description	Catalog number	Weight oz.
<b>Holders</b>		
Holders for three blocks	MCBH-00	0.21
Holders for five blocks*	MCBH5-00	0.28

\* Note: Double contact blocks are required on side positions

#### Single contact blocks for front mounting

1 NO	MCB-10	0.46
1 NC	MCB-01	0.46
1 NO w/gold plated contacts	MCB-10G	0.46
1 NC w/gold plated contacts	MCB-01G	0.46

#### Micro switch blocks

1 NO	MCBL-10	0.35
1 NC	MCBL-01	0.35

#### Double contact block for front mounting

2 NO	MCB-20	0.92
2 NC	MCB-02	0.92
1 NO + 1 NC	MCB-11	0.92
2NC w/gold plated contacts	MCB-02G	0.92
2NO w/gold plated contacts	MCB-20G	0.92

Note: To be used together with MCBH5-00 when Contact blocks in position 4- and 5- are needed. Also when using 2nd lamp blocks MCBH-00 together with Selector Switch and Contact block in position 3- is needed

#### Contact blocks with holder for front mounting ①

##### For non-illuminated operators

1 NC	MCBH-01
1 NO	MCBH-10
2 NC	MCBH-02
2 NO	MCBH-20
3 NC	MCBH-03
3 NO	MCBH-30
1 NO + 1 NC	MCBH-11
1 NO + 2 NC	MCBH-12
2 NO + 1 NC	MCBH-21

##### For illuminated operator

1 LB	MCBH-001
1 NC + 1 LB	MCBH-011
1 NO + 1 LB	MCBH-101
1 NO + 1 NC + 1 LB	MCBH-111
2 NO & 1 LB	MCBH-021
2 NO & 1 LB	MCBH-201

① Max. # of blocks in holder is 3.