

The BURNDY® WEJTAP™ System has a wide variety of connectors available for many different conductor ranges.

Color coded boosters and connectors ensure proper matching during installation.

The BURNDY® Power Booster is designed and engineered for the highest reliability and safety. Proven rimfire design means misfires are almost nonexistent. Close manufacturing component tolerances provide maximum resistance to moisture or submersion.



**ORDERING INFORMATION**

■ Power boosters may be ordered separately in boxes of 25.

- Red boosters    **Cat. # WPBRN Box 25**
- Blue boosters    **Cat. # WPBBN Box 25**
- Yellow boosters    **Cat. # WPBYN Box 25**

Select appropriate connector; match with equal number of color coded boosters (see below).

WPB—Red, Blue, Yellow Boosters

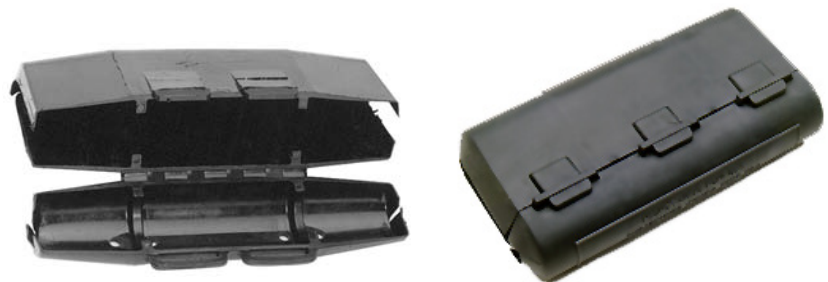
For information about conductors which are not listed, and for further ordering information, please contact BURNDY® at 1-800-346-4175.



J-5

**WEJTAP™ COVER**

WEJTAP™ Covers are installed on WEJTAP™ connectors to prevent them from coming in contact with other taps or exposed ground points. The covers are rugged snap-on devices available in four sizes to cover all connector sizes.



| Cover Catalog Number | WEJTAP™ Size        | Nominal Conductor Range Run | Nominal Conductor Range Tap | Cover Color         |
|----------------------|---------------------|-----------------------------|-----------------------------|---------------------|
| WCCR                 | Small Old Style Red | 8-1/0                       | 8-2                         | Black Weather Rated |
| WCCB                 | Red & Blue          | 2-300                       | 6-300                       |                     |
| WCCSY                | Small (Yellow)      | 300-556.50                  | 6-556.50                    |                     |
| WCCLY                | Large (Yellow)      | 556.50-1033.50              | 556.5-1033.50               |                     |

BURNDY WEJTAP™  
SELECTION CHART

By Diameter

| Catalog Number                | Sum of Diameters |       | Run   |       | Tap   |       |
|-------------------------------|------------------|-------|-------|-------|-------|-------|
|                               | Max              | Min   | Max   | Min   | Max   | Min   |
| Installed with yellow booster |                  |       |       |       |       |       |
| WCY52                         | 1.190            | 1.001 | 0.750 | 0.537 | 0.588 | 0.364 |
| WCY53                         | 1.236            | 1.012 | 0.750 | 0.537 | 0.619 | 0.409 |
| WCY54                         | 1.302            | 1.063 | 0.750 | 0.537 | 0.630 | 0.46  |
| WCY55                         | 1.370            | 1.140 | 0.750 | 0.537 | 0.714 | 0.499 |
| WCY56                         | 1.456            | 1.245 | 0.750 | 0.537 | 0.750 | 0.524 |
| WCY57                         | 1.190            | 0.979 | 0.893 | 0.666 | 0.326 | 0.257 |
| WCY58                         | 1.087            | 0.931 | 0.893 | 0.666 | 0.258 | 0.198 |
| WCY59                         | 1.061            | 0.891 | 0.893 | 0.666 | 0.199 | 0.162 |
| WCY60                         | 1.854            | 1.686 | 0.950 | 0.722 | 0.950 | 0.722 |
| WCY61                         | 1.741            | 1.524 | 0.940 | 0.683 | 0.940 | 0.666 |
| WCY62                         | 1.594            | 1.379 | 0.940 | 0.683 | 0.750 | 0.573 |
| WCY63                         | 1.500            | 1.297 | 0.940 | 0.683 | 0.750 | 0.481 |
| WCY64                         | 1.421            | 1.216 | 0.940 | 0.683 | 0.650 | 0.436 |
| WCY65                         | 1.360            | 1.147 | 0.940 | 0.683 | 0.562 | 0.382 |
| WCY66                         | 1.305            | 1.097 | 0.940 | 0.683 | 0.562 | 0.336 |
| WCY67                         | 1.270            | 1.054 | 0.940 | 0.683 | 0.450 | 0.315 |
| WCY68                         | 1.253            | 1.115 | 0.940 | 0.683 | 0.326 | 0.257 |
| WCY69                         | 1.187            | 1.059 | 0.940 | 0.683 | 0.262 | 0.204 |
| WCY70                         | 1.130            | 1.013 | 0.940 | 0.683 | 0.204 | 0.162 |
| WCY71                         | 2.216            | 2.074 | 1.133 | 0.907 | 1.156 | 0.947 |
| WCY72                         | 2.133            | 1.999 | 1.133 | 0.907 | 1.142 | 0.927 |
| WCY73                         | 2.098            | 1.946 | 1.133 | 0.907 | 1.142 | 0.907 |
| WCY74                         | 2.035            | 1.891 | 1.133 | 0.907 | 1.142 | 0.858 |
| WCY75                         | 1.969            | 1.822 | 1.133 | 0.889 | 0.927 | 0.763 |
| WCY76                         | 1.901            | 1.741 | 1.133 | 0.889 | 0.900 | 0.700 |
| WCY77                         | 1.829            | 1.677 | 1.133 | 0.889 | 0.750 | 0.575 |
| WCY78                         | 1.750            | 1.599 | 1.133 | 0.889 | 0.729 | 0.525 |
| WCY79                         | 1.670            | 1.526 | 1.133 | 0.889 | 0.722 | 0.364 |
| WCY80                         | 1.610            | 1.466 | 1.133 | 0.889 | 0.608 | 0.364 |
| WCY81                         | 1.555            | 1.411 | 1.133 | 0.889 | 0.608 | 0.364 |
| WCY82                         | 1.506            | 1.362 | 1.133 | 0.889 | 0.436 | 0.324 |
| WCY83                         | 1.440            | 1.288 | 1.133 | 0.889 | 0.398 | 0.257 |
| WCY84                         | 1.369            | 1.221 | 1.133 | 0.889 | 0.333 | 0.203 |
| WCY85                         | 1.306            | 1.158 | 1.133 | 0.889 | 0.258 | 0.162 |
| WCY86                         | 2.496            | 2.332 | 1.250 | 0.893 | 1.250 | 1.000 |
| WCY87                         | 2.418            | 2.251 | 1.250 | 0.893 | 1.250 | 0.856 |
| WCY88                         | 2.354            | 2.194 | 1.250 | 0.893 | 1.211 | 0.971 |
| WCY89                         | 2.297            | 2.137 | 1.250 | 0.893 | 1.200 | 0.923 |
| WCY90                         | 2.238            | 2.083 | 1.250 | 0.893 | 1.159 | 0.868 |
| WCY91                         | 2.173            | 2.013 | 1.250 | 0.893 | 1.130 | 0.856 |
| WCY92                         | 2.104            | 1.950 | 1.250 | 0.893 | 0.904 | 0.720 |
| WCY93                         | 2.029            | 1.869 | 1.250 | 0.893 | 0.900 | 0.700 |
| WCY94                         | 1.967            | 1.831 | 1.250 | 0.893 | 0.750 | 0.588 |
| WCY95                         | 1.888            | 1.728 | 1.250 | 0.893 | 0.722 | 0.525 |
| WCY96                         | 1.811            | 1.648 | 1.250 | 0.893 | 0.609 | 0.364 |
| WCY97                         | 1.748            | 1.591 | 1.250 | 0.893 | 0.598 | 0.385 |
| WCY98                         | 1.695            | 1.533 | 1.250 | 0.893 | 0.598 | 0.364 |
| WCY99                         | 1.644            | 1.489 | 1.250 | 0.893 | 0.398 | 0.324 |

J-7