

4 in. Square Boxes

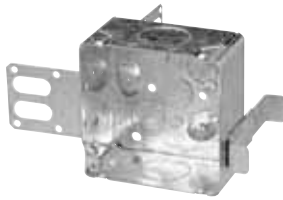
Conduit Knockouts



BC52171-HV-KIT



BC52171-KSSXHVKIT



CI52171-1-SSX-1

"Wraparound" bracket for 2-1/2 in. and 3-5/8 in. steel studs. With integral support bracket. Present for 2 x 1/2 in. drywall thickness.



CI52171-1



BC52171-K

Concentric knockouts.



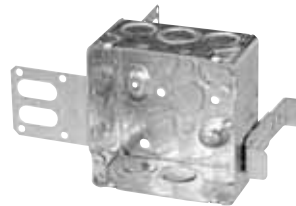
CI52171-KSB

Concentric knockouts.



BC52171-KSSX

Concentric knockouts. "Wraparound" bracket for 2-1/2 in. and 3-5/8 in. steel studs. With integral support bracket. Present for 1 x 1/2 in. drywall thickness.



CI52171-KSSX-1

Concentric knockouts. "Wraparound" bracket for 2-1/2 in. and 3-5/8 in. steel studs. With integral support bracket. Present for 2 x 1/2 in. drywall thickness.



BC53171-K

Concentric knockouts.



| Cat. No. | Volume (Cu. in.) | Features | | Knockouts | | | | |
|--------------------------|------------------|----------|---------------------|---------------|----------------|---------------|----------------|-------------|
| | | Bracket | Raised Ground Screw | 1/2 in. sides | 1/2 in. bottom | 3/4 in. sides | 3/4 in. bottom | 1 in. sides |
| 2-1/8 in. Deep | | | | | | | | |
| BC52171-HV-KIT | 33.6 | - | yes | 6 | - | 2 | - | - |
| BC52171-KSSXHVKIT | 33.6 | "SSX" | yes | 6 | - | 2 | - | - |
| CI52171-1 | 30.0 | - | yes | - | 4 | - | 2 | 4 |
| CI52171-1-SSX-1 | 21.0 | "SSX" | yes | - | 4 | - | 2 | 2 |
| BC52171-K | 30.0 | - | yes | 10 | 4 | 6 | 2 | - |
| CI52171-KSB | 30.0 | "SB" | yes | 8 | 4 | 4 | 2 | - |
| BC52171-KSSX | 30.0 | "SSX" | yes | 7 | 4 | 3 | 2 | - |
| CI52171-KSSX-1 | 30.0 | "SSX" | yes | 7 | 4 | 3 | 2 | - |
| BC53171-K | 30.0 | - | - | 10 | - | 6 | - | - |

347 Volt Boxes

Boxes and Kits



BC52171-HV-KIT



BC52171-KSSXHVKIT



CI1204-1-HV



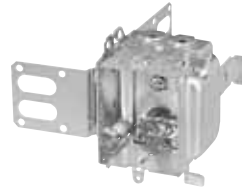
CI1204-2-HV



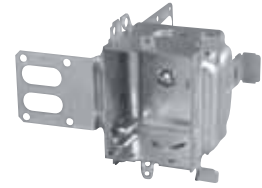
CI1204-LA-HV



CI1204-3/4-SSX-HV



CI1204-LSSAX-HV



CI1204-SSX-HV



| Cat. No. | Volume (Cu. in.) | Number of Gangs | Dimensions H x W x D (in.) | Features | | | Knockouts 1/2 in. ends | Pryouts ends |
|----------------------------------|------------------|-----------------|-------------------------------|----------|--------|----------|---------------------------|-----------------|
| | | | | Ears | Clamps | Brackets | | |
| 2-1/2 in. Deep — Gangable | | | | | | | | |
| BC52171-HV-KIT | 33,6 | 1 | 4 x 4 x 2-1/8 | - | - | - | 2 | - |
| BC52171-KSSXHVKIT | 33,6 | 1 | 4 x 4 x 2-1/8 | - | - | - | 2 | - |
| CI1204-1-HV | 16,0 | 1 | 3 x 2-1/4 x 2-1/2 | recessed | - | - | 2 | - |
| CI1204-2-HV | 32,0 | 2 | 3 x 4-1/2 x 2-1/2 | recessed | - | - | 4 | - |
| CI1204-3/4-SSX-HV | 16,0 | 1 | 3 x 2 x 2-1/2 | - | - | “SSX” | - | - |
| CI1204-LA-HV | 16,0 | 1 | 3 x 2-1/4 x 2-1/2 | flush | BX | - | - | 4 |
| CI1204-LSSAX-HV | 16,0 | 1 | 3 x 2-1/4 x 2-1/2 | - | BX | “SSX” | - | 4 |
| CI1204-SSX-HV | 16,0 | 1 | 3 x 2-1/4 x 2-1/2 | - | - | “SSX” | 2 | - |
| CI1204-SS1X-HV | 16,0 | 1 | 3 x 2-1/4 x 2-1/2 | - | - | “SSX” | 2 | - |
| CI1204-LSSAX-HV-1 | 16,0 | 1 | 3 x 2-1/4 x 2-1/2 | - | BX | “SSX” | - | 4 |

Note: All HV boxes have tapped holes spaced 3-17/32 in. to accommodate 347 Volt switches
 CI1204-2-HV includes CIHVP partition
 On multigang boxes lateral spacing 2-1/4 in.
 When ganged, CIHVP partition must be installed between spacers