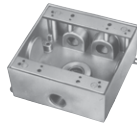


FS Boxes and Covers

Two and three Gang



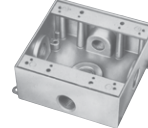
S400CN/ 2IH3



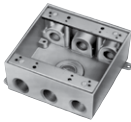
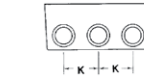
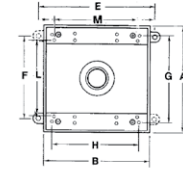
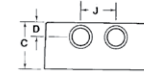
2IH4



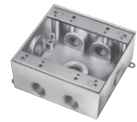
S401CN/ S402CN/ 2IH5-1



2IH5S2



2IH7



2IH7S2



2IHD5



3IHD7

Cat. No.	No. of Hubs	Hub Size (in.)	A (in.)	B (in.)	C (in.)	D (in.)	E (in.)	F (in.)	G (in.)	H (in.)	J (in.)	K (in.)	L (in.)	M (in.)	Cu. (in.)
Two Gang Outlet Boxes – 2 in. Deep (Cast Aluminum)															
S400CN	3	1/2	4-9/16	4-5/8	2-11/16	5/8	5	3-1/2	3-11/16	3-3/4	-	-	-	-	-
2IH3-1		1/2													
2IH3-2		3/4													
2IH4-1	4	1/2													
2IH4-2		3/4													
S401CN		1/2													
S402CN	5	3/4													
2IH5-1		1/2													
2IH5S2-1		1/2													
2IH5S2-2	3/4														
2IH7-1	7	1/2													
2IH7-2		3/4													
2IH7S2-1		1/2													
2IH7S2-2		3/4													
		1-1/2	1-1/2												
														31.8	
															30.3
															32.0



Cat. No.	No. of Hubs	Hub Size (in.)	A (in.)	B (in.)	C (in.)	D (in.)	E (in.)	F (in.)	G (in.)	H (in.)	J (in.)	L (in.)	M (in.)	Cu. (in.)	
Two Gang Outlet Boxes – 2-5/8 in. Deep (Cast Aluminum)															
2IHD5-1	5	1/2	4-9/16	4-5/8	2-11/16	5/8	5	3-1/2	3-11/16	3-3/4	1-1/2	3-1/4	3-9/16	40.3	
2IHD5-2		3/4													
2IHD5-3*		1													



Cat. No.	No. of Hubs	Hub Size (in.)	A (in.)	B (in.)	C (in.)	D (in.)	E (in.)	F (in.)	G (in.)	H (in.)	K (in.)	L (in.)	M (in.)	Cu. (in.)	
Three Gang Outlet Boxes - 2-5/8 in. Deep (Cast Aluminum)															
3IHD7-2*	7	3/4	4-9/16	6-7/16	2-11/16	1-3/16	6-13/16	3-1/2	3-1/4	5-5/8	1-1/2	3-1/4	3-9/16	54.8	
3IHD7-3*		1													

* Not CSA approved
Raintight when used with appropriate Red Dot® covers