

Copper Mechanical Connectors

Type BTC — Copper Single Conductor, One-Hole Mount (Offset Tang)

- CSA Certified and UL Listed, tested for copper conductors
- Made of electrolytic seamless copper
- Screws are zinc plated steel



Fig. 1

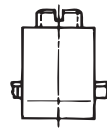


Fig. 2

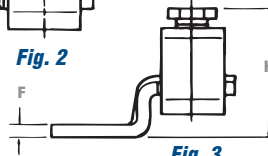
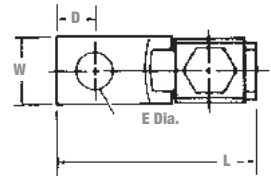


Fig. 3



Cat. No.	Fig. No.	Conductor Range		Dimensions (in.)					
		Max.	Min.	L	W	H	F	E	D
BTC1014*	1	10 AWG	14 AWG	1	5/16	43/64	5/64	5/32	3/16
BTC0614	2	6 str.		1-3/32	3/8	25/32		13/64	7/32
BTC0208		2 str.	8 str.	1-15/32	1/2	27/32	3/32	17/64	1/4
BTC1102	3	1/0 str.	2 str.	1-25/32	5/8	1-13/32	1/8	13/32	7/16
BTC3104		3/0 str.	4 str.	2-3/64	3/4	1-9/16			
BTC4102		4/0 str.	2 str.	2-9/16	1	1-61/64		11/32	1/2
BTC3511		350 kcmil	1/0 str.	3-1/4		2-1/2	3/16	13/32	5/8
BTC5011		500 kcmil		4-1/4	1-1/2	2-21/32			15/16
BTC9960		1000 kcmil	600 kcmil	4-3/4	2	3-9/16	1/4	17/32	1-1/8

* CSA not applicable.