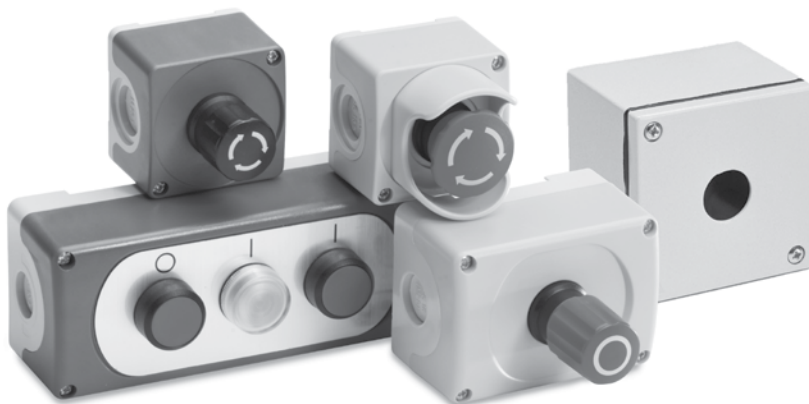


Enclosures and assembled Stations


7

Large plastic enclosure (Modular & Compact)

This enclosure can fit both Modular and Compact operators with the unique possibility to mount up to 5 contact blocks assigned to one operator.

Protection degree:

IP 66

UL Type 1, 3R, 4, 4X, 12, 13

Compact plastic enclosure

The compact enclosure is one of the smallest on the market intended for compact operators.

Protection degree:

IP 66, 67, 69K

UL Type 1, 3R, 4, 4X, 12, 13

Assembled stations

We can also offer some of the most common assembled stations as a standard with combination from both Modular and Compact Range.

Plastic enclosures Modular Range, 22mm

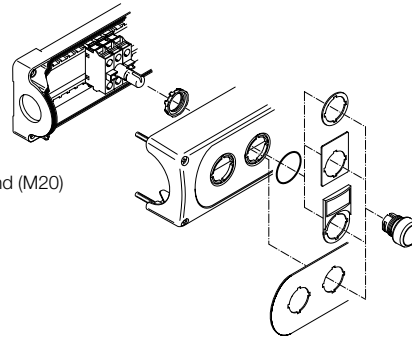


Empty enclosures
1-seat - 6-seat

Description		Catalog number	Weight oz.
Empty plastic enclosures with stainless steel screws			
1-seat	Dark grey/light grey	MEP1-0	5.3
1-seat	Yellow/light grey	MEPY1-0	5.3
2-seat	Dark grey/light grey	MEP2-0	6.0
3-seat	Dark grey/light grey	MEP3-0	7.1
4-seat	Dark grey/light grey	MEP4-0	8.1
6-seat	Dark grey/light grey	MEP6-0	11

When ordering

- Select operators
- Note: Select contact blocks and lamp blocks for rear mounting
- Accessories
 - N.B. One spacer per operator has to be ordered if legend plate is not used. (for rear mounted pilot devices)
- Holes for cable glands
 - 1-seat to 3-seat enclosures: M20 and Pg 13.5/Pg16 and (M20)
 - 4-seat and 6-seat enclosures: M25/Pg 16 and (M20)



UL Listed applications: For end of line use only.