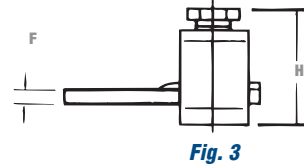
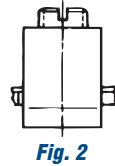
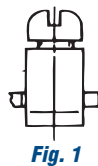
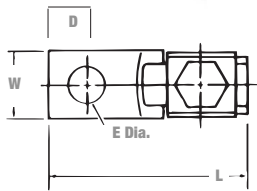




## Copper Mechanical Connectors

### Type STC — Copper Single Conductor, One-Hole Mount (Straight Tang)

- Uniquely designed pressure bar and notched v-bottom collar provide a vise-like grip between conductor and terminal
- CSA Certified and UL Listed for copper conductors
- Made of electrolytic seamless coppers
- Screws are zinc plated steel



Cat. No.	Fig. No.	Conductor Range		Dimensions (in.)					
		Max.	Min.	L	W	H	F	E	D
STC1014*	1	10 AWG		1	5/16	1/2		5/32	3/16
STC0614	2	6 str.	14 AWG	1-9/64	3/8	11/16	5/64	13/64	7/32
STC0414		4 str.		1-1/4					
STC0208	3	2 str.	8 str.	1-15/32	1/2	31/32	3/32	17/64	1/7
STC1102		1/0 str.	2 str.	1-15/16		5/8			1-1/4
STC3104		3/0 str.	4 str.	2-1/4	3/4	1-9/16	1/8	13/32	
STC4102		4/0 str.	2 str.	2-3/8	1	1-21/32	11/32	1/2	
STC3511		350 kcmil	1/0 str.	3-1/4		1-5/8			3/16
STC5011		500 kcmil		3-7/8	1-1/2	1-13/16	15/16		
STC9960	1000 kcmil	600 kcmil	5	2	2-5/8	1/4		17/32	1-1/8

\* CSA not applicable.