



## Colour-Coded Compression Connectors

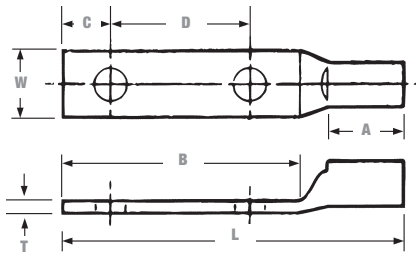
### Type CTL — Copper Lugs, Two-Hole Mount, Short Barrel

#### Copper Compression Connectors

- For use with copper conductors: AWG stranded, flexible cable, welding cable or portable cord
- Specially designed for industrial and building applications
- Made of high-conductivity seamless copper tubing
- Tin-plated for corrosion resistance
- Specially chamfered barrel for ease of installation
- Colour-coded for matching die identification
- Can be used for medium voltage application up to 35 kV provided proper insulation techniques are used
- CSA Certified and UL Listed for AWG conductors when installed with Blackburn®, Burndy, T&B® or Anderson tools, as specified by CSA
- Comply with Subpart 111.60-17 of Federal Register's Coast Guard Electrical Engineering Rules and Regulations

#### Short Barrel Connectors

- Short barrel connectors designed for regular duty applications
- Ideal for confined areas



Cat. No.	Conductor Size (Cu)	Stud Size (in.)	Dimensions (in.)							Colour Code
			A	B	C	D	L	W	T	
CTL6-214	6 str.	1/4	1/2	1-1/4	1/4	5/8	1-31/32	13/32	1/16	Blue
CTL4-214	4 str.	1/4	1/2	1-1/4	1/4	5/8	2-1/32	1/2	3/32	Grey
CTL2-2516	2 + 3 str.	5/16	19/32	1-5/8	3/8	3/4	2-15/32	9/16	3/32	Brown
CTL1-2516	1 str.	5/16	19/32	1-3/4	3/8	7/8	2-19/32	21/32	3/32	Green
CTL10-2516	1/0 str.	5/16	11/16	1-3/4	3/8	7/8	2-11/16	3/4	1/8	Pink
CTL202	2/0 str.	1/2	13/16	2-13/16	1/2	1-3/4	3-13/16	13/16	1/8	Black
CTL302	3/0 str.	1/2	25/32	2-13/16	1/2	1-3/4	3-15/16	15/16	1/8	Orange
CTL402	4/0 str.	1/2	15/16	3	1/2	1-3/4	4-1/4	1-3/32	1/8	Purple
CTL2502	250 kcmil	1/2	1-1/32	3	1/2	1-3/4	4-11/32	1-1/8	5/32	Yellow
CTL3002	300 kcmil	1/2	1-1/32	3	1/2	1-3/4	4-17/32	1-3/16	5/32	White
CTL3502	350 kcmil	1/2	1-1/32	3	1/2	1-3/4	4-17/32	1-11/32	5/32	Red
CTL4002	400 kcmil	1/2	1-11/32	3	1/2	1-3/4	4-15/16	1-13/32	5/32	Blue
CTL5002	500 kcmil	1/2	1-3/8	3	1/2	1-3/4	5	1-17/32	7/32	Brown
CTL6002-38	600 kcmil	3/8	1-17/32	1-29/32	3/8	1-3/4	5-1/8	1-23/32	7/32	Green
CTL6002-12		1/2	1-17/32	3	1/2	1-3/4	5-1/8	1-23/32	7/32	Green
CTL7502	750 kcmil	1/2	1-1/2	3	1/2	1-3/4	5-7/32	1-29/32	1/4	Black
CTL10002	1000 kcmil	1/2	1-3/4	3	1/2	1-3/4	5-7/16	2-1/4	9/32	-

See Section E for more tool and die information.

Blackburn and T&B are registered trademarks of Thomas & Betts Corporation. All other trademarks are the property of their respective owners.