

PIN & SLEEVE DEVICES



Take a closer look at fast-installing Pin & Sleeve products that work for you.

There's no better protection against moisture and industrial contaminants than P&S IEC Pin & Sleeve products. With spring-loaded covers, locking rings, and neoprene gaskets, everything from water to dirt is completely shut out of the electrical system — even if the connection is accidentally submerged!

All P&S Watertight Pin & Sleeve plugs, connectors, receptacles, and inlets bring you the features to enhance versatility, reliability, and safety. For example, North American products come completely ready to wire, for quick, simple installation. And all feature impact- and chemical-resistant thermoplastic construction. Shrouded, nickel-plated, solid-brass pins provide corrosion protection and excellent conductivity. And an exclusive, hinged cord grip eliminates loose parts that get lost.

With a complete range of choices rated from 20 to 100 amps, you'll find a Legrand works-for-you solution for every Pin & Sleeve application in and around your plant.

PIN & SLEEVE DEVICES

Ratings, compliances visible on strap for fast, long-lasting I.D.

- A. Arrives ready to wire, with cord grip open** and cable-ready; terminal screws come backed out and ready to wire; front and back body require no disassembly prior to assembly.
- B. Nylon construction for high-impact** and corrosion resistance.

C. Nickel-plated brass pins provide extracorrosion resistance without sacrificing electrical conductivity.

D. Locking ring with an integral neoprene gasket provides watertight seal when plug and connector/receptacle are mated.

E. Natural-rubber grommets provide watertight protection at cable entry.

F. Combination-head screws for added convenience and quick installation.

G. Revolutionary, hinged cord grip for durable performance and ease of installation.

H. Cover with integral neoprene gasket provides watertight seal.



P&S Pin & Sleeve products provide installation ease, enduring performance in harsh conditions, and guaranteed IEC 309 compatibility.

PIN & SLEEVE DEVICES

IP44
Suitability

North American Splashproof Devices Ordering Information

North American Product Offering

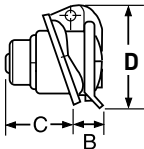
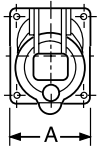
UL S&P	POLES & WIRES	CONFIGURATION		VOLTAGE/ COLOR CODING	SPLASHPROOF				BACK BOXES		NON-METALLIC BACK BOX		
		RECEP./ CONN.	PLUG/ INLET		RECEPTACLE	PLUG	CONNECTOR	INLET*	ANGLED BOX	INLET**	RECEPTACLE		
20 AMPS													
	2P3W			125			PS320P4S	PS320C4S			PSBB201W	PSBB201SP	PSBBN201W
	2P3W			250	PS320R6S		PS320P6S	PS320C6S	PS320B6S		PSBB201W	PSBB201SP	PSBBN201W
	2P3W			277	PS320R5S		PS320P5S				PSBB201W	PSBB201SP	PSBBN201W
	3P4W			125/250	PS420R12S		PS420P12S	PS420C12S			PSBB202W	PSBB201SP	PSBBN202W
	3P4W			3ø 250	PS420R9S		PS420P9S	PS420C9S	PS420B9S		PSBB202W	PSBB201SP	PSBBN202W
	3P4W			3ø 480	PS420R7S		PS420P7S	PS420C7S	PS420B7S		PSBB202W	PSBB201SP	PSBBN202W
	3P4W			3ø 600	PS420R5S				PS420B5S		PSBB202W	PSBB201SP	PSBBN202W
	4P5W			3øY 120/208	PS520R9S			PS520C9S	PS520B9S		PSBB202W	PSBB201SP	PSBBN202W
	4P5W			3øY 277/480				PS520C7S	PS520B7S		PSBB202W	PSBB201SP	PSBBN202W
	4P5W			3øY 347/600	PS520R5S			PS520C5S	PS520B5S		PSBB202W	PSBB201SP	PSBBN202W
30 AMPS													
	2P3W			125	PS330R4S		PS330P4S	PS330C4S	PS330B4S		PSBB301W	PSBB301SP	PSBBN301W
	2P3W			250	PS330R6S		PS330P6S	PS330C6S	PS330B6S		PSBB301W	PSBB301SP	PSBBN301W
	2P3W			480			PS330P7S	PS330C7S	PS330B7S		PSBB301W	PSBB301SP	PSBBN301W
	3P4W			125/250	PS430R12S			PS430C12S	PS430B12S		PSBB301W	PSBB301SP	PSBBN301W
	3P4W			3ø 250	PS430R9S		PS430P9S	PS430C9S	PS430B9S		PSBB301W	PSBB301SP	PSBBN301W
	3P4W			3ø 480	PS430R7S		PS430P7S	PS430C7S	PS430B7S		PSBB301W	PSBB301SP	PSBBN301W
	3P4W			3ø 600	PS430R5S		PS430P5S	PS430C5S	PS430B5S		PSBB301W	PSBB301SP	PSBBN301W
	4P5W			3øY 120/208	PS530R9S		PS530P9S	PS530C9S	PS530B9S		PSBB301W	PSBB301SP	PSBBN301W
	4P5W			3øY 277/480				PS530P7S			PSBB301W	PSBB301SP	PSBBN301W
	4P5W			3øY 347/600	PS530R5S		PS530P5S	PS530C5S	PS530B5S		PSBB301W	PSBB301SP	PSBBN301W
60 AMPS													
	2P3W			250	PS360R6S		PS360P6S	PS360C6S	PS360B6S		PSBB601W	PSBB601W	PSBBN601W
	2P3W			480	PS360R7S		PS360P7S	PS360C7S	PS360B7S		PSBB601W	PSBB601W	PSBBN601W
	3P4W			125/250	PS460R12S		PS460P12S	PS460C12S	PS460B12S		PSBB601W	PSBB601W	PSBBN601W
	3P4W			3ø 250	PS460R9S		PS460P9S	PS460C9S	PS460B9S		PSBB601W	PSBB601W	PSBBN601W
	3P4W			3ø 480	PS460R7S		PS460P7S	PS460C7S	PS460B7S		PSBB601W	PSBB601W	PSBBN601W
	3P4W			3ø 600	PS460R5S		PS460P5S	PS460C5S	PS460B5S		PSBB601W	PSBB601W	PSBBN601W
	4P5W			3øY 120/208	PS560R9S		PS560P9S	PS560C9S	PS560B9S		PSBB601W	PSBB601W	PSBBN601W
	4P5W			3øY 277/480	PS560R7S		PS560P7S	PS560C7S	PS560B7S		PSBB601W	PSBB601W	PSBBN601W
	4P5W			3øY 347/600	PS560R5S		PS560P5S	PS560C5S	PS560B5S		PSBB601W	PSBB601W	PSBBN601W

*Line art for 60 amp only. 20 and 30 amp inlets are angled.
**Line art for 20 and 30 amp only. 60 amp back box is angled.

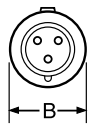
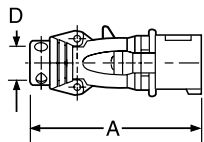
PIN & SLEEVE DEVICES

Splashproof Dimensional Information

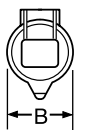
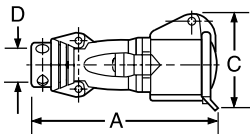
16/20 & 30/32 Amp Splashproof Devices/Dimensional Information



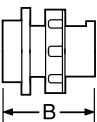
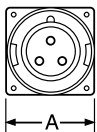
Receptacles



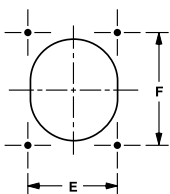
Plugs



Connectors



Inlets



Receptacle/Inlet Drilling Pattern

AMPS	WIRE CONFIGURATIONS	A	B	C	D	E	F
SPLASHPROOF RECEPTACLES							
16/20	2 Pole, 3 Wire	2.50	1.57	1.60	3.10	2.05	2.36
	3 Pole, 4 Wire	2.90	1.57	1.73	3.46	2.36	2.75
	4 Pole, 5 Wire	2.90	1.73	1.73	3.66	2.36	2.75
30/32	2 Pole, 3 Wire	3.30	2.10	1.97	4.06	2.75	3.15
	3 Pole, 4 Wire	3.30	2.10	1.97	4.06	2.75	3.15
	4 Pole, 5 Wire	3.30	2.20	2.05	4.20	2.75	3.15
SPLASHPROOF PLUGS							
16/20	2 Pole, 3 Wire	5.30	2.17		.31-.59		
	3 Pole, 4 Wire	5.50	2.36		.31-.59		
	4 Pole, 5 Wire	6.00	2.60		.39-.71		
30/32	2 Pole, 3 Wire	6.50	2.78		.39-.71		
	3 Pole, 4 Wire	6.50	2.78		.47-.87		
	4 Pole, 5 Wire	6.70	3.03		.47-.87		
SPLASHPROOF CONNECTORS							
16/20	2 Pole, 3 Wire	5.79	2.15	2.91	.31-.59		
	3 Pole, 4 Wire	5.94	2.42	3.19	.31-.59		
	4 Pole, 5 Wire	6.77	2.73	3.54	.39-.71		
30/32	2 Pole, 3 Wire	6.97	2.80	3.66	.39-.71		
	3 Pole, 4 Wire	6.97	2.80	3.66	.47-.87		
	4 Pole, 5 Wire	7.20	3.05	3.94	.47-.87		
SPLASHPROOF INLETS							
16/20	2 Pole, 3 Wire	2.83	3.07			2.44	3.70
	3 Pole, 4 Wire	3.70	3.39			3.27	4.29
	4 Pole, 5 Wire	3.70	3.39			3.27	4.29
30/32	2 Pole, 3 Wire	3.98	4.37			3.54	5.86
	3 Pole, 4 Wire	3.98	4.37			3.54	5.86
	4 Pole, 5 Wire	3.98	4.25			3.54	5.86

60/63 Amp Splashproof Devices/Dimensional Information

AMPS	WIRE CONFIGURATIONS	A	B	C	D	E	F
SPLASHPROOF RECEPTACLES							
60/63	2 Pole, 3 Wire	4.20	3.50	2.76	5.08	3.03	3.35
	3 Pole, 4 Wire	4.20	3.50	2.76	5.08	3.03	3.35
	4 Pole, 5 Wire	4.20	3.50	2.76	5.08	3.03	3.35
SPLASHPROOF PLUGS							
60/63	2 Pole, 3 Wire	10.00	4.02		.63-1.04		
	3 Pole, 4 Wire	10.00	4.02		.73-1.14		
	4 Pole, 5 Wire	10.00	4.02		.80-1.26		
SPLASHPROOF CONNECTORS							
60/63	2 Pole, 3 Wire	10.75	3.78	4.67	.63-1.04		
	3 Pole, 4 Wire	10.75	3.78	4.67	.73-1.14		
	4 Pole, 5 Wire	10.75	3.78	4.67	.80-1.26		
SPLASHPROOF INLETS							
60/63	2 Pole, 3 Wire	4.50	4.25			3.03	3.35
	3 Pole, 4 Wire	4.50	4.25			3.03	3.35
	4 Pole, 5 Wire	4.50	4.25			3.03	3.35

All measurements shown in inches.

PIN & SLEEVE DEVICES

Watertight & Splashproof Material & Performance

Pin & Sleeve Product Specifications

	16/20 AMP	30/32 AMP	60/63 AMP	100/125 AMP
RECEPTACLES				
Housing	Polyamide 6	Polyamide 6	Valox	Valox
Cover	Polyamide 66	Polyamide 66	Valox	Valox
Cover Spring	Stainless Steel	Stainless Steel	Stainless Steel	Stainless Steel
Sealing Gasket†	Neoprene	Neoprene	Neoprene	Neoprene
Mounting Gasket	Neoprene	Neoprene	Neoprene	Neoprene
Contact Carrier	Polyamide 6	Polyamide 6	Polyamide 6	Polyamide 6
Sleeves	Brass w/Nickel Plate**†	Brass w/Nickel Plate**†	Brass w/Nickel Plate	Brass w/Nickel Plate
Terminal Screws	Zinc-Plated Steel	Zinc-Plated Steel	Zinc-Plated Steel	Zinc-Plated Steel
INLETS				
Housing	Polyamide 6	Polyamide 6	Valox	Valox
Mounting Flange	Polyamide 6	Polyamide 6	Valox	Valox
Locking Ring**†	Polyamide 66	Polyamide 66	Valox	Valox
Sealing Gasket†	Neoprene	Neoprene	Neoprene	Neoprene
Mounting Gasket	Neoprene	Neoprene	Neoprene	Neoprene
Contact Carrier	Polyamide 6	Polyamide 6	Polyamide 6	Polyamide 6
Pins	Brass w/Nickel Plate**†	Brass w/Nickel Plate**†	Brass w/Nickel Plate	Brass w/Nickel Plate
Terminal Screws	Zinc-Plated Steel	Zinc-Plated Steel	Zinc-Plated Steel	Zinc-Plated Steel
PLUGS				
Housing	Polyamide 6	Polyamide 6	Valox	Valox
Locking Ring**†	Polyamide 66	Polyamide 66	Valox	Valox
Sealing Gasket†	Neoprene	Neoprene	Neoprene	Neoprene
Housing Gasket	Neoprene	Neoprene	Neoprene	Neoprene
Back Body	Polyamide 6	Polyamide 6	Valox	Valox
Contact Carrier	Polyamide 6	Polyamide 6	Polyamide 6	Polyamide 6
Pins	Brass w/Nickel Plate**†	Brass w/Nickel Plate**†	Brass w/Nickel Plate	Brass w/Nickel Plate
Terminal Screws	Zinc-Plated Steel	Zinc-Plated Steel	Zinc-Plated Steel	Zinc-Plated Steel
Cord Grip	Polyamide 6	Polyamide 6	Polyamide 66	Polyamide 66
Grommet	Natural Rubber	Natural Rubber	Natural Rubber	Natural Rubber
Cord Grip Screws	Stainless Steel	Stainless Steel	Stainless Steel	Stainless Steel
Assembly Screws	Stainless Steel	Stainless Steel	Stainless Steel	Stainless Steel
CONNECTORS				
Housing	Polyamide 6	Polyamide 6	Valox	Valox
Cover	Polyamide 66	Polyamide 66	Valox	Valox
Cover Spring	Stainless Steel	Stainless Steel	Stainless Steel	Stainless Steel
Sealing Gasket†	Neoprene	Neoprene	Neoprene	Neoprene
Housing Gasket	Neoprene	Neoprene	Neoprene	Neoprene
Back Body	Polyamide 6	Polyamide 6	Valox	Valox
Contact Carrier	Polyamide 6	Polyamide 6	Polyamide 6	Polyamide 6
Sleeves	Brass w/Nickel Plate**†	Brass w/Nickel Plate**†	Brass w/Nickel Plate	Brass w/Nickel Plate
Terminal Screws	Zinc-Plated Steel	Zinc-Plated Steel	Zinc-Plated Steel	Zinc-Plated Steel
Cord Grip	Polyamide 6	Polyamide 6	Polyamide 66	Polyamide 66
Grommet	Natural Rubber	Natural Rubber	Natural Rubber	Natural Rubber
Cord Grip Screws	Stainless Steel	Stainless Steel	Stainless Steel	Stainless Steel
Assembly Screws	Stainless Steel	Stainless Steel	Stainless Steel	Stainless Steel
METALLIC BACK BOX				
Housing	Cast Aluminum			
Hub	Cast Iron			
NON-METALLIC BACK BOX				
Housing	Polyamide 6			
Hub				

†Does not apply to splashproof.

*16/20A and 30/32A sleeves and pins on splashproof products are brass only. Splashproof inlets and plugs do not have locking rings.

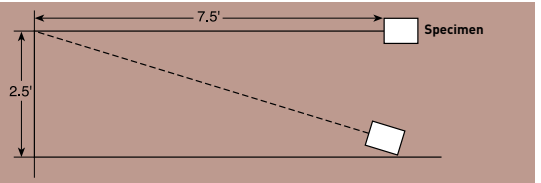
Consult factory for additional details.

PERFORMANCE

Electrical:

Dielectric Voltage Withstand	3000V maximum
Maximum Working Voltage	600V RMS, 60Hz - 400Hz
Current Interrupting	Certified for current interrupting at full-rated current
Temperature Rise	Maximum 30°C temperature rise at full-rated current after 50 cycles of 150% overload (at 0.75 to 0.80 power factor)
Endurance	20 amp: 5000 cycles with full-rated current and voltage 30, 60, 100 amp: 2000 cycles with full-rated current and voltage applied on every other cycle

Mechanical:



Impact Resistance	Device dropped 8 times from a height of 2.5 feet with 7.5 feet of cord attached (per CSA 182.1)
-------------------	---

Cord Grip Retention

	Force, Lbs.**	Torque, Ft.lbs.**
20A	30	0.4
30A	75	0.5
60A	150	1.0
100A	150	1.0

**Applied to minimum recommended cable size.

Cord Accommodation	Round portable service cords Diameters commensurate with the device rating as defined in UL62, CSA C22.2, No. 49, and the harmonized (HAR) European Standard
--------------------	---

Terminal Identification	Identified in accordance with North American convention, UL1682, and IEC 309-1, 309-2, rated for copper conductors only
-------------------------	---

Product Identification	Identification and ratings are labeled on the device housing
------------------------	--

Environmental:

Moisture Resistance	Per IEC 309-1
Flammability	Contact with live parts: V2 or V0 Enclosure: HB or better per UL94
Operating Temperature	+80°C maximum continuous; -50°C minimum without impact
UV Resistance	All enclosure materials are UV stable

PIN & SLEEVE DEVICES

Technical Specifications

Watertight Pin & Sleeve Plugs

20, 30, 60 & 100A

Typical Specifications

- Manufacturer's Identification: Pass & Seymour PS460P7W
- Description: Plug, Power Supply
- Type: 3 Pole, 4 Wire Grounding
- Rating: 60A, 3 Phase 480VAC
- Configuration: IEC 309-2, Clock Position 7, Watertight (IP67)
- 3rd Party Compliance: UL Listed to UL Standard 1682; CSA Certified to CSA 22.2 No. 182.2; UL Classified to IEC 309-1 and IEC 309-2

Watertight Pin & Sleeve Connectors

20, 30, 60 & 100A

Typical Specifications

- Manufacturer's Identification: Pass & Seymour PS460C7W
- Description: Connector, Power Supply
- Type: 3 Pole, 4 Wire Grounding
- Rating: 60A, 3 Phase 480VAC
- Configuration: IEC 309-2, Clock Position 7, Watertight (IP67)
- 3rd Party Compliance: UL Listed to UL Standard 1682; CSA Certified to CSA 22.2 No. 182.2; UL Classified to IEC 309-1 and IEC 309-2

Splashproof Pin & Sleeve Plugs

20, 30 & 60A

Typical Specifications

- Manufacturer's Identification: Pass & Seymour PS460P7S
- Description: Plug, Power Supply
- Type: 3 Pole, 4 Wire Grounding
- Rating: 60A, 3 Phase 480VAC
- Configuration: IEC 309-2, Clock Position 7, Splashproof (IP44)
- 3rd Party Compliance: UL Listed to UL Standard 1682; CSA Certified to CSA 22.2 No. 182.2; UL Classified to IEC 309-1 and IEC 309-2

Splashproof Pin & Sleeve Connectors

20, 30 & 60A

Typical Specifications

- Manufacturer's Identification: Pass & Seymour PS460C7S
- Description: Connector, Power Supply
- Type: 3 Pole, 4 Wire Grounding
- Rating: 60A, 3 Phase 480VAC
- Configuration: IEC 309-2, Clock Position 7, Splashproof (IP44)
- 3rd Party Compliance: UL Listed to UL Standard 1682; CSA Certified to CSA 22.2 No. 182.2; UL Classified to IEC 309-1 and IEC 309-2

PIN & SLEEVE DEVICES

Technical Specifications

IP Suitability Rating IEC Enclosure Classification Designation

IP Suitability Ratings are an international system for classifying the degree of protection provided by enclosures of electrical equipment. The higher the number, the greater the degree of protection; they apply ONLY to properly installed equipment. The numerals stand for the following:

- 1. First Number:** Degree of protection for persons against access to hazardous parts inside the enclosure and/or against solid bodies.
- 2. Second Number:** Degree of protection of equipment inside enclosures against damage from the ingress of water.

IEC Enclosure Classification Designation		
Code Letters	First Number	Second Number
Ingress Protection	Against Ingress of Solid Bodies	Against Ingress of Water with Harmful Effects
IP	0 - Nonprotected	0 - Nonprotected
	1 - ≥ 50 mm diameter	1 - Vertically dripping
	2 - ≥ 12.5 mm diameter	2 - Dripping (15° Tilted)
	3 - ≥ 2.5 mm diameter	3 - Spraying
	4 - ≥ 1.0 mm	4 - Splashing
	5 - Dust-protected	5 - Jetting
	6 - Dusttight	6 - Power jetting
		7 - Temporary immersion
	8 - Continuous immersion	

Note: \geq denotes greater than or equal to. Dimensions in millimeters (mm).

Example: IP44 = Ingress Protection; Solid bodies ≥ 1.0 mm; Splashing

IP44
Suitability

Conversion Chart

Fractions to Decimals to Millimeters

Inches Fraction	Decimal	mm	Inches Fraction	Decimal	mm	Inches Fraction	Decimal	mm	Inches Fraction	Decimal	mm
1/64	0.0156	0.3969	17/64	0.2656	6.7469	33/64	0.5156	13.0969	49/64	0.7656	19.4469
1/32	0.0312	0.7938	9/32	0.2812	7.1438	17/32	0.5312	13.4938	25/32	0.7812	19.8437
3/64	0.0468	1.1906	19/64	0.2968	7.5406	35/64	0.5468	13.8906	51/64	0.7968	20.2406
1/16	0.0625	1.5875	5/16	0.3125	7.9375	9/16	0.5625	14.2875	13/16	0.8125	20.6375
5/64	0.0781	1.9844	21/64	0.3281	8.3344	37/64	0.5781	14.6844	53/64	0.8281	21.0344
3/32	0.0937	2.3812	11/32	0.3437	8.7312	19/32	0.5937	15.0812	27/32	0.8437	21.4312
7/64	0.1093	2.7781	23/64	0.3593	9.1281	39/64	0.6093	15.4781	55/64	0.8593	21.8281
1/8	0.1250	3.1750	3/8	0.3750	9.5250	5/8	0.6250	15.8750	7/8	0.8750	22.2250
9/64	0.1406	3.5719	25/64	0.3906	9.9219	41/64	0.6406	16.2719	57/64	0.8906	22.6219
5/32	0.1562	3.9688	13/32	0.4062	10.3188	21/32	0.6562	16.6688	29/32	0.9062	23.0188
11/64	0.1718	4.3656	27/64	0.4218	10.7156	43/64	0.6718	17.0656	59/64	0.9218	23.4156
3/16	0.1875	4.7625	7/16	0.4375	11.1125	11/16	0.6875	17.4625	15/16	0.9375	23.8125
13/64	0.2031	5.1594	29/64	0.4531	11.5094	45/64	0.7031	17.8594	61/64	0.9531	24.2094
7/32	0.2187	5.5562	15/32	0.4687	11.9062	23/32	0.7187	18.2562	31/32	0.9687	24.6062
15/64	0.2343	5.9531	31/64	0.4843	12.3031	47/64	0.7343	18.6531	63/64	0.9843	25.0031
1/4	0.2500	6.3500	1/2	0.5000	12.7000	3/4	0.7500	19.0500	1	1.0000	25.4000

PIN & SLEEVE DEVICES

Product Selection Guide

North American Splashproof

Amps	Volts	Pg. I-28				Pg. I-34	
		Plug	Receptacle	Connector	Inlet	Metallic Back Box	Non-Metallic Back Box
20	120VAC	PS320P4S		PS320C4S		PSBB201W	PSBBN201W
	240VAC	PS320P6S	PS320R6S	PS320C6S	PS320B6S	PSBB201W	PSBBN201W
	277VAC	PS320P5S	PS320R5S			PSBB201W	PSBBN201W
	120/240VAC	PS420P12S	PS420R12S	PS420C12S		PSBB202W	PSBBN202W
	3ø 240VAC	PS420P9S	PS420R9S	PS420C9S	PS420B9S	PSBB202W	PSBBN202W
	3ø 480VAC	PS420P7S	PS420R7S	PS420C7S	PS420B7S	PSBB202W	PSBBN202W
	3ø 600VAC		PS420R5S		PS420B5S	PSBB202W	PSBBN202W
	3øY 120/208VAC		PS520R9S	PS520C9S	PS520B9S	PSBB202W	PSBBN202W
	3øY 277/480VAC			PS520C7S	PS520B7S	PSBB202W	PSBBN202W
	3øY 347/600VAC		PS520R5S	PS520C5S	PS520B5S	PSBB202W	PSBBN202W
30	120VAC	PS330P4S	PS330R4S	PS330C4S	PS330B4S	PSBB301W	PSBBN301W
	240VAC	PS330P6S	PS330R6S	PS330C6S	PS330B6S	PSBB301W	PSBBN301W
	480VAC	PS330P7S		PS330C7S	PS330B7S	PSBB301W	PSBBN301W
	120/240VAC		PS430R12S	PS430C12S	PS430B12S	PSBB301W	PSBBN301W
	3ø 240VAC	PS430P9S	PS430R9S	PS430C9S	PS430B9S	PSBB301W	PSBBN301W
	3ø 480VAC	PS430P7S	PS430R7S	PS430C7S	PS430B7S	PSBB301W	PSBBN301W
	3ø 600VAC	PS430P5S	PS430R5S	PS430C5S	PS430B5S	PSBB301W	PSBBN301W
	3øY 120/208VAC	PS530P9S	PS530R9S	PS530C9S	PS530B9S	PSBB301W	PSBBN301W
	3øY 277/480VAC	PS530P7S			PS530B7S	PSBB301W	PSBBN301W
	3øY 347/600VAC	PS530P5S	PS530R5S	PS530C5S	PS530B5S	PSBB301W	PSBBN301W
60	240VAC	PS360P6S	PS360R6S	PS360C6S	PS360B6S	PSBB601W	PSBBN601W
	480VAC	PS360P7S	PS360R7S	PS360C7S	PS360B7S	PSBB601W	PSBBN601W
	120/240VAC	PS460P12S	PS460R12S	PS460C12S	PS460B12S	PSBB601W	PSBBN601W
	3ø 240VAC	PS460P9S	PS460R9S	PS460C9S	PS460B9S	PSBB601W	PSBBN601W
	3ø 480VAC	PS460P7S	PS460R7S	PS460C7S	PS460B7S	PSBB601W	PSBBN601W
	3ø 600VAC	PS460P5S	PS460R5S	PS460C5S	PS460B5S	PSBB601W	PSBBN601W
	3øY 120/208VAC	PS560P9S	PS560R9S	PS560C9S	PS560B9S	PSBB601W	PSBBN601W
	3øY 277/480VAC	PS560P7S	PS560R7S	PS560C7S	PS560B7S	PSBB601W	PSBBN601W
	3øY 347/600VAC	PS560P5S	PS560R5S	PS560C5S	PS560B5S	PSBB601W	PSBBN601W