

Type P1 Panelboards

Lug Kits – Main or Feed-Thru

Amp Rating	Material	Wire Range	Service	Catalog No.
250	Al	(1) #6 AWG - 350 Kcmil (Cu or Al)	1 Phase	MLKA1
		(1) #6 AWG - 350 Kcmil (Cu or Al)	3 Phase	MLKA3
	Cu	(1) #6 AWG - 350 Kcmil (Cu or Al)	1 Phase	MLKC1
		(1) #6 AWG - 350 Kcmil (Cu or Al)	3 Phase	MLKC3
400	Al	(2) 3/0 AWG - 250 Kcmil / (1) 600 Kcmil	1 Phase	4MLKA1
		(2) 3/0 AWG - 250 Kcmil / (1) 600 Kcmil	3 Phase	4MLKA3
	Cu	(2) 3/0 AWG - 250 Kcmil / (1) 600 Kcmil	1 Phase	4MLKC1
		(2) 3/0 AWG - 250 Kcmil / (1) 600 Kcmil	3 Phase	4MLKC3

Miscellaneous Replacement Parts (continued)

Catalog No.	Description
12-A1801-1	4'x4' Filler Plate for Main & Feedthru
FPLK2	2 Locks with Key
JCK24	24 Trim Screws & Clips
10FLHx2	BL Lineside Screws - 1 Bag of 200

Copper Neutral Lug Kits – 250A

No. of Circuits	Description	Catalog No.
18	2 Branch Neutral Strips, 1 Main Neutral Lug, Hardware	CNLK18
30	2 Branch Neutral Strips, 1 Main Neutral Lug, Hardware	CNLK30
42	2 Branch Neutral Strips, 1 Main Neutral Lug, Hardware	CNLK42

200% Neutral Lug Kits – 250A

No. of Circuits	Description	Catalog No.
18	2 Branch Neutral Strips, 2 Main Neutral Lug, Hardware	2NLK18
30	2 Branch Neutral Strips, 2 Main Neutral Lug, Hardware	2NLK30
42	2 Branch Neutral Strips, 2 Main Neutral Lug, Hardware	2NLK42

200% Neutral Lug Kits – 400A

No. of Circuits	Description	Catalog No.
18	2 Branch Neutral Strips, 4 Main Neutral Lug, Hardware	42NLK18
30	2 Branch Neutral Strips, 4 Main Neutral Lug, Hardware	42NLK30
42	2 Branch Neutral Strips, 4 Main Neutral Lug, Hardware	42NLK42

Miscellaneous Replacement Parts

Catalog No.	Description
EGK	Al Ground Bus 44 Connections
BK1	Bonding Kit (250A Max.)
BK4	Bonding Kit (400A Max.)
IMK1	Interior Adjusting Kit
MCHK	Metallic Directory Card Holder
NBK03	Number Strips 1-42
11-1824-01	Directory Card Holder
12-1110-01	Directory Card
11-1056-01	NEMA Instruction Book
MHKP1	Truck Kit for P1

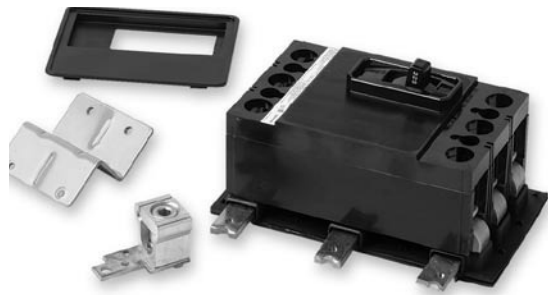


Distributor Stock Panelboards

SELECTION

Type P1 Panelboards

Breaker Mounting Kits – Main or Subfeed (Breaker not included)

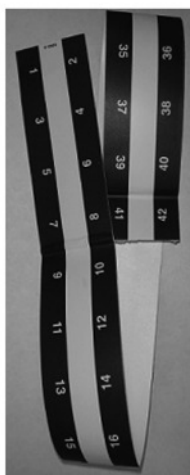


MBKQJ3
(Breaker not included)

Amp Rating	Main	Sub-feed	Breaker Frames	Service	Catalog No.
100	Yes	Yes	BL, BLH, HBL	1 Phase	MBKBL1
				3 Phase	MBKBL3
100	Yes	Yes	BQD6	1 Phase	MBKBC1
				3 Phase	MBKBC3
125	Yes	Yes	ED2, ED4, ED6, HED4	1 Phase	MBKED1
				3 Phase	MBKED3
225	Yes	Yes	QJ2, QJH2, QJ2-H	1 Phase	MBKQJ1
				3 Phase	MBKQJ3
250	Yes	Yes	FXD6, FD6, HFD6	1 Phase	MBKFD1
				3 Phase	MBKFD3
400	Yes	No	JD6, JXD6, HJD6, HHJD6	1 Phase	MBKJD1
				3 Phase	MBKJD3



MBKFD3
(Breaker not included)



NBK03 **NBK03-UL**
Both number strips are supplied in P1

1	8	15	22	29	36
2	9	16	23	30	37
3	10	17	24	31	38
4	11	18	25	32	39
5	12	19	26	33	40
6	13	20	27	34	41
7	14	21	28	35	42

Miscellaneous Accessories

Catalog No.	Description
NBK04	Number Strips 43-84
NBK05	Number Strips 85-126
NBK06	Number Strips 127-168
ECGK	Cu Ground Bus 44 Connections
IGK	Insulated Al Ground Bus
ICGK	Insulated Cu Ground Bus
EWK1	End-Wall Kit with Knockouts (20"W x 5.75" DP)
QF3 - UL	Filler Plate
SDKN	Dripshield Kit (20"W x 5.75" DP)