



CADDY® ROD LOCK

The CADDY® ROD LOCK family of products allows contractors to prefabricate complex assemblies at ground level or offsite, and then easily lift and lock them into place by pushing the threaded rod supports into the CADDY ROD LOCK device. This ingenious technology works with threaded rod with burrs or imperfections, helping to eliminate clean-up time or the need to replace damaged threaded rod.

The most unique feature of the system is its breakthrough “push-to-install” design, which dramatically reduces the installation time of threaded rod support structures when compared to conventional fasteners. Simply speaking – CADDY ROD LOCK is revolutionizing how contractors support conduit, cable tray, lights, ductwork and pipe by helping to make installations faster, easier and more secure.



BUILD

Assemble on the ground or off-site



LIFT

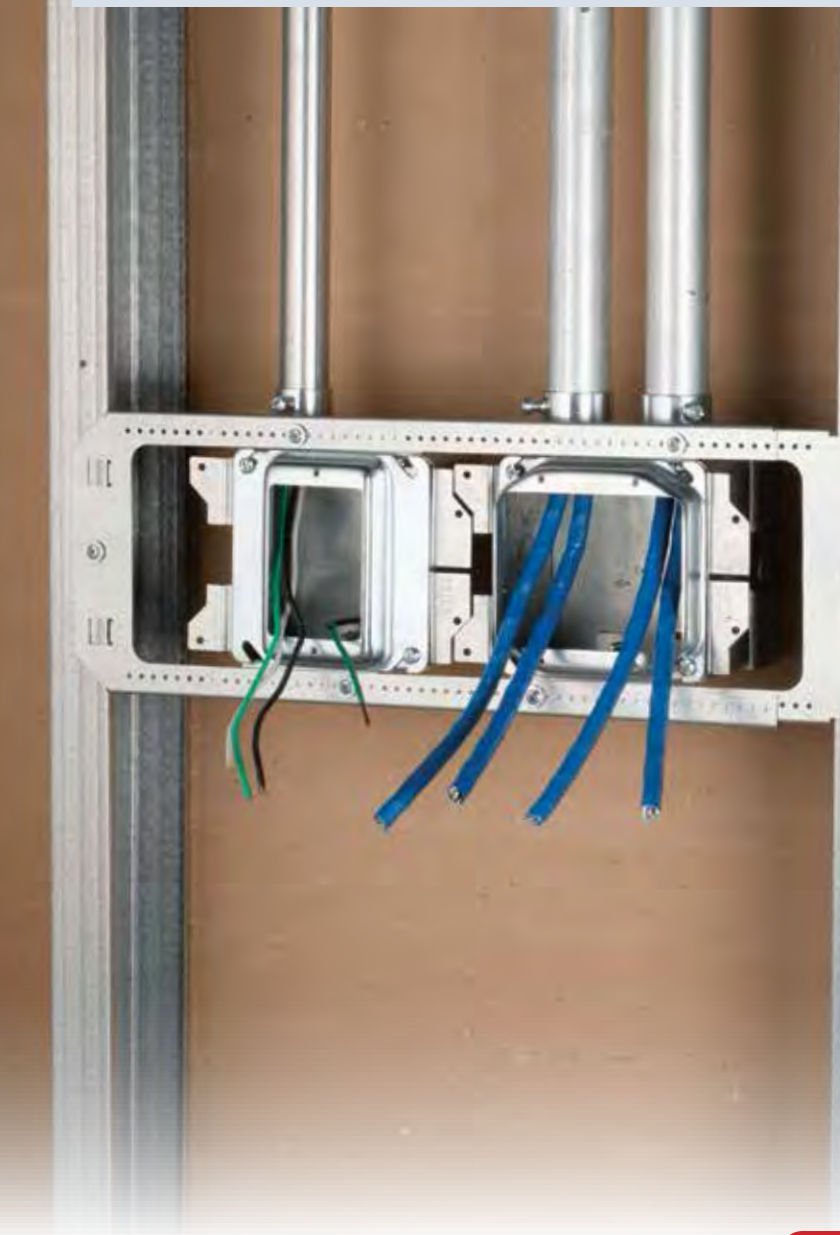
Raise assembly to ceiling



DONE

Level, tighten lock nut

CADDY® ALL-IN-ONE Electrical Assemblies

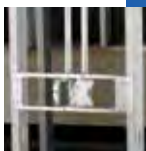


CADDY® ALL-IN-ONE Electrical Assemblies

CADDY® ALL-IN-ONE Between-Stud Assemblies

CADDY® ALL-IN-ONE Between-Stud Without Mud Ring, Single Box

- Provides the flexibility to add a mud ring for non-standard drywall thicknesses
- Box remains fixed in place when mud ring is removed
- Includes two screws to lock box in position
- Pre-bent tabs on support bracket help to quickly square assembly to stud
- Center marks provide easy height positioning
- Includes multiple 1/2" and 3/4" knockouts on each side of the box
- Works with standard US and Canadian mud rings
- Made in the USA




Patent No: 8,598,454

Material: Steel

Finish: Pregalvanized

Knockout Sizes: (8) 1/2"; 3/4", (3) 1/2"



Part Number	Description	
A1BF0G	w/Ground, 3 5/8"	5 pc
A1BF0GTC (Canada)	w/Ground, 3 5/8"	5 pc
A1BF0GS	w/Ground, 2 1/2"	5 pc

Ground wire pigtail is 8".

24" stud spacing requires use of three mounting screws.

Use only with CADDY® ALL-IN-ONE box assemblies.

