



## CADDY® ROD LOCK

The CADDY® ROD LOCK family of products allows contractors to prefabricate complex assemblies at ground level or offsite, and then easily lift and lock them into place by pushing the threaded rod supports into the CADDY ROD LOCK device. This ingenious technology works with threaded rod with burrs or imperfections, helping to eliminate clean-up time or the need to replace damaged threaded rod.

The most unique feature of the system is its breakthrough “push-to-install” design, which dramatically reduces the installation time of threaded rod support structures when compared to conventional fasteners. Simply speaking – CADDY ROD LOCK is revolutionizing how contractors support conduit, cable tray, lights, ductwork and pipe by helping to make installations faster, easier and more secure.



### BUILD

Assemble on the ground or off-site



### LIFT

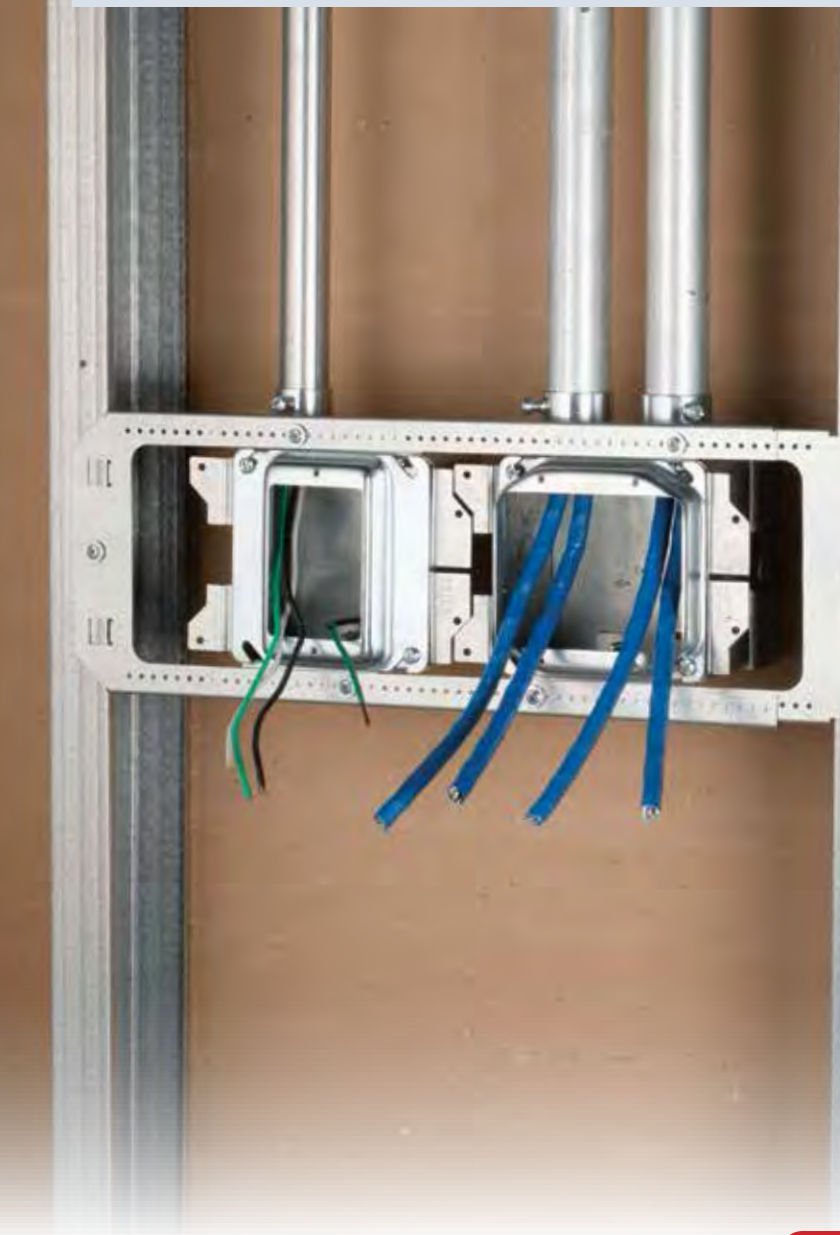
Raise assembly to ceiling



### DONE

Level, tighten lock nut

# CADDY® ALL-IN-ONE Electrical Assemblies

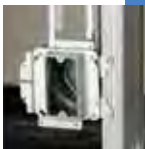


# CADDY® ALL-IN-ONE Electrical Assemblies

## CADDY® ALL-IN-ONE Stud-Mounted Assemblies

### CADDY® ALL-IN-ONE Stud-Mounted With Removable Mud Ring

- Removable mud ring provides front access to the interior of the box
- Box remains fixed in place when mud ring is removed
- Includes multiple knockouts on each side of the box
- Assemblies keyed for precise alignment when installed on both sides of a stud
- Made in the USA



Patent No: 8,598,454

Material: Steel  
Finish: Pregalvanized



| Part Number                                      | Description                              |        |
|--|--|--------|
| Knockout Sizes: (5) 1/2"; 3/4", (1) 1/2", (3) 1" |  |        |
| A1SD1NS  | 1 Gang, No Ground, 5/8" Drywall, 2 1/2"  | 20 pc  |
| A1SD1N   | 1 Gang, No Ground, 5/8" Drywall, 3 5/8"  | 20 pc  |
| Knockout Sizes: (8) 1/2"; 3/4"                   |  |        |
| A1SF1GS  | 1 Gang, w/Ground, 5/8" Drywall, 2 1/2"   | 20 pc  |
| A1SF1G   | 1 Gang, w/Ground, 5/8" Drywall, 3 5/8"   | 20 pc  |
| A1SF1GSP250                                      | 1 Gang, w/Ground, 5/8" Drywall, 3 5/8"   | 250 pc |
| A1SF3G   | 1 Gang, w/Ground, 1 1/4" Drywall, 3 5/8" | 20 pc  |
| A1SF1GSBUSP250                                   | 1 Gang, w/Ground, 5/8" Drywall, 2 1/2"   | 250 pc |
| A1SF1GBUSP250                                    | 1 Gang, w/Ground, 5/8" Drywall, 3 5/8"   | 250 pc |
| A1SF2GS  | 2 Gang, w/Ground, 5/8" Drywall, 2 1/2"   | 20 pc  |
| A1SF2G   | 2 Gang, w/Ground, 5/8" Drywall, 3 5/8"   | 20 pc  |
| A1SF4G   | 2 Gang, w/Ground, 1 1/4" Drywall, 3 5/8" | 20 pc  |

Ground wire pigtail is 8".