



CADDY® ROD LOCK

The CADDY® ROD LOCK family of products allows contractors to prefabricate complex assemblies at ground level or offsite, and then easily lift and lock them into place by pushing the threaded rod supports into the CADDY ROD LOCK device. This ingenious technology works with threaded rod with burrs or imperfections, helping to eliminate clean-up time or the need to replace damaged threaded rod.

The most unique feature of the system is its breakthrough “push-to-install” design, which dramatically reduces the installation time of threaded rod support structures when compared to conventional fasteners. Simply speaking – CADDY ROD LOCK is revolutionizing how contractors support conduit, cable tray, lights, ductwork and pipe by helping to make installations faster, easier and more secure.



BUILD

Assemble on the ground or off-site



LIFT

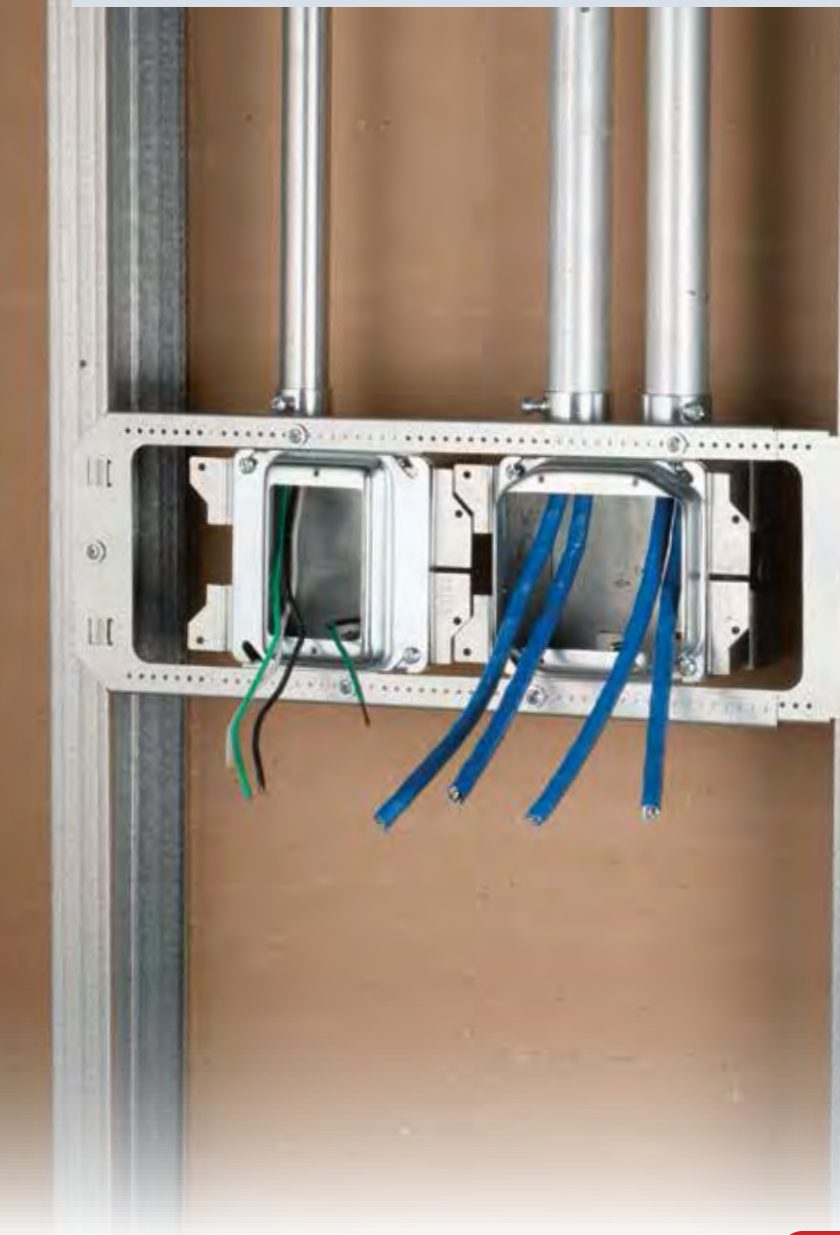
Raise assembly to ceiling



DONE

Level, tighten lock nut

CADDY® ALL-IN-ONE Electrical Assemblies



CADDY® ALL-IN-ONE Electrical Assemblies

CADDY® ALL-IN-ONE Floor-Mounted Assemblies

CADDY® ALL-IN-ONE Floor-Mounted With Removable Mud Ring

- Preset to a finish height of 18" from the floor (adjustable to 12" or 15")
- Removable mud ring provides front access to the interior of the box
- Box remains fixed in place when mud ring is removed
- Integrated first means of support accepts conduit or MC/AC cable
- Accommodates additional CADDY ALL-IN-ONE box assemblies, support brackets and low-voltage mounting plates
- Includes multiple 1/2" and 3/4" knockouts on each side of the box
- Made in the USA



Patent Pending

Material: Steel


Finish: Pregalvanized

EMT Conduit Size: 1/2", 3/4"

MC/AC Cable Size: 14-2 to 12-3

Knockout Sizes: (8) 1/2"; 3/4", (3) 1/2"



Part Number	Description	
A1FF1GS	1 Gang, w/Ground, 5/8" Drywall, 2 1/2"	5 pc
A1FF1G	1 Gang, w/Ground, 5/8" Drywall, 3 5/8"	5 pc
A1FF3G	1 Gang, w/Ground, 1 1/4" Drywall, 3 5/8"	5 pc
A1FF2GS	2 Gang, w/Ground, 5/8" Drywall, 2 1/2"	5 pc
A1FF2G	2 Gang, w/Ground, 5/8" Drywall, 3 5/8"	5 pc
A1FF4G	2 Gang, w/Ground, 1 1/4" Drywall, 3 5/8"	5 pc

Ground wire pigtail is 8".

