

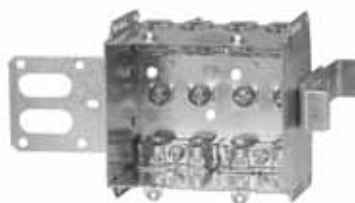
## Device Boxes

### Armoured and Nonmetallic Sheathed Cable Clamps



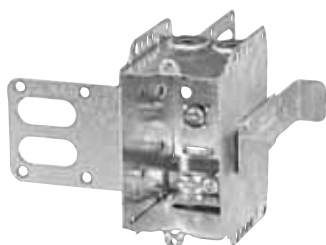
**CI2104-LSSA1X-1**

“Wraparound” bracket for 2-1/2 in. and 3-5/8 in. steel studs. With integral support bracket. Brackets positioned for 2 layers of 1/2 in. drywall.



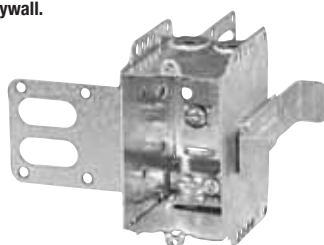
**CI2104-LSSA2X-1**

“Wraparound” bracket for 2-1/2 in. and 3-5/8 in. steel studs. With integral support bracket. Brackets positioned for 2 layers of 1/2 in. drywall.



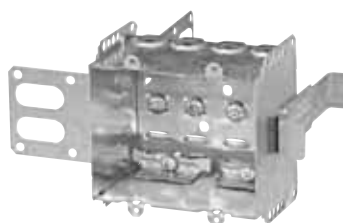
**CI2104-LSSX**

“Wraparound” bracket for 2-1/2 in. and 3-5/8 in. steel studs. With integral support bracket.



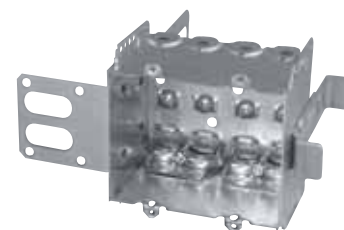
**CI2104-LSS1X-1**

“Wraparound” bracket for 2-1/2 in. and 3-5/8 in. steel studs. With integral support bracket. Brackets positioned for 2 layers of 1/2 in. drywall.



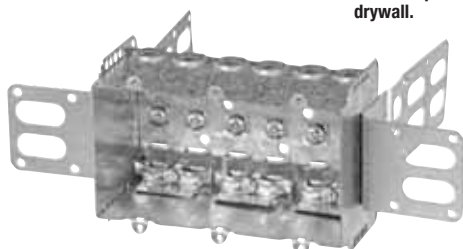
**CI2104-LSS2X-1**

“Wraparound” bracket for 2-1/2 in. and 3-5/8 in. steel studs. With integral support bracket. Brackets positioned for 2 layers of 1/2 in. drywall.



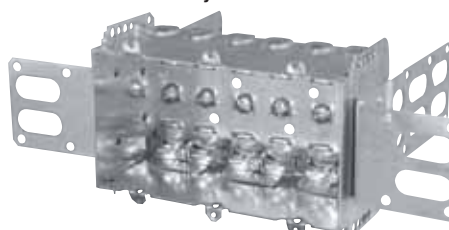
**CI2104-LSS2X**

“Wraparound” bracket for 2-1/2 in. and 3-5/8 in. steel studs. With integral support bracket.



**CI2104-LSS3X-1**

“Wraparound” brackets for 2-1/2 in. and 3-5/8 in. steel studs. With integral support bracket. Brackets positioned for 2 layers of 1/2 in. drywall.



**CI2104-LSS3X**

“Wraparound” brackets for 2-1/2 in. and 3-5/8 in. steel studs. With integral support bracket.



**BC1504-LLE**

Holding prongs and prepositioned depth tabs on one side.



Cat. No.	Width (in.)	Volume (Cu. in.)	Features		Pryouts ends
			Ears	Bracket	
<b>2-1/2 in. Deep — Non-Gangable — 3 in. High</b>					
<b>CI2104-LSSA1X-1</b>	2	12.5	-	“SSX”	4
<b>CI2104-LSSA2X-1</b>	3-3/4	25.0	-	“SSX”	8
<b>CI2104-LSSX</b>	2	12.5	-	“SSX”	4
<b>CI2104-LSS1X-1</b>	2	12.5	-	“SSX”	4
<b>CI2104-LSS2X-1</b>	3-3/4	25.0	-	“SSX”	8
<b>CI2104-LSS2X</b>	3-3/4	25.0	-	“SSX”	8
<b>CI2104-LSS3X-1</b>	5-1/2	37.5	-	“SSX”	12
<b>CI2104-LSS3X</b>	5-1/2	37.5	-	“SSX”	12
<b>2-1/2 in. Deep — Non-Gangable — 3 in. High</b>					
<b>BC1504-LLE</b>	2-1/4	15.0	-	P. Tabs	4