

PLUGMOLD® 2000 SERIES™



Two-piece, low profile multiple outlet raceway. Low profile requires minimal space.

CODE REFERENCE

cULus Listed Base & Blank Cover:
File E4376 Guide RJBT.

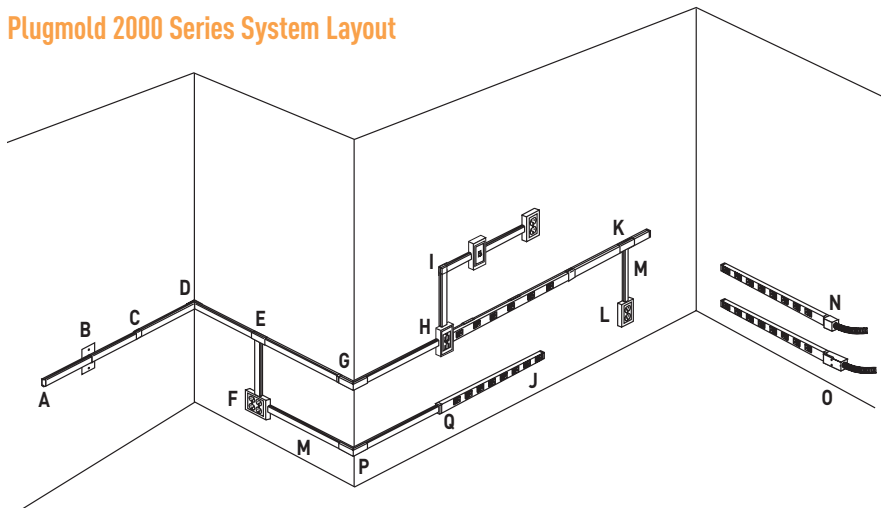
Multioutlet Assemblies:
File E15191 Guide PVGT.

Fittings:
File E41751 Guide RJPR.

Base & Blank Cover & Plugmold Series with Snapicoil Harness:
Meets Article 386 of NEC.
Meets Section 12-3032 of CEC.

Plugmold Wired Sections:
Meets Article 380 of NEC.
Meets Section 12-3032 of CEC.

Plugmold 2000 Series System Layout



NOTE: Illustration is for showing product applications only.

KEY

- A. V2010B Blank End Fitting
- B. V2051H Flush Plate Adapter
- C. V2006 Cover Clip
- D. 2017TC Internal Corner Coupling
- E. V2015 Tee Fitting
- F. V2048-2 Two-Gang Device Box
- G. V2018C Extern Elbow Cover
- H. V2048 Single-Gang Device Box
- I. V2011 90° Flat Elbow
- J. V20GB506 Plugmold Strip
- K. V2089 Side-Reducing Fitting
- L. V5748 Single-Gang Device Box
- M. V500 500 Series Raceway
- N. V2010A2 Entrance End Fitting
- O. V2010A3 Entrance End Fitting
- P. V518 External Elbow
- Q. V2089E End-Reducing Connector

COLOR OPTIONS



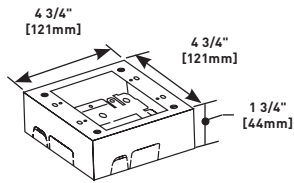
Plugmold® 2000 Series™ Part Numbers with a "V" prefix have an ivory finish. Part Numbers with a "G" prefix have a gray finish. Part Numbers with a "S" prefix have a stainless finish. Part Numbers with a "WH" prefix have a white finish. Part Numbers with a "BK" prefix have a black finish. Part Numbers without a prefix have a galvanized steel finish unless otherwise specified.

Custom color options are also available. Consult the factory for more information.

PLUGMOLD 2000® SERIES™

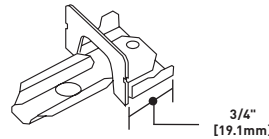
Plugmold 2000 Series Ordering Information (continued)

2048-2 Two-Gang Device Box



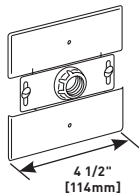
Cover has twistouts for 2000, 500 and 700 Series Raceways. Base has 1/2" trade size KO and rectangular KO for extension to wall box. Base has No.10 threaded hole for ground connection. Available in ivory (V2048-2), gray (G2048-2), black (BK2048-2), white (WH2048-2) and stainless steel (S2048-2). (S204822).

V2089E End Reducing Connector



Connects 2000 Series Plugmold with 500 Series Raceway through the end of 2000 Series Plugmold.

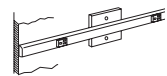
2051H Flush Plate Adapter



Feeds 2000 Series Plugmold from an existing wall outlet. Equipped with 1/2" [12.7mm] threaded stud, toothed lock washer for grounding, threaded hole for and conduit bushing. Available in ivory (V2051H), gray (G2051H), black (BK2051H), white (WH2051H) and stainless steel (S2051H).

PIP36 Plugin Plugmold

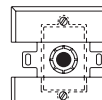
Available in 3' [915mm] with six single receptacles and two (2) mounting clips. Available in black (PIP36BK), white (PIP36WH) and ivory (PIP36V).



Plugmold 2000 extended from wall outlet using 2051H.

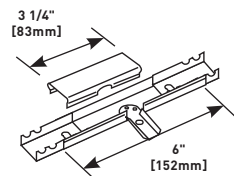


2051H fastened to horizontally mounted wall box.



2051H fastened to vertically mounted wall box.

V2089 Side Reducing Connector



Connects 2000 Series Plugmold with 500 Series Raceway through the side of 2000 Series Plugmold.

2000 Series Interconnectivity Fittings

FROM	CONNECTION REQUIRED	TO	USE CATALOG NUMBER
500 Series Raceway	Side of Plugmold 2000 Series		V2089, V2048, V2048-2
500 Series Raceway	End of Plugmold 2000 Series		V2089E, V2048, V2048-2
Existing Outlet	Plugmold 2000 Series		V2051H
1/2" trade size Conduit or Armored Cable	End of Plugmold 2000 Series		V2010A2, V2010A3