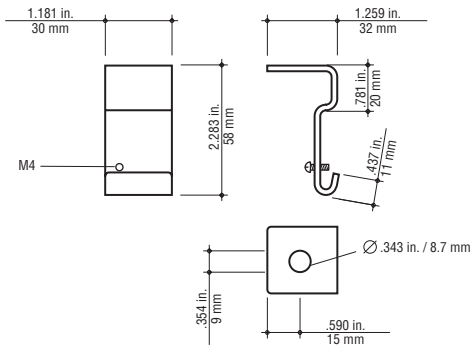


Side Hanger Clamp




Dimensions

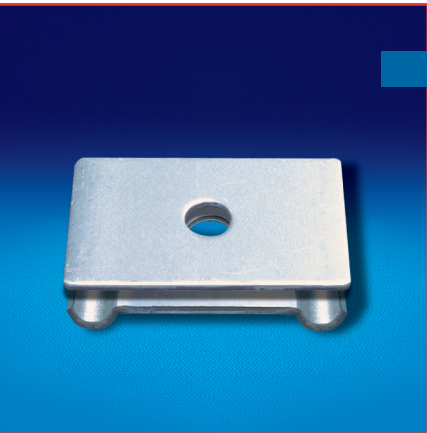


The side hanger clamp is used to construct trapeze supports using threaded rods. The offset support hole allows for trouble-free access to support nuts for height adjustment and the rod can continue downward to allow for multi-level (tiered) trapeze installations. A set screw holds tray firmly in position once installation is complete. Available in pregalvanized steel. For use with 1/4" threaded rod.

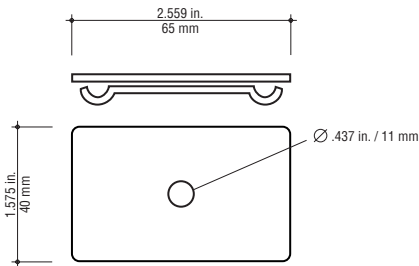
Material	Catalog number	Weight	
		lb/ea.	kg/ea.
Pregalvanized Steel	ETH-SH-PG	0.85	0.39

 Refer to page 33 for an application example.

Threaded Rod Clamp




Dimensions



This clamp is used for center-hung applications to secure tray sections to threaded rod for ceiling mounting and can be used with U-profile tray in 4", 8" and 12" widths. This clamp is not designed for use with C-profile tray. Available in pregalvanized steel. For use with 3/8" threaded rod.

Hole Ø		Catalog number	Weight	
in.	mm		lb/ea.	kg/ea.
0.437	11.0	ETH-CHC-PG	0.18	0.08

 Refer to page 32 for an application example.