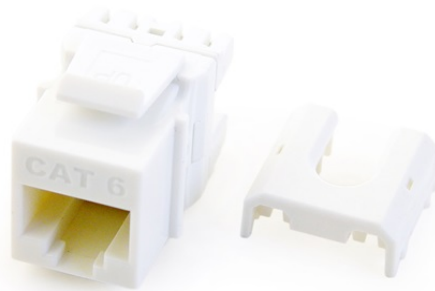


Cat 6 Quick Connect RJ45 Keystone Insert, White

WP3476-WH



features & benefits

- Easily terminate all four pairs using the Legrand Punch & Go Tool ([AC3400](#))
- RJ45 Inserts can be terminated with any 110 punchdown tool
- Exceeds EIA/TIA 568A/B Cat 6 Performance Specifications
- Available in Black, Brown, White, Light Almond, Grey, Blue, Orange
- Available in contractor packs

specifications

General Info

Cable Type: Cat 6
Color: White
finish: 50 microinches 24K Hard Gold over 70-100 microinches Nickel
Pair Count: 4
Termination: via Punchdown Tool
Connection Type: 8P8C
Type: Keystone Insert
Housing Material: High Impact Flame Retardant Plastic
Input Plug Type: RJ45 Male

Listing Agencies/Third Party Information

CSA Listing Info: CAN/CSA-C22.2 No. 182.4-1990
CSA Standard: Yes
UL Listing No: ANSI/UL 1863
UL Standard: Yes

UN SPS C: 39121704

Dimensions

Depth Metric: 30 mm
Depth U S: 1.18"
Height Metric: 22 mm
Height U S: .87"
Width Metric: 16.9 mm
Width U S: .665 in

Technical Information

Flammability Rating: UL94-V0
Humidity: Max Noncondensing 93%
Material: Phosphor Bronze Alloy
Mounting: Wallplate or Strap
Ohm Value: Contact Resistance: Spring Wire - 20 milliohm max, IDC - 2.5 milliohm max
Operating Temperature Celsius: -10°C to 60°C
Operating Temperature Fahrenheit: 14°F to 140°F
Storage Temperature: -40°C to 70°C
Wire Gauge: 22 - 24 AWG
Receptacle Type: RJ45 Female
Number Of Receptacles: 1