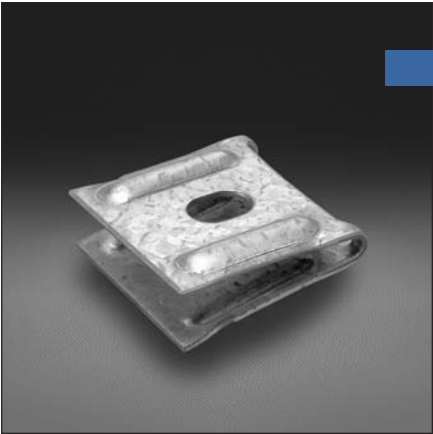
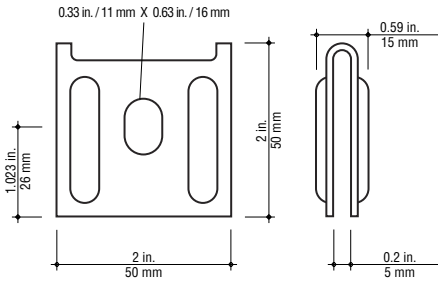


Wall Clamp



Dimensions



This wall clamp attaches the flange of U- and C-profile T&B® Express Tray, up to a maximum of 8" wide, to the wall surface. Available in pregalvanized steel and stainless steel.

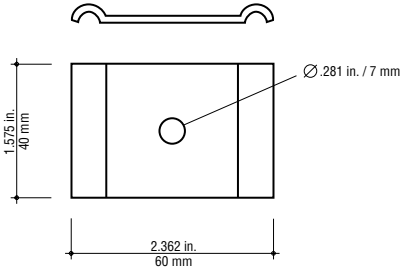
i Refer to page I30 for an application example.

Material	Catalog number	Weight	
		lb/ea.	kg/ea.
Pregalvanized Steel	ETH-WC-PG	0.39	0.18
Stainless Steel (Type 304)	ETH-WC-SS	0.39	0.18

Universal Clamp



Dimensions



The universal clamp is designed for mounting T&B® Express Tray to wall brackets, strut or trapeze configurations and is available in pregalvanized steel.

i Refer to pages I30 and I33 for application examples.

Material	Catalog number	Weight	
		lb/ea.	kg/ea.
Pregalvanized Steel	ETH-UNIVC-PG	0.44	0.20
Hot-dipped Galvanized Steel	ETH-UNIVC-HD	0.44	0.20