



EFD/EFDB and EDS Series Factory Sealed Control Stations

EFD/EFDB Push Button Accessories

NEC:
 Class I, Division 1 and 2, Groups B♦, C, D
 Class II, Division 1 and 2, Groups E, F, G
 Class III

		Description	Catalog Number
Pilot Light, Factory Sealed			
 Pilot Light	 Chamber Only	Incandescent	
		<i>Furnished with 6S6 120 Vac incandescent lamp, jewel and guard. Has 457 mm (18") long, type SFF-2 pigtail leads; +150 °C (+302 °F). Body has 3/4" straight thread (NPSM).</i>	
		With Red Jewel	SPLSREB
		With Green Jewel	SPLSGRB
		With Amber Jewel	SPLSAMB
		With Blue Jewel	SPLSBLB
		With Clear Jewel	SPLSCLB
		With Opal Jewel	SPLSOPB
		LED	
		<i>Furnished with candelabra base 120 Vac LED, jewel and guard. Has 457 mm (18") long, type SFF-2 pigtail leads; +150 °C (+302 °F). Body has 3/4" straight thread (NPSM).</i>	
		With Red LED, Clear Jewel	SPLNSREB
		With Green LED, Clear Jewel	SPLNSGRB
		With Amber LED, Clear Jewel	SPLNSAMB
		Chamber Only (Same as above, less jewel, guard and lamp)	SPLSSCB

Pilot Light Jewel/Guard Assembly

The below catalog numbers indicate an assembly of the Pilot Light Jewels and Guards. Jewels and Guards are not available as separate items.



Amber Jewel/Guard	JGBNA
Blue Jewel/Guard	JGBNB
Clear Jewel/Guard	JGBNC
Green Jewel/Guard	JGBNG
Opal Jewel/Guard	JGBNO
Red Jewel/Guard	JGBNR

Replacement Bulbs



EPL-B6W



EPLLEDR

Clear Bulbs

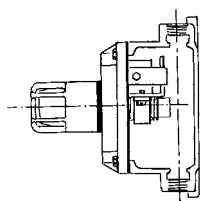
Furnished with candelabra base. 6 Watt, 120 Vac, Type 6S6 **EPL-B6W**

LED Replacements

Furnished with candelabra base. 120 Vac, 10 mA.

Red LED	EPLLEDR
Green LED	EPLLEDG
Amber LED	EPLLEDA

Transformer



Add Suffix as listed below. Transformer clamps directly to pilot light barrel. **Only one pilot light transformer assembly per one gang body.**

Primary Vac	Lamp Vac	Suffix
220	120	TR2
277	120	TR3
440	120	TR4
550	120	TR5

♦ Suitable for Class I, Group B when installed in an enclosure rated for Class I, Group B.