

TYPES YBA, YBA-FX and YBAV-FX

BREAK-AWAY HYLUG™

Copper Compression Terminals
UL Listed 90° C, Up to 35 kV ♦

The Break-Away HYLUG™ line of Copper terminals are designed to provide maximum field flexibility by allowing the installer (using the Break-Away feature) to easily convert two-hole terminals to one-hole terminals to suit the application, while retaining UL Listing and CSA Certification.

The Break-Away HYLUG™ line of terminals encompasses a wide range of features that affords the installer the flexibility in meeting the requirements for challenging projects.



Features & Benefits

- BREAK-AWAY feature allows for field modification of the terminal from a two-hole design to a one-hole design
- Field modification of the terminal does not require specialized tooling or training.
- Slotted second stud provides built in flexibility for the terminal to conform to various bus bar dimensions.
- Narrow tongue design allows for the terminal to fit into tight spaces.
- Accommodates a wide range of conductor combinations (AWG, Compact, DLO, Flex and Metric).
- Terminals are range taking when installed with Y644HSXT or PAT644 tooling platforms.



NOTE: Field bending straight lugs to achieve an angular connection will void UL Listing / CSA Certifications and BURNDY will not be liable for the connection.

Catalog Number	Conductor Size	mm ²	Dimensions						Installation Tooling (# of Crimps)					
			Stud Hole Spacing	Stud Hole Size [MM]	Tongue Width	B	T	L	Dieless	MD6, MD7, MD7-34R platforms OUR840**	Y500CTHS, PAT60018V, PATMD6 platform	Y35, Y39, Y750, *Y46, PAT750, *PAT46 platform	Color Code	Die Index
YBAV25FX14	1/0 AWG G,H,I,K,M DLO (275/24) 1/0 AWG	50	.63" to 1.00"	1/4" [6]	0.73	1.50	0.13	3.69	MY29 (MY29 platform tools can only be used on Code Conductor), PAT644- & Y644- platforms (1) 4-POINT® Y81K, PAT81K, Y4PC PAT4PC- platforms (2)	W25VT (4) X25RT (4) W25RT (4)	W25VT (4) X25RT (4) W25RT (4)	U25RT (2)	Pink	12 or 348
YBAV26FX14	2/0 AWG G,H,I,K,M DLO (325/24) 2/0 AWG	70	.63" to 1.00"	1/4" [6]	0.89	1.50	0.13	3.74		W26VT (4) X26RT (4) W26RT (4)	W26VT (4) X26RT (4) W26RT (4)	U26RT (2)	Black	13
YBAV27FX14	3/0 AWG G,H,I,K,M DLO (450/24) 3/0 AWG	95	.63" to 1.00"	1/4" [6]	0.87	1.50	0.14	3.78		W27VT (4) X27RT (4) W27RT (4)	W27VT (4) X27RT (4) W27RT (4)	U27RT (4)	Orange	14
YBAV28FX	4/0 AWG G,H,I,K,M DLO (550/24) 4/0 AWG	120	1" to 1.75"	1/2" [12]	0.94	1.62	0.14	5.24		X28RT (6) W28RT (4) W28VT (4)	X28RT (6) W28RT (4) W28VT (4)	U28RT (2)	Purple	15
YBA29	250 kcmil	-	1" to 1.75"	1/2" [12]	0.96	1.62	0.16	5.21		W29RT (4) W29VT (4)	W29RT (4) W29VT (4)	U29RT (2)	Yellow	16
YBA31FX	250 kcmil I,K,M DLO 262 (650/24)	150	1" to 1.75"	1/2" [12]	0.96	2.00	0.18	5.68	PAT644 & Y644 platforms (1), 4-POINT® Y81K, PAT81K, Y4PC, PAT4PC platforms (2) for YBA29, (3) for YBA31FX & YBA32FX (4) for YBA34FX	W30VT(4) W30RT(4)	W30VT (4) W30RT (4)	U30RT (4)	White	17 or 298
YBA32FX	300 kcmil G,H,I,K,M DLO 313 (775/24)	185	1" to 1.75"	1/2" [12]	0.96	2.12	0.19	5.85		W31VT (4) W31RT (4)	W31VT (4) W31RT (4)	U31RT (4)	Red	18 or 324
YBA34FX	350 kcmil G,H,I,K,M DLO 373 (925/24)	240	1" to 1.75"	1/2" [12]	0.96	2.25	0.23	6.08		W32VT (4) W32RT (4)	W32VT (4) W32RT (4)	U32RT (4)	Blue	19 or 470

* Y46 and PAT46 platforms require PUADP-1 adaptor to use U dies

** OUR840 can use X-style dies only

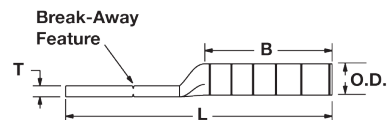
TYPES YBA, YBA-FX and YBAV-FX

BREAK-AWAY HYLUG™

(Continued)

Copper Compression Terminals
UL Listed 90° C, Up to 35 kV ♦

C-92



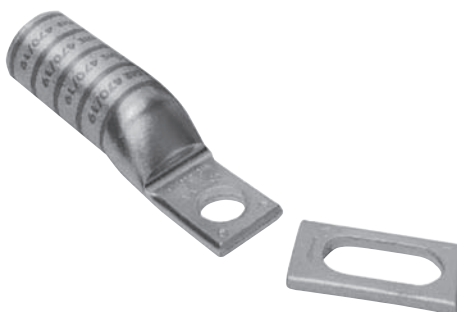
NOTE: Field bending straight lugs to achieve an angular connection will void UL Listing / CSA Certifications and BURNDY will not be liable for the connection.

Catalog Number	Conductor Size	mm ²	Dimensions						Installation Tooling (# of Crimps)					
			Stud Hole Spacing	Stud Hole Size [MM]	Tongue Width	B	T	L	Dieless	MD6, MD7, MD7-34R platforms OUR840**	Y500CTHS, PAT60018V, PATMD6 platform	Y35, Y39, Y750, *Y46, PAT750, *PAT46 platform	Color Code	Die Index
YBA36FX	500 kcmil G,H DLO 444 (110/24)	-	1" to 1.75"	1/2" [12]	1.47	2.69	0.27	6.59	Y644HSXT (1), PAT644XT-18V (1), Y81KFT(2), PAT81KFT (2)	—	—	U34RT (4)	Brown	20 or 299
YBA36FX58		-	1" to 1.75"	5/8" [16]	1.47	2.69	0.27	6.59				U34RT (4)		
YBA38FX	500 kcmil H,I,K 550 kcmil G,H,I DLO 535 (325/24)	300	1" to 1.75"	1/2" [12]	1.62	2.81	0.27	6.76				U38XRT (4)	Pink	L99
YBA39	750 kcmil (Code Class AA; A & B)	-	1" to 1.75"	1/2" [12]	1.63	2.88	0.27	6.87				U39RT (4)	Black	24
YBA44FX	750 kcmil G,H DLO 777 (1925/24)	500	1" to 1.75"	1/2" [12]	1.62	3.00	0.32	7.14				U44XRT (4)	Yellow	L115
YBA44FX58		500	1.25" to 2.00"	5/8" [16]	1.62	3.00	0.32	7.46				*P44XRT (4)		

* Y46 and PAT46 platforms require PUADP-1 adaptor to use U dies

** OUR840 can use X-style dies only

• P-RT dies for Y / PAT46 Tooling only



**TYPES YBA-KIT,
YA-KIT, YBAFX-KIT,
YAFX-KIT**

**Copper and Aluminum
Turbine Lug Kits**

UL Listed 90° C, Up to 35 kV ♦

Aiding in the staging and flow of material on a project, the BURNDY® Turbine Lug Kits are designed to meet the termination requirements for the standard 1.5 MW wind turbine, improving overall project efficiency. Each lug kit contains UL Listed and CSA Certified copper or aluminum lugs. Kits include the required number of lugs needed to terminate aluminum or copper conductors on the low voltage side of a base transformer or the down tower switchgear. There are four individual kits, two for aluminum, two for copper, they are all custom designed to handle any termination requirements.



NOTE: Field bending straight lugs to achieve an angular connection will void UL Listing / CSA Certifications and BURNDY will not be liable for the connection.



C-95

Features & Benefits

- **YA44A3** (1000 kcmil aluminum) HYLUG™, 2-hole, narrow tongue aluminum compression terminal that is dual rated for both copper and aluminum
- **YBA44A** (1000 kcmil, 1000 compact aluminum) Break-Away HYLUG™, 2-hole narrow tongue aluminum compression terminal that is dual rated for both copper and aluminum. The break-away feature allows for field modification of the terminal from a 2-hole to a 1-hole terminal and still retain UL Listing and CSA Certification
- **YAZ442NNTFX** (777.7 Flex, 1925/24 str., 750 kcmil copper) HYLUG™, 2-hole narrow tongue copper compression terminal that accommodates flex and AWG conductor
- **YBA44FX** (777.7 Flex, 1925/24 str. [750 kcmil] nom. copper) Break-Away HYLUG™, 2-hole, narrow tongue copper compression terminal that accepts a wide range of conductor combinations (AWG, compact, DLO, flex, metric). The Break-Away feature allows field modification of the terminal from a 2-hole to 1-hole terminal and still retain UL Listing and CSA Certification
- Both aluminum and copper low voltage turbine lug kits include **YA29-2N** (250 kcmil, copper, 2-hole) lugs for terminating grounding conductor
- Aluminum kits are shipped with squeeze packets of PENETROX™ oxide inhibitor for terminating aluminum conductor

Copper Kits

Catalog Number	Includes:
YBAFX15CLKIT	15 pcs YBA44FX (777.7 Flex Cu 2-hole NEMA lug); 3 pcs YA29-2N (250 kcmil Cu 2-hole NEMA lug)
YAFX15CLKIT	15 pcs YAZ442NNTFX (777.7 Flex Cu 2-hole NEMA lug); 3 pcs YA29-2N (250 kcmil Cu 2-hole NEMA lug)

Aluminum Kits

Catalog Number	Includes:
YBA15ALKIT	15 pcs YBA44A (1000 Al 2-hole NEMA lug); 3 pcs YA29-2N (250 kcmil Cu 2-hole NEMA lug); 1 squeeze tube (1/2 oz) of PENETROX™ oxide inhibitor
YA15ALKIT	15 pcs YA44A3 (1000 Al 2-hole NEMA lug); 3 pcs YA29-2N (250 kcmil Cu 2-hole NEMA lug); 1 squeeze tube (1/2 oz) of PENETROX™ oxide inhibitor



Heat shrink and mounting hardware sold separately.