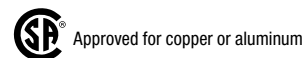
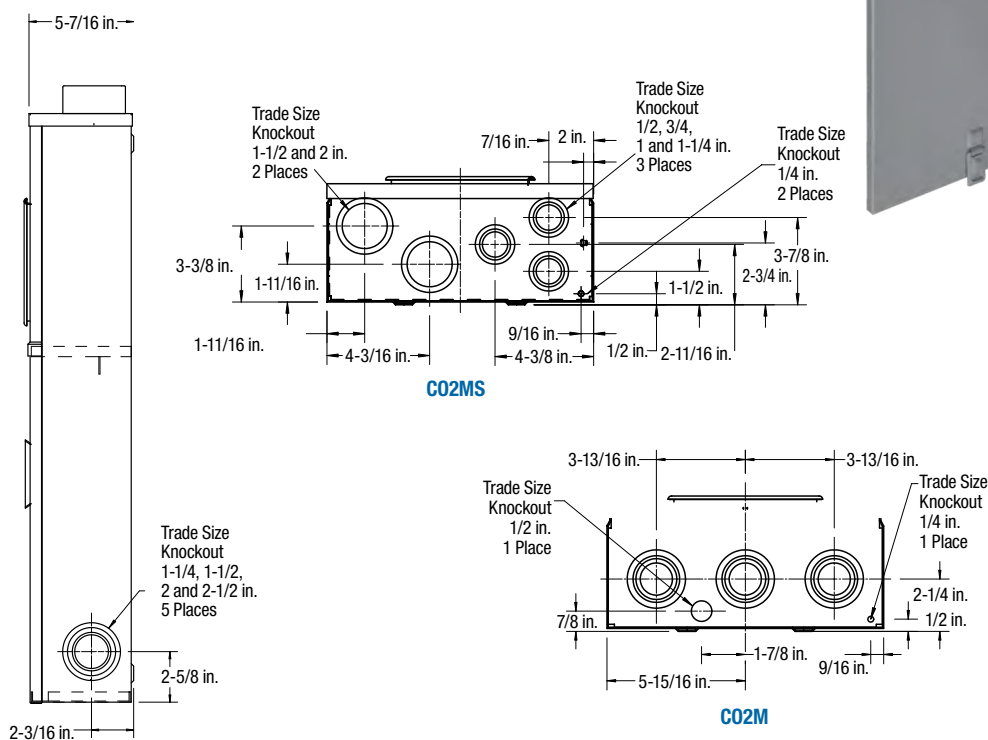


200 A – Single Phase 120/240 V; Combination with or without Breaker and Splitter

- Conductor range (Line and Load): 6 AWG-250 kcmil
- Tunnel type connectors for both load and line sides
- For combination overhead/underground service only
- Cutler Hammer (ED, EDH) breaker to be field-installed
- With CO2FB braid connector (also available for field installation cat. no.: CO2FB-KIT)
- **Primarily used in: Alberta**



Cat. No.	Type	Description	Dimensions (in.)			Weight Each	
			H	W	D	lb.	kg
4 JAW							
C02M	Combination OH/UG	Provision for field-installed Cutler Hammer (ED, EDH) 200 A 2 pole 10 kA rated circuit breaker, provision for pole mounting (splitter not included)	30-5/8	12	5-7/16	28	12.7
C02MS		Provision for field-installed Cutler Hammer (ED, EDH) 200 A 2 pole 10 kA rated circuit breaker, provision for pole mounting (splitter included)	39-3/8			42	19
C02MS-1 1/4		Provision for field-installed Cutler Hammer (ED, EDH) 200 A 2 pole 10 kA rated circuit breaker, provision for pole mounting, c/w 1-1/4 hub (splitter included)				44	19.5
C02MS-2446		Provision for field-installed Cutler Hammer (ED, EDH) 200 A 2 pole 10 kA rated circuit breaker, provision for pole mounting, c/w 2446 connector (splitter included), Fortis Alberta approved				47	21.3
C02MSB-200		c/w Siemens QJ 200 A 2 pole 10 kA rated circuit breaker, c/w neutral bar (splitter included)				59	26.8
C02MSU	Underground	Provision for field-installed Cutler Hammer (ED, EDH) 200 A 2 pole 10 kA rated cicuit breaker, pedestal type for padmount applications (splitter included)	60				

Note: Mounting brackets are now shipped unassembled inside each unit where applicable.