

CSA, UL

RIGID PVC CONDUIT FITTINGS

WTG15/10 SINGLE GANG TOGGLE SWITCH
COVERS, 077555, 077606

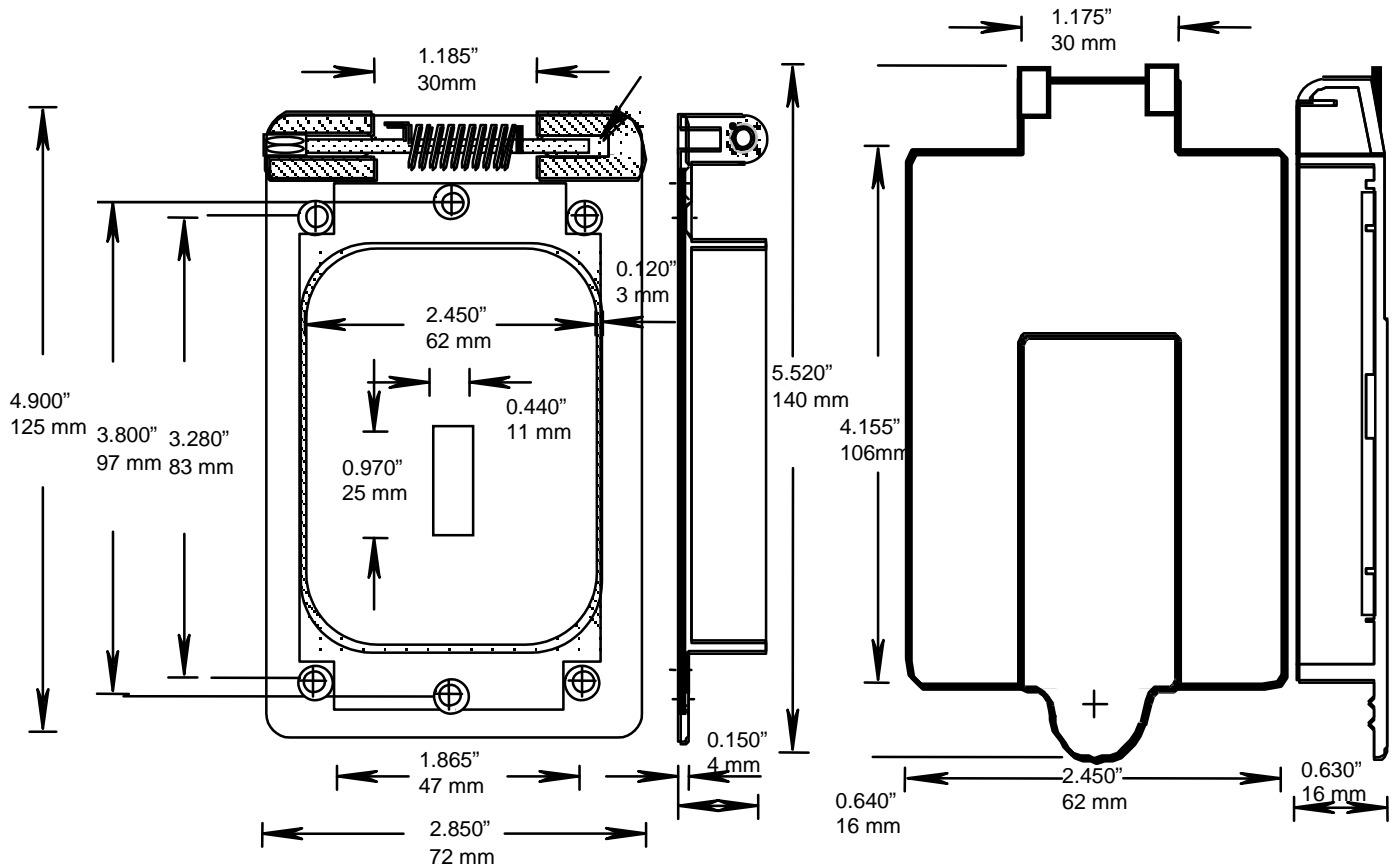
ISSUE DATE:

DATE D'EMISSION: 2007 06 30

SUPERCEDES:

REPLACE: 2002 01 15

3



Part # 077606 Molded with four corner Knockouts for screws

Part # 077555 Molded with four corner holes for screws

PART DESCRIPTION	PART CODE	QUANTITY
BASE GASKET	072837	1
6-32X17/32 QUADREX SCREW	172652	4
COVER GASKET	072836	1
TORSION SPRING	072548	1
BRASS HINGE PINS	072544	1