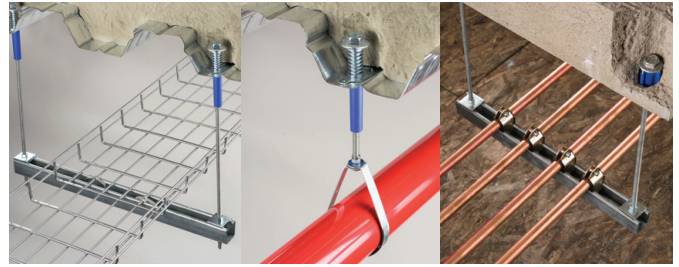


Rod Lock Preset Anchors

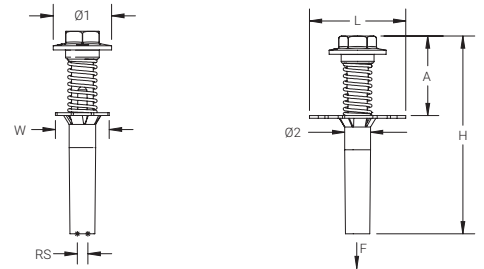
- Eliminate overhead drilling into building structure – Rod Lock Preset Anchors are cast in place
- Easy “push-to-install” design allows installers to simply push the threaded rod through the mounting hole, instantly holding it in position
- Works with slightly damaged threads and minor burrs on the threaded rod
- Prefabricated assemblies easily lift and lock into place, helping to save time and money
- Plastic flange acts as insert locator when the forms are removed
- Rod Lock Preset Anchors have a pending evaluation to AC446, Acceptance Criteria for Headed Cast-In Specialty Inserts in Concrete

Preset anchors for concrete that allow complex prefabricated threaded rod assemblies to be easily pushed into place.



ROD LOCK METAL DECKING PRESET ANCHOR

- Set in place through a drilled hole in the metal decking before the concrete is poured
- Can be used in lower and upper flute installations



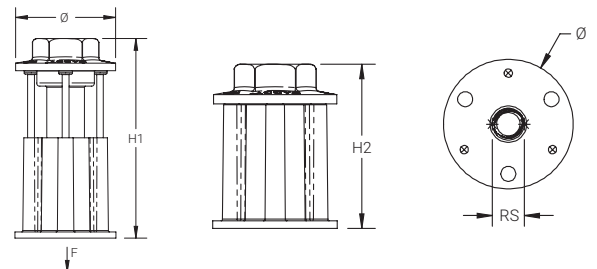
Material: Steel
Finish: Electrogalvanized



Part Number	Rod Size RS	Diameter 1 Ø1	Diameter 2 Ø2	Height H	Length L	Width W	A	Drill Bit Diameter	Static Load F
CRLM37EG	3/8"	1.65"	0.7"	5.6"	2.8"	1 1/2"	2.3"	3/4"	830 lb
CRLM50EG	1/2"	1.95"	0.8"	5.7"	2.8"	1 1/2"	2.4"	7/8"	830 lb

ROD LOCK PLYWOOD FORM PRESET ANCHOR

- Nails hold the anchor in place during the pour and easily break off with a strike of a hammer once the plywood forms are removed



Material: Steel
Finish: Electrogalvanized



Part Number	Rod Size RS	Diameter Ø	Height 1 H1	Height 2 H2	Static Load F
CRLW37EG	3/8"	1.65"	3.2"	2.4"	1,407 lb
CRLW50EG	1/2"	1.90"	3.3"	2.5"	1,618 lb