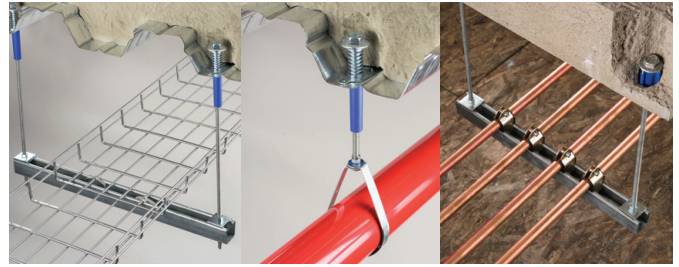


Rod Lock Preset Anchors

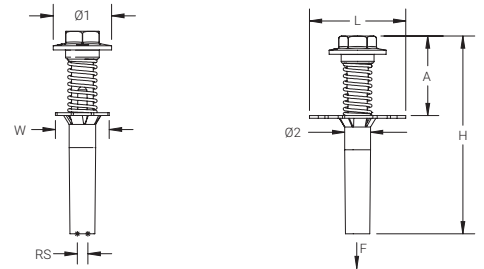
- Eliminate overhead drilling into building structure – Rod Lock Preset Anchors are cast in place
- Easy “push-to-install” design allows installers to simply push the threaded rod through the mounting hole, instantly holding it in position
- Works with slightly damaged threads and minor burrs on the threaded rod
- Prefabricated assemblies easily lift and lock into place, helping to save time and money
- Plastic flange acts as insert locator when the forms are removed
- Rod Lock Preset Anchors have a pending evaluation to AC446, Acceptance Criteria for Headed Cast-In Specialty Inserts in Concrete

Preset anchors for concrete that allow complex prefabricated threaded rod assemblies to be easily pushed into place.



ROD LOCK METAL DECKING PRESET ANCHOR

- Set in place through a drilled hole in the metal decking before the concrete is poured
- Can be used in lower and upper flute installations



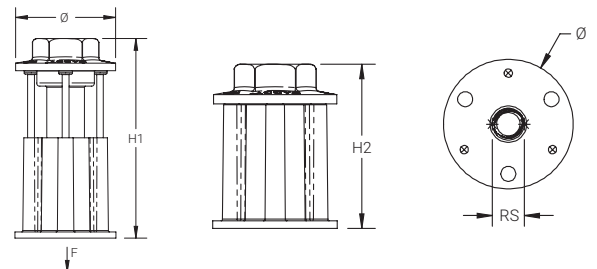
Material: Steel
Finish: Electrogalvanized



| Part Number | Rod Size RS | Diameter 1 Ø1 | Diameter 2 Ø2 | Height H | Length L | Width W | A | Drill Bit Diameter | Static Load F |
|-------------|-------------|---------------|---------------|----------|----------|---------|------|--------------------|---------------|
| CRLM37EG | 3/8" | 1.65" | 0.7" | 5.6" | 2.8" | 1 1/2" | 2.3" | 3/4" | 830 lb |
| CRLM50EG | 1/2" | 1.95" | 0.8" | 5.7" | 2.8" | 1 1/2" | 2.4" | 7/8" | 830 lb |

ROD LOCK PLYWOOD FORM PRESET ANCHOR

- Nails hold the anchor in place during the pour and easily break off with a strike of a hammer once the plywood forms are removed



Material: Steel
Finish: Electrogalvanized



| Part Number | Rod Size RS | Diameter Ø | Height 1 H1 | Height 2 H2 | Static Load F |
|-------------|-------------|------------|-------------|-------------|---------------|
| CRLW37EG | 3/8" | 1.65" | 3.2" | 2.4" | 1,407 lb |
| CRLW50EG | 1/2" | 1.90" | 3.3" | 2.5" | 1,618 lb |