

**DIMENSION:**  
LENGTH: 22"(2X2)  
WIDTH: 20"(2X2)  
DEPTH: 1-5/8"



\* For list of qualified DLC fixture, please consult factory



(On selected configuration, consult factory)

**4000**  
LUMENS

**34**  
WATT

According to  
DLC Test Results

**APPLICATION:**

Widely used in Factory, Office, Workshop, Warehouse, Restaurant, Logistics Center Exhibition Hall, Gymnasium, Supermarket, other places where need indoor illumination.

**FEATURES:**

- LED Troffer housing major material involve high quality steel, PC diffuser, it helps for cooling and uniformity lighting distribution
- 80% more energy saving compared with fluorescent lamp
- Classical shape and creative inspiration in its design
- Lighting the way to your site and maximum savings
- The Flexibility and Safety you Desire, varieties of color temperature and wattage

**WARRANTY**

- One year standard warranty on fixture
- 5 year limited warranty on LED

Ordering Information: Example: 22-OVHP-RTK-LED-5000L-DIM10-MVOLT-30K-80

	<b>OVHP-RTK</b>	<b>LED</b>						
<b>FIXTURE SIZE</b>	<b>SERIES</b>	<b>TYPE</b>	<b>LUMENS</b>	<b>DIMMING</b>	<b>VOLTAGE</b>	<b>CCT</b>	<b>CRI</b>	<b>EMERGENCY</b>
22 - 2' X 2'	OVHP-RTK-Oracle LED Troffer Retrofit Kit	LED	4000L - (3900 lumens)	DIM10 - 0-10V Dimming LUTH - Lutron Dimming DIMST - Step Dimming	MVOLT 347* <small>* Consult factory for details</small>	30K - (3000K) 35K - (3500K) 40K - (4000K) 50K - (5000K)	80	0-EMG-LED

# CONTROL OPTIONS

## EASYFIT by EnOcean

### Controls Options to be Installed on the Fixture

Self-powered sensors and switches, combined with LED fixture controllers and a commissioning tool, permit easy configuration, intelligent local control, and seamless integration into building automation systems.

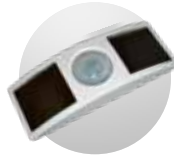


**LEDRU**  
LED Relay Zone  
Controller 0-10V



**LEDDU**  
LED Zone  
Controller 0-10V

### Controls Provided by EnOcean



**EOSCU**  
Occupancy Sensor  
Ceiling Mount



**EOSWU**  
Occupancy Sensor  
Wall Mount



**ELLSU**  
Daylight Sensor  
Ceiling Mount



**ESRPU/EDRPU**  
Wall Switches



**LEVITON**  
Wall Switches  
902 MHz category



**NWC 300U**  
Navigan Wireless  
Commissioner

## legrand®

WATTSTOPPER®

### Controls Installed on the Fixture



#### LMFC-011

Fixture Will be Shipped Legrand Wattstopper DLM Enabled with LMFC-011 Module Controller Installed on the Fixture. Fixtures will be compatible with Legrand Wattstopper DLM Load Controllers, DLM Sensors, DLM Switches, DLM Remote Control, and DLM Configuration tool.

#### Switches



LMSW-105 LMDM-101

#### Remote



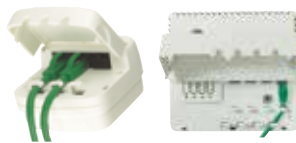
LMRH-105

#### Configuration tool



LMCT-100-2

#### Plug Load Controllers

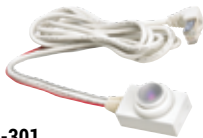


LMPL-101 LMPL-201

#### Sensors



LMDC-100 LMLS-400 LMLS-500



#### FD-301

Fixture Will be Shipped with Legrand Wattstopper FD-301 (Integrated Daylight Dimming Photosensor) installed and FS-PP-V2 Fixture Power Pack.



FS-PP-V2



#### FSP-202

Fixture Will be Shipped with Legrand Wattstopper FSP-202 (multi-level control based on motion and/or daylight contribution) installed.



#### FSP-212

Fixture Will be Shipped with Legrand Wattstopper FSP-212 (multi-level control based on motion and/or daylight contribution) installed.

LED

Control Options

# CONTROL OPTIONS



## Controls Installed on the Fixture



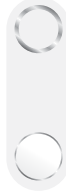
**FCJS-010**  
Individual  
Fixture Control

Fixture Will be Shipped LUTRON VIVE Enabled with LUTRON FCJS-010 0-10V Control Module Installed on the Fixture. Fixtures will be compatible with Lutron FC-SENSOR Occupancy/Daylight Sensor or FC-VSENSOR Vacancy/Daylight Sensor which can be Added in the Field for Remote Mounting. Fixture May be Controlled with any Vive control systems. Fixtures must be ordered with a 0-10V. Driver.



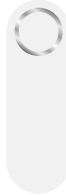
**FCJS-ECO**  
Individual  
Fixture Control

Fixture Will be Shipped LUTRON VIVE Enabled with LUTRON FCJS-ECO EcoSystem Control Module Installed on the Fixture. Fixtures will be compatible with Lutron FC-SENSOR Occupancy/Daylight Sensor or FC-VSENSOR Vacancy/Daylight Sensor which can be Added in the Field for Remote Mounting. Fixture May be Controlled with any Vive control systems. Fixtures must be ordered with a Lutron Driver.



### DFCSJ-OEM-OCC

Fixture Will be Shipped LUTRON VIVE Enabled with DFCSJ-OEM-OCC\* Vive Integral Fixture Control (with Sensing) Installed on the Fixture. Fixture May be Controlled with any Vive control systems. Fixtures must be ordered with a DMX or Lutron EcoSystem Driver



### DFCSJ-OEM-RF

Fixture Will be Shipped LUTRON VIVE Enabled with LUTRON DFCSJ-OEM-RF\* Vive Integral Fixture Control (RF Only) Installed on the Fixture. Fixture May be Controlled with any Vive control systems. Fixtures must be ordered with a DMX or Lutron EcoSystem Driver.

## Controls Provided by Lutron



Vive Wireless Hub



DayLight  
Sensor



Ceiling Mount  
Occupancy/Daylight  
Sensor



Ceiling Mount  
Occupancy Sensor



Pico  
Remote



Wall Mount  
Switch



Wall Mount  
Occupancy Sensor



Lutron App



Fixture will be shipped with Leviton ZL027-N0W power control module installed on the fixture. Fixtures will be compatible with Leviton ZL00J-D0W sensor control module which can be added in the field for remote mounting. Fixture must be controlled with Leviton Intellect Keypad Room Controller, or Leviton Neuron App.



**ZL027-N0W**  
Power control module



**ZL00J-D0W**  
Sensor control module

## Leviton Keypad



**ZLDNK-1W**



**ZLDNK-2W**



**ZLDNK-4W**



**ZLDNK-8W**

Intellect™ Keypad Room  
Controller (Required)

## Leviton App



Neuron App

LED

Control Options