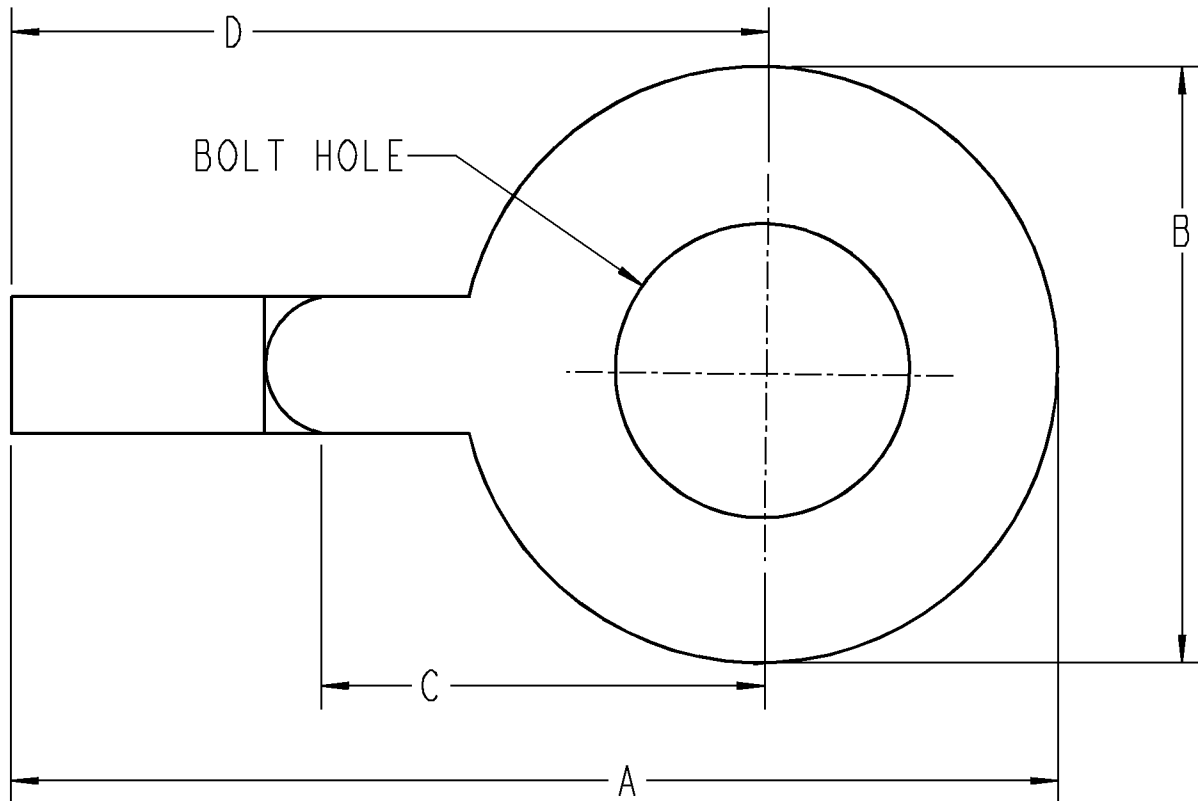


**T&B****Sta-Kon**

MATERIAL: COPPER  
FINISH: TIN PLATE  
OPTIONAL FINISH: NICKEL PLATED  
(ADD SUFFIX NP TO CAT NO)  
WIRE RANGE: 22-16 AWG  
TONGUE THICKNESS .032"  
TOOLING (22- 18 AWG): WT111M

A73	3/8	.95	.54	.35	.68
A72	5/16	.93	.50	.32	.68
A71	1/4	.93	.50	.32	.68
CAT NO.	BOLT HOLE	A MAX	B NOM	C MIN	D MAX

**GENERAL NOTES**

1. ALL DIMENSIONS ARE FOR REFERENCE ONLY.
2. DIMENSIONS IN BRACKETS [ ] ARE IN METRIC UNITS.

**REVISIONS**

SEE ERN ( 2005818 )  
FOR APPROVAL SIGNATURES  
& RELEASE DATE.  
PROJECT NO: TM401323

**Thomas & Betts**  
www.tnb.com

DESCRIPTION:

**STA-KON TERMINALS**

ORIGINAL PROJECT NO / ( ERN NO )  
**TM401323/ ( 2005818 )**

SHEET NO:  
**1 OF 1**

REV. NO:  
**-**

DRAWING NO:  
**WSD-000188**