

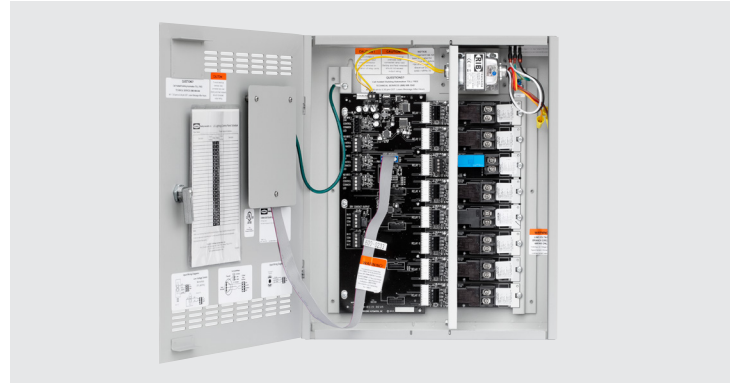


CX LIGHTING CONTROL PANELS

CX COMMERCIAL LIGHTING CONTROL PANELS

FEATURES

- LCD user interface with keypad
- 4, 8, 16 and 24 relay panel sizes
- Fully populated or empty
- Astronomical and real time clock for scheduling
- Upload or save programming via removable SD memory card
- NEMA 1 surface mount Enclosure
- UL916, UL924 and cUL listed
- 5 year limited warranty



RELATED PRODUCTS

- [CX Relays](#)
- [CX Dimming Option Card](#)
- [CX Programmable Switches](#)
- [CX Low Voltage Switches](#)
- [Low Voltage Heavy Duty Key Switch](#)

SPECIFICATIONS

CONSTRUCTION

- Keypad user interface mounted on exterior of door (Only on Master or Stand alone versions)
- Knockouts on top and bottom for low voltage and line voltage feeds
- NEMA 1 surface mount enclosure;
- Pre-drilled mounting holes for mounting to wall
- Panels have hinged locking door

INSTALLATION

- All CX panel versions are surface mount enclosures

ELECTRICAL

- CX04 and CX08; 120/277VAC or 120/347VAC
- CX16 and CX24; 120-277VAC or 347-480VAC
- CX04/CX08; 24VDC, 150mA (max. 300mA)
- CX16/CX24; 24VDC, 150mA (max. 900mA)

ELECTRICAL CONTINUED

- CXR2N 120/277VAC (50/60Hz)
- CXR3L 120/277/347VAC (50/60Hz)
- CXR3LEM 120/277/347VAC (50/60Hz)
- CXRTN 208/240/480VAC (50/60Hz)
- CXRTC 208/240/480VAC (50/60Hz)
- Wire size 14, 16, 18, 20, 22 AWG
- Recommended Tightening Torque: 0.45 N-m (4 in-lbs.)
- 500A @ 2ms (CXR3LEM only)

OPERATION

- Green indicator light on panel motherboard - indicates panel is receiving power.
- Green indicator light on the relay card - Indicates relay is in the closed position
- Red indicator light on the relay card - Dependent on input status and programming
- Indoor use only

OPERATION CONTINUED

- 32° - 112° (0° - 50°C)
- Relative humidity (non-condensing): 10% - 90%

CERTIFICATIONS

- UL916, CAN/CSA C22.2 No. 205
- UL924, CAN/CSA C22.2 No. 141 Emergency Lighting (CXR3LEM)
- Title 24 Certified
- This product qualifies as "designated country construction material" per FAR 52.225-11 Buy American-Construction Materials under Trade Agreements effective 5/27/2020. See [Buy American Solutions](#).

WARRANTY

- 5 year limited
- See [HCS Standard Warranty](#) for additional information

CX LIGHTING CONTROL PANELS

CX COMMERCIAL LIGHTING CONTROL PANELS

ORDERING GUIDE

Example: CX042S00SPN or CX082S083LM

CATALOG # _____

CX	Spaces	Input Voltage	S Enclosure	Relay Quantity	Relay Type	Options	TAA
Model							
CX CX Lighting Control Panel	04 4 Relay Spaces (Stand Alone version only) 08 8 Relay Spaces	2 120/277VAC 3 120/347VAC	S NEMA 1 Enclosure	00 No relays included (Required SP Relay Type) 04 4 Relays Installed (Fully Populated) 08 8 Relays Installed (Fully Populated)	SP CX Lighting Control Panel 2N 1-Pole Elect. Held N.O. Relays (CXR2N) 3L 1-Pole Latching Relays (CXR3L) TN 2-Pole Elect. Held N.O. Relays (CXRTN)	N Stand-alone (4 Relay Panel is neither a Master or Secondary Panel) M Master (Available in CX08) S Secondary (Available in CX08)	Blank Standard Product T TAA

Example: CX162S00SPM or CX242S243LM

CATALOG # _____

CX	Spaces	Input Voltage	S Enclosure	Relay Quantity	Relay Type	Options	TAA
Model							
CX CX Lighting Control Panel	16 16 Relay Spaces 24 24 Relay Spaces	2 120-277VAC 3 347-480VAC	S NEMA 1 Enclosure	00 No relays included (Required SP Relay Type) 16 16 Relays Installed (Fully Populated) 24 24 Relays Installed (Fully Populated)	SP CX Lighting Control Panel 2N 1-Pole Elect. Held N.O. Relays (CXR2N) 3L 1-Pole Latching Relays (CXR3L) TN 2-Pole Elect. Held N.O. Relays (CXRTN)	M Master (Available in CX16 or CX24) S Secondary (Available in CX16 or CX24)	Blank Standard Product T TAA

Notes:

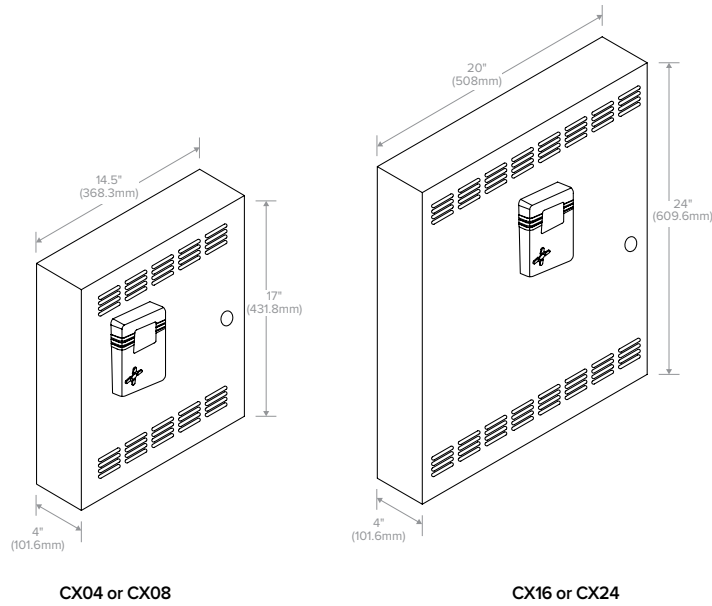
- 2-Pole relays take the same amount of space as 1-Pole relays.
- Installed relays must be all of the same type. Relay Type CXR3LEM* and CXRTC* are not available in fully populate panels and must be ordered separately to be installed in the field.
- "00" option has no relays, any purchase relays must be installed in the field.
- Secondary panels have a pre-installed Secondary Interface Card and separately packaged Master Interface Card. Join panels with a Cat5e/6 cable, T568B wiring scheme (Not to exceed 750').
- CX04 Relay panel is Stand Alone only. Does not function with Master/Satellite Interface cards.

*Buy American Solutions
TAA FAR §52.225-11
CX042S043LM
CX082S083LM
CX083S083LM
CX162S163LM
CX242S243LM

CX LIGHTING CONTROL PANELS

CX COMMERCIAL LIGHTING CONTROL PANELS

DIMENSIONS

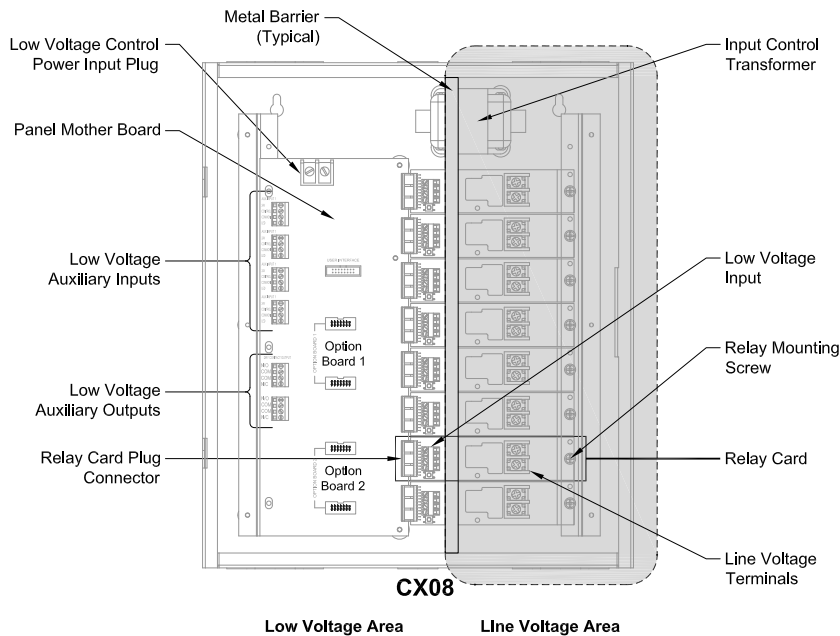


CX04 or CX08

CX16 or CX24

ADDITIONAL INFORMATION

Panel Interiors



CX08

Low Voltage Area

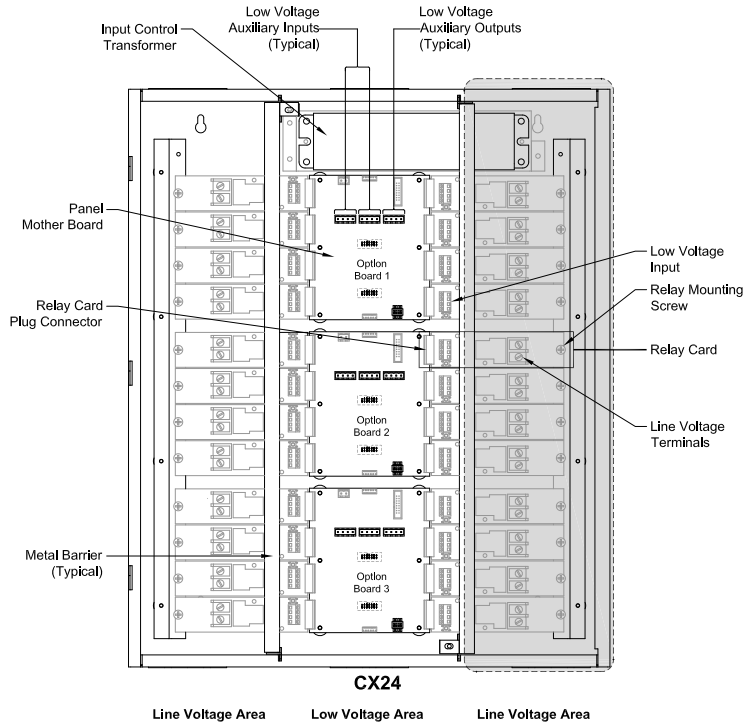
Line Voltage Area

CX LIGHTING CONTROL PANELS

CX COMMERCIAL LIGHTING CONTROL PANELS

ADDITIONAL INFORMATION (CONTINUED)

Panel Interiors



Accessory Parts List

CX Relays		
Model	Relay Type	
CXR	2N	1-Pole, Elect. Held N.O. 20A@120VAC-Tungsten; 16A @ 277VAC-Elect. Ballast; 20A @277VAC-Mag. Ballast; 14K SCCR @277VAC
	3L	1-Pole Latching 20A @120VAC-Tungsten; 16A @120/277VAC-Elect. Ballast; 30A @120/277VAC-Mag. Ballast; 20A @347VAC-Elect. Ballast; 18K SCCR @347VAC
	3LEM*	1-Pole, Latching 20A @120VAC-Tungsten; 16A @120/277VAC-Elect. Ballast; 30A @120/277VAC-Mag. Ballast; 20A @347VAC-Elect. Ballast; 20A @347VAC-Mag. Ballast; 5K SCCR @347VAC
	TN	2-Pole, Elect. Held N.O. 20A @208/240/480VAC Mag. Ballast; 14K SCCR @480VAC
	TC*	2-Pole, Elect. Held N.O. 20A @208/240/480VAC Mag. Ballast; 14K SCCR @480VAC

Optional 010V Dimming Interface Card

Model	Description
CXDIMCONTRBD	CX Panel 8-Channel dimming Interface board 0-10V Dimming 30mA, sinking current. 4-RJ45 ports for CXSW wall stations.
	CX04 and CX08 Panels only capable of supporting a single Dimming card (No more than 4 total CXDIMCONTRBD can be used with any Master/Secondary configurations; slots provided)

Optional Master/Satellite Interface Cards

Model	Description
CXKITSECINTFC	Master/Satellite Interface Card Replacement Kit (2card set)

© All product and company names, logos and product identifiers are trademarks ™ or registered trademarks ® of Hubbell Lighting, Inc. or their respective owners. Use of them does not necessarily imply any affiliation with or endorsement by such respective owners.