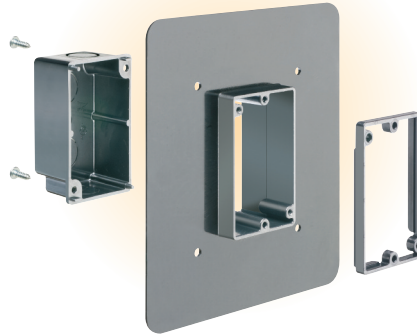


Non-metallic FR Series Device & Fixture Boxes

NEW!
more on
reverse

For a Variety of Exterior Wall Thicknesses • Extra-wide Flanges



**Ships ready for 1-3/8" finish thickness
Converts for up to 1-7/8"...FAST!**



Designed for new construction, Arlington's non-metallic FR series device and fixture boxes have interchangeable backs and extension rings that allow *one* box to work with almost any exterior wall finish thickness. Get everything you need – and more, without buying extra pieces separately. *That's* flexibility!

FR101F for devices, and the FR420F and FR405F pan box for fixtures, ship pre-assembled and ready for installations with 1-3/8" finish thicknesses.

Altering the FR101F or FR420F boxes for 5/8" or 7/8" finish thicknesses is easy! Remove the *back* and re-install it on the *opposite* side of the box for the 5/8" depth (add extension ring for 7/8").

Our pan box (FR405F) mounts directly to a flat surface, with no need to cut a large hole in the substrate. Changing the finish thickness dimension is accomplished by adding or removing the desired extension ring(s) – *without removing the back*.

- Wide flanges – no need for gaskets
- Prevents water and air intrusion between flange and substrate – no caulking required
- Non-corrosive, non-conductive – compatible with most building material surfaces
- UL Listed

**All ship
pre-assembled
for 1-3/8"
wall finish
thickness**



FR101F
for Devices



FR420F
for Fixtures



FR405F
Pan Box for Fixtures



1 Stauffer Industrial Park
Scranton, PA 18517
800/233.4717
Fax 570/562.0646
www.aifittings.com

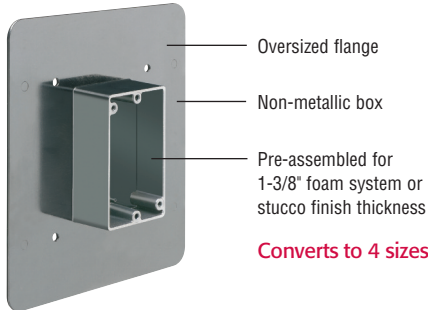
Patent pending

FR Series Non-metallic Boxes

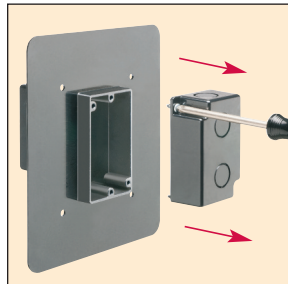


Install Device or Fixture on Variety of Wall Finish Thicknesses

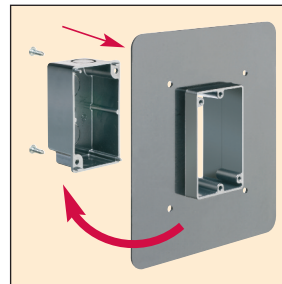
FOR INSTALLATION FR101F Device Box (or FR420F Fixture Box)



Converts to 4 sizes!



1 For 5/8" wall finish thickness, loosen two screws and remove the back.



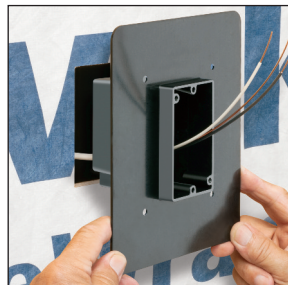
2 Re-install the back on the OPPOSITE side of the box.



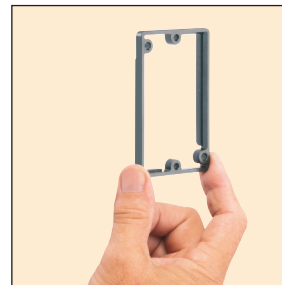
3 Assembled for 5/8" finish thickness.



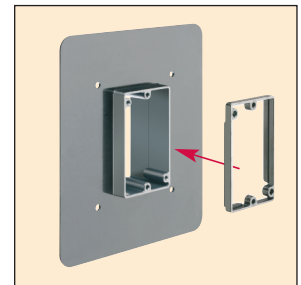
FR420F for Fixtures



4 Install supplied NM94 cable connector and NM900 plug as needed. Pull wire. Install box.



4 For 7/8" wall finish thickness, install the 1/4" extension ring...



5 ...to the front of the box.



Pre-assembled FR405F Pan Box 1-3/8"

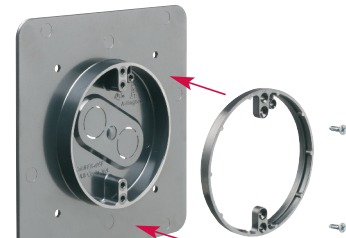
* Stationary back (no removal)



Remove 3/4" extension ring for 5/8" finish thickness



Set for 5/8" finish thickness



Add 1/4" extension ring for 7/8" finish thickness



Arlington

1 Stauffer Industrial Park
Scranton, PA 18517
800/233.4717
Fax 570/562.0646
www.aifittings.com

CATALOG NUMBER	UPC/DCI/NAED MFG #01 8997	APPLICATION	AS SHIPPED (1-3/8" finish)	PLUS 1/4" (1-5/8" finish)	UNIT/STD PKG
FR101F	12680	Device Box	21.8 cu. in.	23.8 cu. in.	10
FR420F	09615	Fixture box	19.5 cu. in.	22.0 cu. in.	10
			(for 1-3/8" finish)	(for 7/8" finish)	(for 5/8" finish)
FR405F	12681	Pan Box	12.8 cu. in.	7.3 cu. in.	4.8 cu. in.

FR101F and FR420F include...Flanged box for device or fixture, back panel, 1/4" extension ring, (4) #8 x 1/2" sheet metal screws, one each: NM94 connector and NM900 plug.

FR405F includes...Flanged pan box for fixture, one each: 1/4" and 3/4" extension rings, (2) #8 x 1/2" screws, (2) #8 x 1-1/4" screws, one each: NM94 connector and NM900 plug.

Patents pending
FR Boxes 0612/25M

Distributed by